



Connect 2024



Prices: All prices are F.O.B. the factory. Prices and specifications are subject to change without notice. Prices do not include applicable taxes, special handling or installation charges. Possession of a price list is not an offer to or agreement to sell. We reserve the right to change prices without notice. We are not responsible for typographical errors. In the event a price or description is found to be incorrect, the correct information will be communicated to you when the order is received.

Credit Terms: Open account status is only granted after a completed credit application is received and approved.

Payment Terms: Terms for open account are net 30 days. Terms for orders without open account will be determined by Mediatechnologies LLC on an order-by-order basis and may require prepayment or a 50% deposit with order and the balance prepaid before shipment.

Orders: Orders must be in writing. Faxed orders are acceptable. Processing of orders will not begin until a signed acknowledgement is received.

Acknowledgements: Orders are accepted, manufactured and invoiced based on written acknowledgements issued by Mediatechnologies LLC. All orders are considered correct as acknowledged. Notify Mediatechnologies LLC immediately of any order discrepancies. Acknowledged orders may not be changed or cancelled without written consent from Mediatechnologies LLC.

Changes to orders: Changes to orders already in process may be subject to a fee covering the cost to make the requested change. If a fee is necessary a written authorization of acceptance will be required. All requests for changes are subject to approval by Mediatechnologies LLC.

Cancellation of orders: All orders received by Mediatechnologies LLC are considered firm and cannot be cancelled without our approval. A cancellation fee may be required based upon cost incurred by Mediatechnologies LLC prior to receipt of a cancellation request.

Returns: Returns are not accepted without a Return Goods Authorization issued by Mediatechnologies LLC. Unauthorized returns will not be accepted. Returns may be subject to a restocking fee.

Shipping Terms: All orders will be shipped F.O.B. shipping point with freight charged collect. Shipping weights listed are net.

Routing: Shipments will be routed "best way" or as specified. Instructions will be followed as closely as possible, however, Mediatechnologies LLC reserves the right to make changes due to local conditions or other circumstances.

Freight Damage: Legal title to merchandise passes to the buyer upon acceptance by the carrier. All cartons must be carefully inspected at the time of delivery. Visible damage should be noted on the delivery receipt. In the case of concealed damage, the carrier must be notified within (5) days. It is the buyer's obligation to seek recourse against the shipper.

Shortages: Shipments should be inspected upon receipt for shortages. Shortages must be reported to Mediatechnologies LLC in writing within (5) days of receipt.

Shipping Address:

Mediatechnologies
892 Industrial Park Drive
Shelby, MI 49455

Warranty: All items manufactured by Mediatechnologies LLC, home of Mediatechnologies® and Benchmark™ library furniture, are guaranteed against defects for a period of five (5) years from the date of purchase.

We will repair or replace, in our discretion, any defective item without cost to our customer. This is customer's sole and exclusive remedy against us. No delay in shipment or delivery shall give rise to any liability for damages whatsoever. We are not liable for defects caused by customer or any third party. Customer is not authorized to make any repairs whatsoever or to deduct any amount from the purchase price. In no event shall our liability under this warranty exceed the purchase price. In no event shall we be liable for incidental, special or consequential damages. We disclaim all other warranties, express or implied, as to any matter whatsoever, including without limitation, quality, design, performance, specifications, samples, condition, merchantability and fitness for any particular purpose. No action may be commenced for breach of the warranty more than six months after the cause of action accrues and any such action may only be brought in the county of Oceana, State of Michigan.



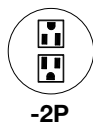
POWERSPOT



-1P1UC

PowerSpot	In surface, Round, Flush-mount, 2.5" diameter cutout required	
Model Number	Description	List Price
APSP-1P1UC-72-B	1 AC, 1 USB-A & 1 USB-C, Black, 6 ft cord	\$219
APSP-1P1UC-72-W	1 AC, 1 USB-A & 1 USB-C, White, 6 ft cord	\$219
APSP-1P1UC-72-N	1 AC, 1 USB-A & 1 USB-C, Nickel, 6 ft cord	\$219
APSP-1P1UC-120-B	1 AC, 1 USB-A & 1 USB-C, Black, 10 ft cord	\$252
APSP-1P1UC-120-W	1 AC, 1 USB-A & 1 USB-C, White, 10 ft cord	\$252
APSP-1P1UC-120-N	1 AC, 1 USB-A & 1 USB-C, Nickel, 10 ft cord	\$252

PORT



-2P



-1P1UC

PORT	In-surface, Round, Flush-mount (3" dia. cutout)	
Model Number	Description	List Price
APRT-2P-72-B	2 AC receptacles, 72" cord, Black finish	\$245
APRT-2P-72-W	2 AC receptacles, 72" cord, White finish	\$245
APRT-2P-72-S	3 AC receptacles, 72" cord, Silver finish	\$245
APRT-2P-120-B	2 AC receptacles, 120" cord, Black finish	\$249
APRT-2P-120-W	2 AC receptacles, 120" cord, White finish	\$249
APRT-2P-120-S	2 AC receptacles, 120" cord, Silver finish	\$249
APRT-1P1UC-72-B	1 AC receptacle, 1 USB Port & 1 USB-C Port, 72" cord, Black finish	\$302
APRT-1P1UC-72-W	1 AC receptacle, 1 USB Port & 1 USB-C Port, 72" cord, White finish	\$302
APRT-1P1UC-72-S	1 AC receptacle, 1 USB Port & 1 USB-C Port, 72" cord, Silver finish	\$302
APRT-1P1UC-120-B	1 AC receptacle, 1 USB Port & 1 USB-C Port, 120" cord, Black finish	\$410
APRT-1P1UC-120-W	1 AC receptacle, 1 USB Port & 1 USB-C Port, 120" cord, White finish	\$410
APRT-1P1UC-120-S	1 AC receptacle, 1 USB Port & 1 USB-C Port, 120" cord, Silver finish	\$410

ENSEMBLE



-2P1UC

Ensemble	In-surface, rectangular panel, Flush-Mount, 2" x 5.25" cutout, rear flange mount	
Model Number	Description	List Price
AEMB-2P1UC-72-B	2 AC, 1 USB-A & 1 USB-C port, Black, 6 ft cord	\$280
AEMB-2P1UC-72-W	2 AC, 1 USB-A & 1 USB-C port, White, 6 ft cord	\$280
AEMB-2P1UC-72-N	2 AC, 1 USB-A & 1 USB-C port, Nickel, 6 ft cord	\$302
AEMB-2P1UC-120-B	2 AC, 1 USB-A & 1 USB-C port, Black, 10 ft cord	\$327
AEMB-2P1UC-120-W	2 AC, 1 USB-A & 1 USB-C port, White, 10 ft cord	\$327
AEMB-2P1UC-120-N	2 AC, 1 USB-A & 1 USB-C port, Nickel, 10 ft cord	\$343



AZTECH



-2P1UC10

AZTECH In-surface, rectangular panel, Flush-mount (2" x 6.75" cutout)		
Model Number	Description	List Price
AZ-2P1UC10-72-BA	2 AC receptacles, 1 USB-A & 1 USB-C port, 1 Open port, 72" cord, Black Plate, Silver anodized housing	\$535
AZ-2P1UC10-72-W	2 AC receptacles, 1 USB-A & 1 USB-C port, 1 Open port, 72" cord, White Plate	\$535
AZ-2P1UC10-72-S	2 AC receptacles, 1 USB-A & 1 USB-C port, 1 Open port, 72" cord, Silver Plate	\$535
AZ-2P1UC10-120-BA	2 AC receptacles, 1 USB-A & 1 USB-C port, 1 Open port, 120" cord, Black Plate, Silver anodized housing	\$545
AZ-2P1UC10-120-W	2 AC receptacles, 1 USB-A & 1 USB-C port, 1 Open port, 120" cord, White Plate	\$545
AZ-2P1UC10-120-S	2 AC receptacles, 1 USB-A & 1 USB-C port, 1 Open port, 120" cord, Silver Plate	\$545
In-surface, rectangular panel, Upholstery-mount (2" x 6.75" cutout)		
FTAZ-2P1UC10-72-BA	2 AC receptacles, 1 USB-A & 1 USB-C port, 1 Open port, 72" cord, Black Plate, Silver anodized housing	\$547
FTAZ-2P1UC10-72-W	2 AC receptacles, 1 USB-A & 1 USB-C port, 1 Open port, 72" cord, White Plate	\$547
FTAZ-2P1UC10-72-S	2 AC receptacles, 1 USB-A & 1 USB-C port, 1 Open port, 72" cord, Silver Plate	\$547
FTAZ-2P1UC10-120-BA	2 AC receptacles, 1 USB-A & 1 USB-C port, 1 Open port, 120" cord, Black Plate, Silver anodized housing	\$573
FTAZ-2P1UC10-120-W	2 AC receptacles, 1 USB-A & 1 USB-C port, 1 Open port, 120" cord, White Plate	\$573
FTAZ-2P1UC10-120-S	2 AC receptacles, 1 USB-A & 1 USB-C port, 1 Open port, 120" cord, Silver Plate	\$573

JOLT



-4P



-2P1UC10

JOLT In-surface, Cube (3" dia. cutout)		
Model Number	Description	List Price
AJLT-4P-72-B	4 AC receptacles, 72" cord, Black finish	\$382
AJLT-4P-72-W	4 AC receptacles, 72" cord, White finish	\$382
AJLT-4P-120-B	4 AC receptacles, 120" cord, Black finish	\$389
AJLT-4P-120-W	4 AC receptacles, 120" cord, White finish	\$389
AJLT-2P1UC10-72-B	2 AC receptacles, 1 USB-A & 1 USB-C port, 1 Open port, 72" cord, Black finish	\$563
AJLT-2P1UC10-72-W	2 AC receptacles, 1 USB-A & 1 USB-C port, 1 Open port, 72" cord, White finish	\$563
AJLT-2P1UC10-120-B	2 AC receptacles, 1 USB-A & 1 USB-C port, 1 Open port, 120" cord, Black finish	\$574
AJLT-2P1UC10-120-W	2 AC receptacles, 1 USB-A & 1 USB-C port, 1 Open port, 120" cord, White finish	\$574

DUET



-1P2U

DUET In-surface, rectangular panel, Upholstery, Face-mount (2" x 3.25" cutout, 3.75" between mounting holes)		
Model Number	Description	List Price
ADUF-1P1UC-72-B	1 AC receptacle, 1 USB-A & 1 USB-C port, 72" cord, Black Plate	\$384
ADUF-1P1UC-72-S	1 AC receptacle, 1 USB-A & 1 USB-C port, 72" cord, Silver Powdercoat Plate	\$384
ADUF-1P1UC-72-W	1 AC receptacle, 1 USB-A & 1 USB-C port, 72" cord, White Plate	\$384
ADUF-1P1UC-120-B	1 AC receptacle, 1 USB-A & 1 USB-C port, 120" cord, Black Plate	\$392
ADUF-1P1UC-120-S	1 AC receptacle, 1 USB-A & 1 USB-C port, 120" cord, Silver Powdercoat Plate	\$392
ADUF-1P1UC-120-W	1 AC receptacle, 1 USB-A & 1 USB-C port, 120" cord, White Plate	\$392

TREO



-2P1UC

TREO In-surface, rectangular panel		
Model Number	Description	List Price
TRO-2P1UC-72-B	2 AC receptacles, 1 USB Port, 1 USB-C Port, 72" cord, Black finish	\$593
TRO-2P1UC-72-ST	2 AC receptacles, 1 USB Port, 1 USB-C Port, 72" cord, Storm finish	\$593
TRO-2P1UC-120-B	2 AC receptacles, 1 USB Port, 1 USB-C Port, 120" cord, Black finish	\$604
TRO-2P1UC-120-ST	2 AC receptacles, 1 USB Port, 1 USB-C Port, 120" cord, Storm finish	\$604

* The -4P models require a large plug with an integrated circuit breaker that will NOT pass through a table leg.



BACKSTOP



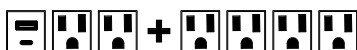
-2P2U



-3P2U

BACKSTOP		On-surface mount
Model Number	Description	List Price
ABTP-2P2U-72-B	Backstop, 2 AC, 2 USB-A ports, Black, 6ft cord	\$196
ABTP-2P2U-72-W	Backstop, 2 AC, 2 USB-A ports, White, 6ft cord	\$196
ABTP-3P2U-72-B	Backstop, 3 AC, 2 USB-A ports, Black, 6ft cord	\$272
ABTP-3P2U-72-W	Backstop, 3 AC, 2 USB-A ports, White, 6ft cord	\$272

STANDLEY



-2P1UC/4P

STANDLEY		On-surface desktop power center, and below-surface mount plug-in outlet center, for sit to stand tables/desks
Model Number	Description	List Price
STND-2P1UC/4P-72-B	Standley, 2 AC, 1 USB-A, 1 USB-C above surface, 4 AC below surface, 72" coil cord, Black finish	\$889
STND-2P1UC/4P-72-W	Standley, 2 AC, 1 USB-A, 1 USB-C above surface, 4 AC below surface, 72" coil cord, White finish	\$889

GROVER



-2P2UC

GROVER		Free-standing connectivity tower
Model Number	Description	List Price
AGRV-2P2UC-B-96	Grover, 3'H, 2 AC, 2 USB-A & 1 USB-C ports, 1 Open port, 96" retracting cord, Black finish	\$1,422
AGRV-2P2UC-W-96	Grover, 3'H, 2 AC, 2 USB-A & 1 USB-C ports, 1 Open port, 96" retracting cord, White finish	\$1,422

CHARGE UP DUAL



-4P2UC20

CHARGE UP DUAL		In-surface, Rectangular, Dual Flip-up (7.69" x 8" cutout)
Model Number	Description	List Price
AMX-4P2UC20-72-BABT	4 AC receptacles, 2 USB-A & USB-C Ports, 2 Open Ports, 72" cord, Black Anodized finish, Black Trim	\$1,371
AMX-4P2UC20-72-SAWT	4 AC receptacles, 2 USB-A & USB-C Ports, 2 Open Ports, 72" cord, Silver Anodized finish, White Trim	\$1,371
AMX-4P2UC20-120-BABT	4 AC receptacles, 2 USB-A & USB-C Ports, 2 Open Ports, 120" cord, Black Anodized finish, Black Trim	\$1,385
AMX-4P2UC20-120-SAWT	4 AC receptacles, 2 USB-A & USB-C Ports, 2 Open Ports, 120" cord, Silver Anodized finish, White Trim	\$1,385



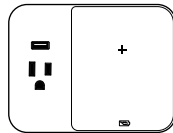
ENVOY



-2P2U

ENVOY		In-surface, rectangular box with flip-up panel, Flush-mount, 4.125" x 5" cutout required
Model Number	Description	List Price
AENV-2P2U-72-B	Envoy, 1 duplex outlet, 2 USB-A ports, Black, 6 ft cord	\$667
AENV-2P2U-72-SS	Envoy, 1 duplex outlet, 2 USB-A ports, Stainless Steel, 6 ft cord	\$667

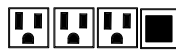
SPARKY



-1P1U1WCS

SPARKY		On-surface, rectangular flat surface, table-top grommet-cutout-mount
Model Number	Description	List Price
SPK-1P1U1WCS-72-B	5W Qi charging surface, 1 AC receptacle, 1 USB Port, 72" cord, Black gloss plastic	\$453
SPK-1P1U1WCS-72-W	5W Qi charging surface, 1 AC receptacle, 1 USB Port, 72" cord, White gloss plastic	\$453
SPK-1P1U1WCS-120-B	5W Qi charging surface, 1 AC receptacle, 1 USB Port, 120" cord, Black gloss plastic	\$460
SPK-1P1U1WCS-120-W	5W Qi charging surface, 1 AC receptacle, 1 USB Port, 120" cord, White gloss plastic	\$460

CHARGE UP



-3P1UC



-3P1O

CHARGE UP		In-surface, Rectangular, Single Flip-up (3" x 6.9375" cutout)
Model Number	Description	List Price
ACUS-3P1UC-72-B	3 AC receptacles, 1 USB-A & USB-C port, 72" cord, Black finish	\$513
ACUS-3P1UC-72-W	3 AC receptacles, 1 USB-A & USB-C port, 72" cord, White finish	\$513
ACUS-3P1UC-120-B	3 AC receptacles, 1 USB-A & USB-C port, 120" cord, Black finish	\$526
ACUS-3P1UC-120-W	3 AC receptacles, 1 USB-A & USB-C port, 120" cord, White finish	\$526
ACUS-3P1O-72-B	3 AC receptacles, 1 Open Port, 72" cord, Black finish	\$366
ACUS-3P1O-72-W	3 AC receptacles, 1 Open Port, 72" cord, White finish	\$366
ACUS-3P1O-120-B	3 AC receptacles, 1 Open Port, 120" cord, Black finish	\$379
ACUS-3P1O-120-W	3 AC receptacles, 1 Open Port, 120" cord, White finish	\$379

MINI CHARGE UP



-2P



-1U2C1P

MINI CHARGE UP		In-surface, Rectangular, Single Flip-up (3" x 4.5" cutout)
Model Number	Description	List Price
ACUM-2P-72-W	2 AC receptacles, 72" cord, White finish	\$305
ACUM-2P-72-B	2 AC receptacles, 72" cord, Black finish	\$305
ACUM-2P-120-W	2 AC receptacles, 120" cord, White finish	\$319
ACUM-2P-120-B	2 AC receptacles, 120" cord, Black finish	\$319
ACUM-1U2C1P-72-W	1 USB-A, 2 USB-C, 1 AC receptacle, 72" cord, White finish	\$478
ACUM-1U2C1P-72-B	1 USB-A, 2 USB-C, 1 AC receptacle, 72" cord, Black finish	\$478
ACUM-1U2C1P-120-W	1 USB-A, 2 USB-C, 1 AC receptacle, 120" cord, White finish	\$491
ACUM-1U2C1P-120-B	1 USB-A, 2 USB-C, 1 AC receptacle, 120" cord, Black finish	\$491

TRACKSTAR



-2P

TRACK STAR		
Model Number	Description	List Price
TSTR-2P4D-72-B	2 AC receptacle, 4 Data ports, Low profile ramps, wireway length 72", 108" cord	\$1,690
TSTR-2P4D-120-B	3 AC receptacle, 4 Data ports, Low profile ramps, wireway length 144", 180" cord.	\$2,831

P-CONNECT-240114



HEAVY DUTY OUTLET CENTER



-6P

HEAVY DUTY OUTLET CENTER

Model Number	Description	List Price
HDPC-6P	6 AC receptacles, Power Distribution Strip, Switchable, 72" cord, Aluminum housing ,Silver finish	\$237

P6 POWER STRIP



-6P

PLASTIC PLUG-IN OUTLET CENTER

PPOC-4P1UC	4 AC receptables, 1 USB, 1 USB-C, Power Distribution Strip, Switchable, White plastic housing, 72" cord	\$192
------------	---	-------

PLASTIC PLUG-IN OUTLET CENTER



-4P1UC

P6 POWER STRIP

P6PS-6P	6 AC receptacles, Power Distribution Strip, Switchable, White Plastic Housing, 72" cord	\$66
---------	---	------

MODULINK



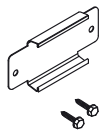
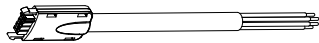
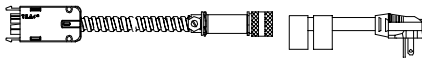
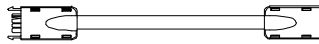
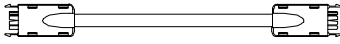
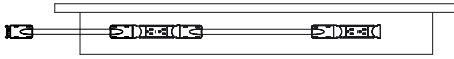
-3P1UC

MODULINK

Model Number	Description	List Price
MDS-3P1UC	3 AC receptacles, 1 USB-A & USB-C port, Single circuit modular power distribution system, Starter Unit, White plastic housing, 120" Power cord, linking cord.	\$440
MDE-3P1UC	3 AC receptacles, 1 USB-A & USB-C port, Single circuit modular power distribution system, Feed-thru extension unit, White plastic housing, 2 linking cords.	\$415
MDT-3P1UC	3 AC receptacles, 1 USB-A & USB-C port, Single circuit modular power distribution system, Terminating unit, White plastic housing, 1 linking cord.	\$363



MODTRAK 4



MODTRAK4

Model Number	Description	List Price
KITS		
MT-4T-36	Kit, for 36" Table, 2 Duplex Receptacles	\$288
MT-4T-48	Kit, for 48" Table, 2 Duplex Receptacles	\$298
MT-4T-60	Kit, for 60" Table, 2 Duplex Receptacles	\$312
MT-4T-72	Kit, for 72" Table, 2 Duplex Receptacles	\$324

M-M JUMPER

JMM-9	9" Male to Male Jumper Cable, 4-track wiring system,	\$82
JMM-12	12" Male to Male Jumper Cable, 4-track wiring system,	\$84
JMM-18	18" Male to Male Jumper Cable, 4-track wiring system,	\$88
JMM-22	22" Male to Male Jumper Cable, 4-track wiring system,	\$91
JMM-24	24" Male to Male Jumper Cable, 4-track wiring system,	\$93
JMM-30	30" Male to Male Jumper Cable, 4-track wiring system,	\$96
JMM-36	36" Male to Male Jumper Cable, 4-track wiring system,	\$102
JMM-42	42" Male to Male Jumper Cable, 4-track wiring system,	\$105
JMM-48	48" Male to Male Jumper Cable, 4-track wiring system,	\$120

M-F JUMPER

JMF-9	9" Male to Female Jumper Cable, 4-track wiring system,	\$71
JMF-12	12" Male to Female Jumper Cable, 4-track wiring system,	\$82
JMF-18	18" Male to Female Jumper Cable, 4-track wiring system,	\$86
JMF-22	22" Male to Female Jumper Cable, 4-track wiring system,	\$88
JMF-24	24" Male to Female Jumper Cable, 4-track wiring system,	\$91
JMF-30	30" Male to Female Jumper Cable, 4-track wiring system,	\$94
JMF-36	36" Male to Female Jumper Cable, 4-track wiring system,	\$102
JMF-42	42" Male to Female Jumper Cable, 4-track wiring system,	\$109
JMF-48	48" Male to Female Jumper Cable, 4-track wiring system,	\$117

SINGLE CIRCUIT POWER ENTRY

SCPE-72	Single-Circuit Power Entry, 20 AMP, 72"	\$285
---------	---	-------

2-CIRCUIT POWER ENTRY

MT-4T-MLPE-72	2-Circuit Power Entry, 72"	\$173
---------------	----------------------------	-------

MOUNTING BRACKET

MT-4C-MBK	Mounting Bracket, 4-track wiring system	\$12
-----------	---	------

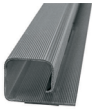


GROMMETS



GROMMETS		
Model Number	Description	List Price
A25GD	Grommet, Round, 50mm, Black, Installed, used for vertical applications	\$48
A25GD-W	Grommet, Round, 50mm, White, Installed, used for vertical applications	\$48
A25GDU	Grommet, Round, 50mm, Black, Uninstalled, used for vertical applications	\$18
A25GDU-W	Grommet, Round, 50mm, White, Uninstalled, used for vertical applications	\$18
A20G	Grommet, Round, 50mm, Black, Installed	\$47
A20GU	Grommet, Round, 50mm, Black, Uninstalled	\$16
A30G	Grommet, Round, 80mm, Black, Installed	\$47
A30GU	Grommet, Round, 80mm, Black, Uninstalled	\$16

CABLE CHANNEL



CABLE CHANNEL		
Model Number	Description	List Price
AWM48	Wire Management Channel, PVC, 2.5"W x 1.5"H x 48"L	\$69

CABLE CLIP



CABLE CLIP		
Model Number	Description	List Price
AC-2DG	Round Leg Cable Clip, 2" dia., Graphite Color	\$20

CABLE GRIP



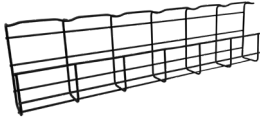
CABLE GRIP		
Model Number	Description	List Price
ACG-5B	2.5"W x 5.375"L, Black Color	\$18

INCOGNEATO



VERTICAL CABLE MANAGEMENT (INCOGNEATO)		
Model Number	Description	List Price
AVM32-VERTS2	Split Cable Loom, 2.75" I.D., Max Height 70", Silver finish	\$206

CORD STORAGE BASKET



CORD STORAGE BASKET

Model Number	Description	List Price
CSB24-B	Carbon Steel basket cable management tray, Black finish	\$146

CPU HOLDERS



CPU HOLDERS

Model Number	Description	List Price
ACPU-CS-10	Stationary Bracket, Adjustable CPU Holder, 5.25" - 9.25"W x 15.375" - 21"H	\$187
ACPU-CS-11	Rotating Bracket, Adjustable CPU Holder, 5.25" - 9.25"W x 15.375" - 21"H	\$230

KEYBOARD TRAY



KEYBOARD TRAY

Model Number	Description	List Price
AAKT003	Articulating Keyboard Mechanism with Mouse Tray, 30"W x 20"D, Adjustable Height	\$422

BAG HOOK



BAG HOOK

Model Number	Description	List Price
BPH	Metal Bag Hook	\$19