

# Modular Circulations Desks

## General Specifications - Circulation Desks

**Modular Case System:** Each case module is fully assembled, allowing for simple field assembly of the complete circulation desk as well as for easy reconfiguration, if necessary. Cases connect with male/female threaded metal connectors.

**Top:** Tops are 1-1/4" thick, three ply engineered wood construction with .050" High pressure laminate, HPL, and a phenolic backer sheet. The patron side is edged with 5/16" x 1-1/4" solid red oak (with the exception on the Malibu and Keystone design have 1-5/8") with a 1/4" radius top and bottom. The edges and back side of the top are edged with 1/8" solid red oak.

**Case Construction:** Circulation desk modules are constructed of 3/4" thick, three ply particleboard with plain sliced "A" grade oak veneer. All modules, except Malibu style, utilize a continuous front design (sides do not penetrate), with a 4" High recessed toe. Cabinets are assembled using glue and dowel joinery. Note: One Terminating End Panel is required for each exposed end of a complete desk assembly.

**Adjustable Shelves:** Adjustable shelves are 3/4" thick three ply particleboard plywood with "A" grade oak veneer faces. The exposed edges are edged with 1/8" solid red oak. Shelves are adjustable on 32mm increments.

**Drawers:** Drawers are constructed of 1/2" nine ply baltic birch plywood. Drawers have 3/4" thick fronts with "A" grade oak veneer. Box drawers have 100 lb. full extension slides, file drawers have 100 lb. full extension slides.

**Doors:** Doors are constructed of 3/4" thick, three ply particleboard with plain sliced "A" grade oak veneer faces and edged on all sides with 1/8" solid red oak. Door hardware includes concealed hinges, fully adjustable in all 3 axes, and wire pulls.

**Continuous Top Construction:** Tops may be specified as continuous.

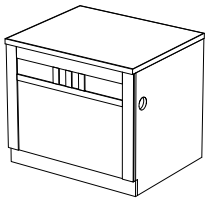
**Locks:** Units may be specified with doors and or drawers locking, keyed random or alike.

**Design Lines:** mediatechnologies® offers seven design lines of circulation desk modules, all using the general construction specifications above.

To specify a design line you must include a letter indicator: No letter indicator will specify our standard Bookmark design.

**M**-Metro      **L**-Lexington      **H**-Heritage      **MB**-Malibu  
**CL**-Charleston      **KS**-Keystone

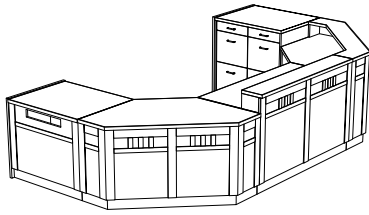
Please see below for design descriptions



**Charleston:** combining the mission detail and stile design for a modern twist on a classic style. Applied to the patron side of most modular units. Model Number example for Charleston Desk unit; MCD-CL-36D-29

# Charleston

## Circulation Desks



Desk Units				
36" Wide	Model Number	Description	Wgt.	List Price
	MCD-CL-36D-29	Desk Unit, 36"W X 30"D X 29" H	116	\$2,624
	MCD-CL-36D-32	Desk Unit, 36"W X 30"D X 32" H	122	\$2,624
	MCD-CL-36D-39	Desk Unit, 36"W X 30"D X 39" H	137	\$2,786
	MCD-CL-36D-32-ADJ	Desk Unit, 36"W X 30"D X ADJ. H	122	\$2,858
48" Wide	Model Number	Description	Wgt.	List Price
	MCD-CL-48D-29	Desk Unit, 48"W X 30"D X 29" H	127	\$3,490
	MCD-CL-48D-32	Desk Unit, 48"W X 30"D X 32" H	134	\$3,490
	MCD-CL-48D-39	Desk Unit, 48"W X 30"D X 39" H	149	\$3,699
	MCD-CL-48D-32-ADJ	Desk Unit, 48"W X 30"D X ADJ. H	134	\$3,803
72" Wide	Model Number	Description	Wgt.	List Price
	MCD-CL-72D-29	Desk Unit, 72"W X 30"D X 29" H	201	\$5,328
	MCD-CL-72D-32	Desk Unit, 72"W X 30"D X 32" H	208	\$5,328
	MCD-CL-72D-39	Desk Unit, 72"W X 30"D X 39" H	226	\$5,352
	MCD-CL-72D-32-ADJ	Desk Unit, 72"W X 30"D X ADJ. H	208	\$5,562
Book Return	Model Number	Description	Wgt.	List Price
	MCD-CL-36BR-29	Book Return, 36"W X 30"D X 29" H	115	\$2,808
	MCD-CL-36BR-32	Book Return, 36"W X 30"D X 32" H	121	\$2,808
	MCD-CL-36BR-39	Book Return, 36"W X 30"D X 39" H	136	\$2,975
Descending Platform Book Truck	Model Number	Description	Wgt.	List Price
	MCD-DBT-1824-21	Depressible Platform Book Truck, 18"D x 24.25"W x 21"H, For curved 29"H Book Return Units and Nomad Book Return	135	\$3,107
	MCD-DBT-1824-24	Depressible Platform Book Truck, 18"D x 24.25"W x 24"H, For Curved 32"-39"H Book Return Units	135	\$3,107
	MCD-DBT-2424-21	Depressible Platform Book Truck, 23.625"D x 24.25"W x 21"H, For 29"H Book Return Units with Extended Chutes and 32"H Keystone and Malibu Book Returns	137	\$3,107
	MCD-DBT-2424-24	Depressible Platform Book Truck, 23.625"D x 24.25"W x 24"H, For 32" and 39"H Book Return Units	137	\$3,107
Top Surface Slot Book Return Module with Drawer and Shelf Storage	Model Number	Description	Wgt.	List Price
	MCD-CL-36SBR-TOP-29	Book Return w Top Slot, 36"W X 30"D X 29" H	198	\$4,061
	MCD-CL-36SBR-TOP-32	Book Return w Top Slot, 36"W X 30"D X 32" H	210	\$4,061
	MCD-CL-36SBR-TOP-39	Book Return w Top Slot, 36"W X 30"D X 39" H	215	\$4,096
Cupboard Units	Model Number	Description	Wgt.	List Price
	MCD-CL-36CS-29	Cupboard Unit, 36"W X 30"D X 29" H	187	\$3,980
	MCD-CL-36CS-32	Cupboard Unit, 36"W X 30"D X 32" H	190	\$3,980
	MCD-CL-36CS-39	Cupboard Unit, 36"W X 30"D X 39" H	208	\$4,020
Cupboard Unit With Drawer	Model Number	Description	Wgt.	List Price
	MCD-CL-36CD-29	Cupboard Unit, 36"W X 30"D X 29" H with drawer	199	\$4,578
	MCD-CL-36CD-32	Cupboard Unit, 36"W X 30"D X 32" H with drawer	205	\$4,578
	MCD-CL-36CD-39	Cupboard Unit, 36"W X 30"D X 39" H with drawer	223	\$4,612

Cupboard Unit With 2 & 3 Drawers (Cupboard Left)	Model Number	Description	Wgt.	List Price
	MCD-CL-36C2DL-29	Cupboard Unit, Left, 36"W X 30"D X 29" H with 2 drawers, file/file	220	\$5,874
	MCD-CL-36C2DL-32	Cupboard Unit, Left, 36"W X 30"D X 32" H with 2 drawers, file/file	223	\$5,874
	MCD-CL-36C3DL-32	Cupboard Unit, Left, 36"W X 30"D X 32" H with 3 drawers, box/box/file	228	\$6,071
	MCD-CL-36C3DL-39	Cupboard Unit, Left, 36"W X 30"D X 39" H with 3 drawers, box/file/file	254	\$6,123
Cupboard Unit With 2 & 3 Drawers (Cupboard Right)	Model Number	Description	Wgt.	List Price
	MCD-CL-36C2DR-29	Cupboard Unit, Right, 36"W X 30"D X 29" H with 2 drawers, file/file	220	\$5,874
	MCD-CL-36C2DR-32	Cupboard Unit, Right, 36"W X 30"D X 32" H with 2 drawers, file/file	223	\$5,874
	MCD-CL-36C3DR-32	Cupboard Unit, Right, 36"W X 30"D X 32" H with 3 drawers, box/box/file	228	\$6,071
	MCD-CL-36C3DR-39	Cupboard Unit, Right, 36"W X 30"D X 39" H with 3 drawers, box/file/file	254	\$6,123
Cupboard Unit With Open Storage (Cupboard Left)	Model Number	Description	Wgt.	List Price
	MCD-CL-36COSL-29	Cupboard Unit, Left, 36"W X 30"D X 29" H with open storage	184	\$4,172
	MCD-CL-36COSL-32	Cupboard Unit, Left, 36"W X 30"D X 32" H with open storage	188	\$4,172
	MCD-CL-36COSL-39	Cupboard Unit, Left, 36"W X 30"D X 39" H with open storage	202	\$4,223
Cupboard Unit With Open Storage (Cupboard Right)	Model Number	Description	Wgt.	List Price
	MCD-CL-36COSR-29	Cupboard Unit, Right, 36"W X 30"D X 29" H with open storage	184	\$4,172
	MCD-CL-36COSR-32	Cupboard Unit, Right, 36"W X 30"D X 32" H with open storage	188	\$4,172
	MCD-CL-36COSR-39	Cupboard Unit, Right, 36"W X 30"D X 39" H with open storage	202	\$4,223
Open Storage Units	Model Number	Description	Wgt.	List Price
	MCD-CL-36OS-29	Open Storage, 36"W X 30"D X 29" H	183	\$3,193
	MCD-CL-36OS-32	Open Storage, 36"W X 30"D X 32" H	186	\$3,193
	MCD-CL-36OS-39	Open Storage, 36"W X 30"D X 39" H	200	\$3,222
Open Storage Unit With Drawer	Model Number	Description	Wgt.	List Price
	MCD-CL-36OSD-29	Open Storage, 36"W X 30"D X 29" H with drawer	198	\$3,919
	MCD-CL-36OSD-32	Open Storage, 36"W X 30"D X 32" H with drawer	201	\$3,919
	MCD-CL-36OSD-39	Open Storage, 36"W X 30"D X 39" H with drawer	215	\$3,954
Open Storage Unit With 2 & 3 Drawers (Open Storage Left)	Model Number	Description	Wgt.	List Price
	MCD-CL-36OS2DL-29	Open Storage, Left, 36"W X 30"D X 29" H with 2 drawers, file/file	207	\$5,667
	MCD-CL-36OS2DL-32	Open Storage, Left, 36"W X 30"D X 32" H with 2 drawers, file/file	210	\$5,667
	MCD-CL-36OS3DL-32	Open Storage, Left, 36"W X 30"D X 32" H with 3 drawers, box/box/file	218	\$5,890
	MCD-CL-36OS3DL-39	Open Storage, Left, 36"W X 30"D X 39" H with 3 drawers, box/file/file	238	\$6,146

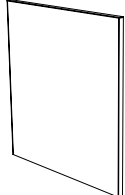
# Charleston

## Circulation Desks

Open Storage Unit With 2 & 3 Drawers (Open Storage Right)	Model Number	Description	Wgt.	List Price
	MCD-CL-360S2DR-29	Open Storage, Right, 36"W X 30"D X 29" H with 2 drawers, file/file	207	\$5,667
	MCD-CL-360S2DR-32	Open Storage, Right, 36"W X 30"D X 32" H with 2 drawers, file/file	210	\$5,667
	MCD-CL-360S3DR-32	Open Storage, Right, 36"W X 30"D X 32" H with 3 drawers, box/box/file	218	\$5,890
	MCD-CL-360S3DR-39	Open Storage, Right, 36"W X 30"D X 39" H with 3 drawers, box/file/file	238	\$6,146
Kneespace Unit	Model Number	Description	Wgt.	List Price
	MCD-CL-36KS-32	Kneespace Unit, 36"W X 30"D X 32" H	136	\$3,687
	MCD-CL-36KS-39	Kneespace Unit, 36"W X 30"D X 39" H	149	\$3,716
45 Degree Flat	Model Number	Description	Wgt.	List Price
	MCD-CL-30FC45-29	Flat Corner, 30"W X 30"D X 29" H	74	\$3,499
	MCD-CL-30FC45-32	Flat Corner, 30"W X 30"D X 32" H	77	\$3,499
	MCD-CL-30FC45-39	Flat Corner, 30"W X 30"D X 39" H	84	\$3,838
90 Degree Extended Flat	Model Number	Description	Wgt.	List Price
	MCD-CL-30EFC-29	Flat Ext. Corner, 66"W X 30"D X 29" H	164	\$7,453
	MCD-CL-30EFC-32	Flat Ext. Corner, 66"W X 30"D X 32" H	173	\$7,453
	MCD-CL-30EFC-39	Flat Ext. Corner, 66"W X 30"D X 39" H	190	\$7,660
90 Degree Square	Model Number	Description	Wgt.	List Price
	MCD-CL-30SC-29	Square Corner, 30"W X 30"D X 29"H	150	\$4,153
	MCD-CL-30SC-32	Square Corner, 30"W X 30"D X 32"H	155	\$4,153
	MCD-CL-30SC-39	Square Corner, 30"W X 30"D X 39"H	170	\$4,179
Triangle Corner Unit	Model Number	Description	Wgt.	List Price
	MCD-CL-30TC-29	Triangle Corner, 30"W X 30"D X 29" H	87	\$3,267
	MCD-CL-30TC-32	Triangle Corner, 30"W X 30"D X 32" H	89	\$3,267
	MCD-CL-30TC-39	Triangle Corner, 30"W X 30"D X 39" H	97	\$3,441

## Circulation Desk End Panels

Note: One Terminating End Panel is required for each exposed end of a complete desk assembly. End Panels are available in all standard design lines. Terminating end panels are available to create right or left facing units. Right side and left side is determined from the perspective of the desk user.



Charleston	Model Number	Description	Wgt.	Price
	MCD-CL-29EP-LH	Charleston Finished Left End Panel for 29"H Unit	19	\$763
	MCD-CL-29EP-RH	Charleston Finished Right End Panel for 29"H Unit	19	\$763
	MCD-CL-32EP-LH	Charleston Finished Left End Panel for 32"H Unit	20	\$763
	MCD-CL-32EP-RH	Charleston Finished Right End Panel for 32"H Unit	20	\$763
	MCD-CL-39EP-LH	Charleston Finished Left End Panel for 39"H Unit	24	\$871
	MCD-CL-39EP-RH	Charleston Finished Right End Panel for 39"H Unit	24	\$871

## Transactions Tops

Charleston	Model Number	Description	Wgt.	Price
	MCD-CL-36-TRX	Charleston Transaction Top 36"W X 7"H	18	\$805
	MCD-CL-72-TRX	Charleston Transaction Top 72"W X 7"H	32	\$1,533
	MCD-CL-30SC-TRX	Charleston Transaction Top 9"D X 7"H	18	\$1,909
	MCD-CL-30RC-TRX	Charleston Transaction Top 9"D X 7"H	16	\$1,909
	MCD-CL-30EFC-TRX	Charleston Transaction Top 9"D X 7"H	29	\$2,224
	MCD-CL-30ERC-TRX	Charleston Transaction Top 9"D X 7"H	25	\$2,510

### Set Up Charges and Upcharges for Non-Standard and Custom Finishes

Model Number	Description	List Price
Non-Standard PVC	Upcharge, per color, per order, for non-standard PVC	\$911
Custom Finish	Upcharge for custom stain finish	\$640
Non-Standard Stain	Upcharge for non-standard stains already matched	\$283
Sprayon Finish	Upcharge, per color, per order, for Sprayon finish	\$329
Non-Standard HPL	Upcharge for nonstandard HPL (applies to Bella and Romak only)	\$690