

RUBIX OPEN STORAGE

Storage



36" Open Storage (OS)



48" Open Storage (OS)



60" Open Storage (OS)



72" Open Storage (OS)

General Specifications

Non-Locking Cabinet: Are constructed with 3/4" thick engineered wood side panels, sub-tops, vertical dividers and shelves. Backs are constructed with 3/4" thick engineered wood. Cabinet finish material is thermally fused laminate (TFL) case and doors/drawers, with 3mm PVC edging. Worksurface tops receive a high-pressure laminate surface. Cabinets 72"H or taller do not receive a worksurface top. **Other materials available:*** High-pressure laminate (HPL) case and doors/drawers edges and wood veneer case and doors/drawers with wood edges available and will incur an upcharge.

Frame: Steel frame is 11 gauge 1-1/4" square steel tubing. Frame assembly is attached to cabinet using wood screws. Mobile units are standard, using 75mm twin wheel locking casters that attach via threaded inserts on underside of the steel frame assembly. *Note: 54"H & 72"H units receive 100mm casters.

* Freestanding steel support legs and mobile casters use the same threaded inserts and are interchangeable. Legs are available upon request for an upcharge.

* Locks are available for an upcharge.

Features of various cabinet configurations includes:

- Concealed door hinges and a variety of pulls available.

Finish: Standard powder coat on all metal parts is black; other colors may be specified. Visit our website for Finish and Color Guide for choices.

| 36" W Open Storage (OS) | | | |
|-------------------------|--------------------|------|------------|
| Model Number | Description | Wgt. | List Price |
| 18" Depth | | | |
| OS3629-18-MB-T | 36"W x 18"D x 29"H | 120 | \$1,312 |
| OS3636-18-MB-T | 36"W x 18"D x 36"H | 133 | \$1,440 |
| OS3642-18-MB-T | 36"W x 18"D x 42"H | 146 | \$1,512 |
| OS3654-18-MB-T | 36"W x 18"D x 54"H | 155 | \$1,627 |
| 24" Depth | | | |
| OS3629-24-MB-T | 36"W x 24"D x 29"H | 124 | \$1,366 |
| OS3636-24-MB-T | 36"W x 24"D x 36"H | 137 | \$1,511 |
| OS3642-24-MB-T | 36"W x 24"D x 42"H | 150 | \$1,611 |
| OS3654-24-MB-T | 36"W x 24"D x 54"H | 159 | \$1,807 |
| | 36"W x 24"D x 72"H | 218 | \$1,824 |

| 48" W Open Storage (OS) | | | |
|-------------------------|--------------------|------|------------|
| Model Number | Description | Wgt. | List Price |
| 18" Depth | | | |
| OS4829-18-MB-T | 48"W x 18"D x 29"H | | \$1,699 |
| OS4836-18-MB-T | 48"W x 18"D x 36"H | | \$1,857 |
| OS4842-18-MB-T | 48"W x 18"D x 42"H | | \$1,914 |
| OS4854-18-MB-T | 48"W x 18"D x 54"H | | \$2,157 |
| 24" Depth | | | |
| OS4829-24-MB-T | 48"W x 24"D x 29"H | | \$1,797 |
| OS4836-24-MB-T | 48"W x 24"D x 36"H | | \$1,974 |
| OS4842-24-MB-T | 48"W x 24"D x 42"H | | \$2,059 |
| OS4854-24-MB-T | 48"W x 24"D x 54"H | | \$2,320 |

| 60" W Open Storage (OS) | | | |
|-------------------------|--------------------|------|------------|
| Model Number | Description | Wgt. | List Price |
| 18" Depth | | | |
| OS6029-18-MB-T | 60"W x 18"D x 29"H | | \$1,777 |
| OS6036-18-MB-T | 60"W x 18"D x 36"H | 261 | \$1,969 |
| 24" Depth | | | |
| OS6029-24-MB-T | 60"W x 24"D x 29"H | | \$1,894 |
| OS6036-24-MB-T | 60"W x 24"D x 36"H | 268 | \$2,068 |

| 72" W Open Storage (OS) | | | |
|-------------------------|--------------------|------|------------|
| Model Number | Description | Wgt. | List Price |
| 18" Depth | | | |
| OS7229-18-MB-T | 72"W x 18"D x 29"H | | \$2,018 |
| OS7236-18-MB-T | 72"W x 18"D x 36"H | 261 | \$2,150 |
| 24" Depth | | | |
| OS7229-24-MB-T | 72"W x 24"D x 29"H | | \$2,150 |
| OS7236-24-MB-T | 72"W x 24"D x 36"H | 268 | \$2,315 |

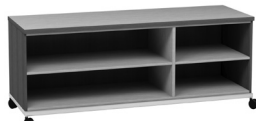
RUBIX OPEN STORAGE

Storage



Open Storage Alternate Shelves (OSA)

| 60" W Open Storage Alternate Shelves (OSA) | | | |
|--|--------------------|------|------------|
| Model Number | Description | Wgt. | List Price |
| 18" Depth | | | |
| OSA6029-18-MB-T | 60"W x 18"D x 29"H | | \$1,777 |
| OSA6036-18-MB-T | 60"W x 18"D x 36"H | 261 | \$1,969 |
| 24" Depth | | | |
| OSA6029-24-MB-T | 60"W x 24"D x 29"H | | \$1,894 |
| OSA6036-24-MB-T | 60"W x 24"D x 36"H | 268 | \$2,068 |



Open Storage Alternate Shelves (OSA)

| 72" W Open Storage Alternate Shelves (OSA) | | | |
|--|--------------------|------|------------|
| Model Number | Description | Wgt. | List Price |
| 18" Depth | | | |
| OSA7229-18-MB-T | 72"W x 18"D x 29"H | | \$2,018 |
| OSA7236-18-MB-T | 72"W x 18"D x 36"H | 261 | \$2,150 |
| 24" Depth | | | |
| OSA7229-24-MB-T | 72"W x 24"D x 29"H | | \$2,150 |
| OSA7236-24-MB-T | 72"W x 24"D x 36"H | 268 | \$2,315 |



Open Cubicle Storage (OCB)

| 36" W Open Cubicle Storage (OCB) 1 Vertical Partition, Adjustable Shelves | | | |
|---|-------------------------------------|-----|------------|
| Model Number | Description | Wt. | List Price |
| 18" Depth | | | |
| OCB4-3629-18-MB-T | 36"W x 18"D x 29"H, 4 Compartments | 125 | \$1,440 |
| OCB6-3636-18-MB-T | 36"W x 18"D x 36"H, 6 Compartments | 135 | \$1,524 |
| OCB6-3642-18-MB-T | 36"W x 18"D x 42"H, 6 Compartments | 150 | \$1,597 |
| 24" Depth | | | |
| OCB4-3629-24-MB-T | 36"W x 24"D x 29"H, 4 Compartments | 133 | \$1,363 |
| OCB6-3636-24-MB-T | 36"W x 24"D x 36"H, 6 Compartments | 139 | \$1,516 |
| OCB6-3642-24-MB-T | 36"W x 24"D x 42"H, 6 Compartments | 154 | \$1,610 |
| OCB10-3672-24-MB-T | 36"W x 24"D x 72"H, 10 Compartments | 223 | \$1,886 |



Open Cubicle Storage (OCB)

| 36" W Open Cubicle Storage Storage (OCB) Fixed Compartments | | | |
|---|-------------------------------------|-----|------------|
| Model Number | Description | Wt. | List Price |
| 18" Depth | | | |
| OCB12-3629-18-MB-T | 36"W x 18"D x 29"H, 12 Compartments | 135 | \$1,532 |
| OCB15-3636-18-MB-T | 36"W x 18"D x 36"H, 15 Compartments | 145 | \$1,724 |
| OCB18-3642-18-MB-T | 36"W x 18"D x 42"H, 18 Compartments | 150 | \$1,939 |
| 24" Depth | | | |
| OCB12-3629-24-MB-T | 36"W x 24"D x 29"H, 12 Compartments | 133 | \$1,772 |
| OCB15-3636-24-MB-T | 36"W x 24"D x 36"H, 15 Compartments | 139 | \$1,993 |
| OCB18-3642-24-MB-T | 36"W x 24"D x 42"H, 18 Compartments | 154 | \$2,248 |



Open Cubicle Storage (OCB)

| 48" W Open Cubicle Storage (OCB) Vertical Partitions, Adjustable Shelves | | | |
|--|-------------------------------------|------|------------|
| Model Number | Description | Wgt. | List Price |
| 18" Depth | | | |
| OCB12-4829-18-MB-T | 48"W x 18"D x 29"H, 12 Compartments | | \$1,908 |
| OCB9-4836-18-MB-T | 48"W x 18"D x 36"H, 9 Compartments | | \$1,928 |
| OCB9-4842-18-MB-T | 48"W x 18"D x 42"H, 9 Compartments | 225 | \$2,010 |
| OCB12-4854-18-MB-T | 48"W x 18"D x 54"H, 12 Compartments | 250 | \$2,264 |
| 24" Depth | | | |
| OCB12-4829-24-MB-T | 48"W x 24"D x 29"H, 12 Compartments | | \$2,010 |
| OCB9-4836-24-MB-T | 48"W x 24"D x 36"H, 9 Compartments | | \$2,062 |
| OCB9-4842-24-MB-T | 48"W x 24"D x 42"H, 9 Compartments | 229 | \$2,171 |
| OCB12-4854-24-MB-T | 48"W x 24"D x 54"H, 12 Compartments | 256 | \$2,446 |



Open Cubicle Storage (OCB)

| 48" W Open Cubicle Storage (OCB) Fixed Compartments | | | |
|---|-------------------------------------|------|------------|
| Model Number | Description | Wgt. | List Price |
| 18" Depth | | | |
| OCB20-4842-18-MB-T | 48"W x 18"D x 42"H, 20 Compartments | | \$2,094 |
| 24" Depth | | | |
| OCB20-4842-24-MB-T | 48"W x 24"D x 42"H, 20 Compartments | | \$2,351 |

Note: 72"H units will have one or two fixed shelves. Units with no vertical partition will have one fixed shelf. Units with a vertical partition will have two fixed shelves. The remaining shelves are adjustable.

| Set Up Charges and Upcharges for Non-Standard and Custom Finishes | | |
|---|--|------------|
| Model Number | Description | List Price |
| Group 2 Powder Coat | Set up charge, per color, per order, for Group 2 Powder Coat | \$329 |
| Non-Standard PVC | Upcharge, per color, per order, for non-standard PVC | \$911 |

RUBIX OPEN STORAGE

Storage



36" Open Storage (OS)

| 36" W Open Storage (OS) | | | | |
|-------------------------|--------------------|-----|------------|-----------|
| Model Number | Description | Wt. | List Price | 18" Depth |
| OS3629-18-MB-L | 36"W x 18"D x 29"H | 120 | \$1,579 | |
| OS3636-18-MB-L | 36"W x 18"D x 36"H | 133 | \$1,996 | |
| OS3642-18-MB-L | 36"W x 18"D x 42"H | 146 | \$2,032 | |
| OS3654-18-MB-L | 36"W x 18"D x 54"H | 155 | \$2,299 | |
| 24" Depth | | | | |
| OS3629-24-MB-L | 36"W x 24"D x 29"H | 124 | \$1,711 | |
| OS3636-24-MB-L | 36"W x 24"D x 36"H | 137 | \$1,956 | |
| OS3642-24-MB-L | 36"W x 24"D x 42"H | 150 | \$2,367 | |
| OS3654-24-MB-L | 36"W x 24"D x 54"H | 159 | \$2,646 | |
| | 36"W x 24"D x 72"H | 218 | \$2,979 | |



Open Storage Alternate Shelves (OSA)

| 72" W Open Storage Alternate Shelves (OSA) | | | | |
|--|--------------------|------|------------|-----------|
| Model Number | Description | Wgt. | List Price | 18" Depth |
| OSA7229-18-MB-L | 72"W x 18"D x 29"H | | \$2,808 | |
| OSA7236-18-MB-L | 72"W x 18"D x 36"H | 261 | \$2,912 | |
| 24" Depth | | | | |
| OSA7229-24-MB-L | 72"W x 24"D x 29"H | | \$2,770 | |
| OSA7236-24-MB-L | 72"W x 24"D x 36"H | 268 | \$3,215 | |



48" Open Storage (OS)

| 48" W Open Storage (OS) | | | | |
|-------------------------|--------------------|------|------------|-----------|
| Model Number | Description | Wgt. | List Price | 18" Depth |
| OS4829-18-MB-L | 48"W x 18"D x 29"H | | \$1,986 | |
| OS4836-18-MB-L | 48"W x 18"D x 36"H | | \$2,411 | |
| OS4842-18-MB-L | 48"W x 18"D x 42"H | | \$2,569 | |
| OS4854-18-MB-L | 48"W x 18"D x 54"H | | \$3,084 | |
| 24" Depth | | | | |
| OS4829-24-MB-L | 48"W x 24"D x 29"H | | \$2,269 | |
| OS4836-24-MB-L | 48"W x 24"D x 36"H | | \$2,632 | |
| OS4842-24-MB-L | 48"W x 24"D x 42"H | | \$2,867 | |
| OS4854-24-MB-L | 48"W x 24"D x 54"H | | \$3,578 | |



Open Cubicle Storage (OCB)

| 36" W Open Cubicle Storage (OCB) 1 Vertical Partition, Adjustable Shelves | | | | |
|---|-------------------------------------|-----|------------|-----------|
| Model Number | Description | Wt. | List Price | 18" Depth |
| OCB4-3629-18-MB-L | 36"W x 18"D x 29"H, 4 Compartments | 125 | \$1,685 | |
| OCB6-3636-18-MB-L | 36"W x 18"D x 36"H, 6 Compartments | 135 | \$2,102 | |
| OCB6-3642-18-MB-L | 36"W x 18"D x 42"H, 6 Compartments | 150 | \$2,137 | |
| 24" Depth | | | | |
| OCB4-3629-24-MB-L | 36"W x 24"D x 29"H, 4 Compartments | 133 | \$1,816 | |
| OCB6-3636-24-MB-L | 36"W x 24"D x 36"H, 6 Compartments | 139 | \$2,062 | |
| OCB6-3642-24-MB-L | 36"W x 24"D x 42"H, 6 Compartments | 154 | \$2,472 | |
| OCB10-3672-24-MB-L | 36"W x 24"D x 72"H, 10 Compartments | 223 | \$3,330 | |



60" Open Storage (OS)

| 60" W Open Storage (OS) | | | | |
|-------------------------|--------------------|------|------------|-----------|
| Model Number | Description | Wgt. | List Price | 18" Depth |
| OS6029-18-MB-T | 60"W x 18"D x 29"H | | \$1,777 | |
| OS6036-18-MB-T | 60"W x 18"D x 36"H | 261 | \$1,969 | |
| 24" Depth | | | | |
| OS6029-24-MB-T | 60"W x 24"D x 29"H | | \$1,894 | |
| OS6036-24-MB-T | 60"W x 24"D x 36"H | 268 | \$2,068 | |



Open Cubicle Storage (OCB)

| 36" W Open Cubicle Storage (OCB) Fixed Compartments | | | | |
|---|-------------------------------------|-----|------------|-----------|
| Model Number | Description | Wt. | List Price | 18" Depth |
| OCB12-3629-18-MB-L | 36"W x 18"D x 29"H, 12 Compartments | 135 | \$1,837 | |
| OCB15-3636-18-MB-L | 36"W x 18"D x 36"H, 15 Compartments | 145 | \$2,207 | |
| OCB18-3642-18-MB-L | 36"W x 18"D x 42"H, 18 Compartments | 150 | \$2,348 | |
| 24" Depth | | | | |
| OCB12-3629-24-MB-L | 36"W x 24"D x 29"H, 12 Compartments | 133 | \$1,895 | |
| OCB15-3636-24-MB-L | 36"W x 24"D x 36"H, 15 Compartments | 139 | \$2,312 | |
| OCB18-3642-24-MB-L | 36"W x 24"D x 42"H, 18 Compartments | 154 | \$2,379 | |



72" Open Storage (OS)

| 72" W Open Storage (OS) | | | | |
|-------------------------|--------------------|------|------------|-----------|
| Model Number | Description | Wgt. | List Price | 18" Depth |
| OS7229-18-MB-L | 72"W x 18"D x 29"H | | \$2,522 | |
| OS7236-18-MB-L | 72"W x 18"D x 36"H | 261 | \$2,912 | |
| 24" Depth | | | | |
| OS7229-24-MB-L | 72"W x 24"D x 29"H | | \$2,770 | |
| OS7236-24-MB-L | 72"W x 24"D x 36"H | 268 | \$3,215 | |



Open Cubicle Storage (OCB)

| 48" W Open Cubicle Storage (OCB) Vertical Partitions, Adjustable Shelves | | | | |
|--|-------------------------------------|------|------------|-----------|
| Model Number | Description | Wgt. | List Price | 18" Depth |
| OCB12-4829-18-MB-L | 48"W x 18"D x 29"H, 12 Compartments | | \$2,196 | |
| OCB9-4836-18-MB-L | 48"W x 18"D x 36"H, 9 Compartments | | \$2,516 | |
| OCB9-4842-18-MB-L | 48"W x 18"D x 42"H, 9 Compartments | 225 | \$2,674 | |
| OCB12-4854-18-MB-L | 48"W x 18"D x 54"H, 12 Compartments | 250 | \$3,189 | |
| 24" Depth | | | | |
| OCB12-4829-24-MB-L | 48"W x 24"D x 29"H, 12 Compartments | | \$2,302 | |
| OCB9-4836-24-MB-L | 48"W x 24"D x 36"H, 9 Compartments | | \$2,622 | |
| OCB9-4842-24-MB-L | 48"W x 24"D x 42"H, 9 Compartments | 229 | \$2,779 | |
| OCB12-4854-24-MB-L | 48"W x 24"D x 54"H, 12 Compartments | 256 | \$3,294 | |



Open Storage Alternate Shelves (OSA)

| 60" W Open Storage Alternate Shelves (OSA) | | | | |
|--|--------------------|------|------------|-----------|
| Model Number | Description | Wgt. | List Price | 18" Depth |
| OSA6029-18-MB-T | 60"W x 18"D x 29"H | | \$1,777 | |
| OSA6036-18-MB-T | 60"W x 18"D x 36"H | 261 | \$1,969 | |
| 24" Depth | | | | |
| OSA6029-24-MB-T | 60"W x 24"D x 29"H | | \$1,894 | |
| OSA6036-24-MB-T | 60"W x 24"D x 36"H | 268 | \$2,068 | |



Open Cubicle Storage (OCB)

| 48" W Open Cubicle Storage (OCB) Fixed Compartments | | | | |
|---|-------------------------------------|------|------------|-----------|
| Model Number | Description | Wgt. | List Price | 18" Depth |
| OCB20-4842-18-MB-L | 48"W x 18"D x 42"H, 20 Compartments | | \$2,885 | |
| 24" Depth | | | | |
| OCB20-4842-24-MB-L | 48"W x 24"D x 42"H, 20 Compartments | | \$2,990 | |

RUBIX OPEN TOTE STORAGE

Storage



General Specifications

Non-Locking Cabinet: Are constructed with 3/4" thick engineered wood side panels, sub-tops, vertical dividers and shelves. Backs are constructed with 3/4" thick engineered wood. Cabinet finish material is thermally fused laminate (TFL) case and doors/drawers, with 3mm PVC edging. Worksurface tops receive a high-pressure laminate surface. Cabinets 72"H or taller do not receive a worksurface top. *Other materials available:* High-pressure laminate (HPL) case and doors/drawers edges and wood veneer case and doors/drawers with wood edges available and will incur an upcharge.

Frame: Steel frame is 11 gauge 1-1/4" square steel tubing. Frame assembly is attached to cabinet using wood screws. Mobile units are standard, using 75mm twin wheel locking casters that attach via threaded inserts on underside of the steel frame assembly. **Note: 54"H & 72"H units receive 100mm casters.*

* Freestanding steel support legs and mobile casters use the same threaded inserts and are interchangeable. Legs are available upon request for an upcharge.

* Locks are available for an upcharge.

Features of various cabinet configurations includes:

- Concealed door hinges and a variety of pulls available.
- Full extension drawers.
- TOTR Tote rails for use of both TOT03-_ and TOT06-_ Tote totes.

Finish: Standard powder coat on all metal parts is black; other colors may be specified. Visit our website for Finish and Color Guide for choices.



Open Tote Rail with Open Storage (TOTOS)

| 36" W Open Tote Rail Storage with Open Storage (TOTOS) | | | |
|--|--------------------|-----|-------------------------|
| Model Number | Description | Wt. | List Price 18" Depth |
| TOTOS3629-24-MB-T | 36"W x 24"D x 29"H | 125 | \$1,813 |
| TOTOS3636-24-MB-T | 36"W x 24"D x 36"H | 135 | \$2,031 |
| TOTOS3642-24-MB-T | 36"W x 24"D x 42"H | 150 | \$2,188 |



Open Tote Rail with Open Storage (TOTOS)

| 48" W Open Tote Rail Storage (TOTOS) | | | |
|--------------------------------------|--------------------|------|-------------------------|
| Model Number | Description | Wgt. | List Price 24" Depth |
| TOTOS4829-24-MB-T | 48"W x 24"D x 29"H | | \$1,886 |
| TOTOS4836-24-MB-T | 48"W x 24"D x 36"H | | \$2,089 |
| TOTOS4842-24-MB-T | 48"W x 24"D x 42"H | | \$2,179 |



Open Tote Rail with Open Storage (TOTOS)

| 36" W Open Tote Rail Storage with Open Storage (TOTOS) | | | |
|--|--------------------|-----|-------------------------|
| Model Number | Description | Wt. | List Price 18" Depth |
| TOTOS3629-24-MB-L | 36"W x 24"D x 29"H | 125 | \$1,916 |
| TOTOS3636-24-MB-L | 36"W x 24"D x 36"H | 135 | \$2,031 |
| TOTOS3642-24-MB-L | 36"W x 24"D x 42"H | 150 | \$1,916 |



Open Tote Rail with Open Storage (TOTOS)

| 48" W Open Tote Rail Storage (TOTOS) | | | |
|--------------------------------------|--------------------|------|-------------------------|
| Model Number | Description | Wgt. | List Price 24" Depth |
| TOTOS4829-24-MB-L | 48"W x 24"D x 29"H | | \$2,169 |
| TOTOS4836-24-MB-L | 48"W x 24"D x 36"H | | \$2,169 |
| TOTOS4842-24-MB-L | 48"W x 24"D x 42"H | | \$2,422 |

Toto 3" Tote - 3"H x 12.25"W x 15.25"D

| Model No. | Description | List Price |
|-----------|---------------|------------|
| TOT03-T01 | Translucent | \$38 |
| TOT03-T13 | Blue Heron | \$38 |
| TOT03-T15 | Falcon | \$38 |
| TOT03-T18 | Purple Martin | \$38 |
| TOT03-T21 | Goldfinch | \$38 |
| TOT03-T22 | Parakeet | \$38 |
| TOT03-T23 | Oriole | \$38 |
| TOT03-T24 | Cardinal | \$38 |
| TOT03-T27 | Blue Wren | \$38 |
| TOT03-T29 | Hummingbird | \$38 |

Toto 6" Tote - 6"H x 12.25"W x 15.25"D

| Model No. | Description | List Price |
|-----------|---------------|------------|
| TOT06-T01 | Translucent | \$52 |
| TOT06-T13 | Blue Heron | \$52 |
| TOT06-T15 | Falcon | \$52 |
| TOT06-T18 | Purple Martin | \$52 |
| TOT06-T21 | Goldfinch | \$52 |
| TOT06-T22 | Parakeet | \$52 |
| TOT06-T23 | Oriole | \$52 |
| TOT06-T24 | Cardinal | \$52 |
| TOT06-T27 | Blue Wren | \$52 |
| TOT06-T29 | Hummingbird | \$52 |

Toto Tote Rails - For use in casework or as undermount rails for tables and desks

| Model No. | Description | List Price |
|-------------|--|------------|
| TOTR-PR-T15 | Pair of Tote Rails, T15 Falcon | \$28 |
| TOTR-LH-T15 | Replacement Left Hand Tote Rail, Falcon | \$14 |
| TOTR-RH-T15 | Replacement Right Hand Tote Rail, T15 Falcon | \$14 |



| 48" W Locker Storage | | | |
|--------------------------|--------------------|------|------------|
| Model Number | Description | Wgt. | List Price |
| 18" Depth | | | |
| W4854-18-MB-T | 48"W x 18"D x 54"H | 248 | \$2,242 |
| 24" Depth | | | |
| W4854-24-MB-T | 48"W x 24"D x 54"H | 254 | \$3,322 |
| 48" W Locker Storage (W) | | | |
| Model Number | Description | Wgt. | List Price |
| 18" Depth | | | |
| W4854-18-MB-L | 48"W x 18"D x 54"H | 248 | \$3,168 |
| 24" Depth | | | |
| W4854-24-MB-L | 48"W x 24"D x 54"H | 254 | \$3,620 |

| Set Up Charges and Upcharges for Non-Standard and Custom Finishes | | |
|---|--|------------|
| Model Number | Description | List Price |
| Group 2 Powder Coat | Set up charge, per color, per order, for Group 2 Powder Coat | \$329 |
| Non-Standard PVC | Upcharge, per color, per order, for non-standard PVC | \$911 |

General Specifications

Non-Locking Cabinet: Are constructed with 3/4" thick engineered wood side panels, sub-tops, vertical dividers and shelves. Backs are constructed with 3/4" thick engineered wood. Cabinet finish material is thermally fused laminate (TFL) case and doors/drawers, with 3mm PVC edging. Worksurface tops receive a high-pressure laminate surface. Cabinets 72"H or taller do not receive a worksurface top. **Other materials available:*** High-pressure laminate (HPL) case and doors/drawers edges and wood veneer case and doors/drawers with wood edges available and will incur an upcharge.

Frame: Steel frame is 11 gauge 1-1/4" square steel tubing. Frame assembly is attached to cabinet using wood screws. Mobile units are standard, using 75mm twin wheel locking casters that attach via threaded inserts on underside of the steel frame assembly. **Note: 54"H & 72"H units receive 100mm casters.*
 * Freestanding steel support legs and mobile casters use the same threaded inserts and are interchangeable. Legs are available upon request for an upcharge.
 * Locks are available for an upcharge.

Finish: Standard powder coat on all metal parts is black; other colors may be specified. Visit our website for Finish and Color Guide for choices.



Drawer Storage (DS)

General Specifications

Non-Locking Cabinet: Are constructed with 3/4" thick engineered wood side panels, sub-tops, vertical dividers and shelves. Backs are constructed with 3/4" thick engineered wood. Cabinet finish material is thermally fused laminate (TFL) case and doors/drawers, with 3mm PVC edging. Worksurface tops receive a high-pressure laminate surface. Cabinets 72"H or taller do not receive a worksurface top. **Other materials available:** *High-pressure laminate (HPL) case and doors/drawers edges and wood veneer case and doors/drawers with wood edges available and will incur an upcharge.*

Frame: Steel frame is 11 gauge 1-1/4" square steel tubing. Frame assembly is attached to cabinet using wood screws. Mobile units are standard, using 75mm twin wheel locking casters that attach via threaded inserts on underside of the steel frame assembly. **Note: 54"H & 72"H units receive 100mm casters.*

* Freestanding steel support legs and mobile casters use the same threaded inserts and are interchangeable. Legs are available upon request for an upcharge.
* Locks are available for an upcharge.

Features of various cabinet configurations includes:

- Concealed door hinges and a variety of pulls available.
- Full extension drawers.
- TOTR Tote rails for use of both TOT03-_ and TOT06-_ Tote totes.

Finish: Standard powder coat on all metal parts is black; other colors may be specified. Visit our website for Finish and Color Guide for choices.

| 36" W Drawer Storage (DS) | | | |
|---------------------------|--------------------|-----|------------|
| Model Number | Description | Wt. | List Price |
| 18" Depth | | | |
| DS3636-18-MB-TT-P?N | 36"W x 18"D x 36"H | 192 | \$2,623 |
| DS3642-18-MB-TT-P?N | 36"W X 18"D X 36"D | | \$2,650 |
| 24" Depth | | | |
| DS3636-24-MB-TT-P?N | 36"W x 24"D x 36"H | 196 | \$2,778 |
| DS3642-24-MB-TT-P?N | 36"W x 24"D x 42"H | | \$2,805 |

| 36" W Drawer Storage (DS) | | | |
|---------------------------|--------------------|-----|------------|
| Model Number | Description | Wt. | List Price |
| 18" Depth | | | |
| DS3636-18-MB-LL-P?N | 36"W x 18"D x 36"H | 192 | \$3,190 |
| DS3642-18-MB-LL-P?N | 36"W X 18"D X 36"D | | \$3,529 |
| 24" Depth | | | |
| DS3636-24-MB-LL-P?N | 36"W x 24"D x 36"H | 196 | \$3,639 |
| DS3642-24-MB-LL-P?N | 36"W x 24"D x 42"H | | \$3,980 |

| 36" W Drawer Storage (DS) | | | |
|---------------------------|--------------------|-----|------------|
| Model Number | Description | Wt. | List Price |
| 18" Depth | | | |
| DS3636-18-MB-TL-P?N | 36"W x 18"D x 36"H | 192 | \$2,822 |
| DS3642-18-MB-TL-P?N | 36"W X 18"D X 36"D | | \$3,195 |
| 24" Depth | | | |
| DS3636-24-MB-TL-P?N | 36"W x 24"D x 36"H | 196 | \$2,988 |
| DS3642-24-MB-TL-P?N | 36"W x 24"D x 42"H | | \$3,378 |

| Set Up Charges and Upcharges for Non-Standard and Custom Finishes | | |
|---|--|------------|
| Model Number | Description | List Price |
| Group 2 Powder Coat | Set up charge, per color, per order, for Group 2 Powder Coat | \$329 |
| Non-Standard PVC | Upcharge, per color, per order, for non-standard PVC | \$911 |
| Sprayon Finish | Upcharge, per color, per order, for Sprayon finish | \$329 |

RUBIX CUPBOARD STORAGE

Storage



General Specifications

Non-Locking Cabinet: Are constructed with 3/4" thick engineered wood side panels, sub-tops, vertical dividers and shelves. Backs are constructed with 3/4" thick engineered wood. Cabinet finish material is thermally fused laminate (TFL) case and doors/drawers, with 3mm PVC edging. Worksurface tops receive a high-pressure laminate surface. Cabinets 72"H or taller do not receive a worksurface top. **Other materials available:*** High-pressure laminate (HPL) case and doors/drawers edges and wood veneer case and doors/drawers with wood edges available and will incur an upcharge.

Frame: Steel frame is 11 gauge 1-1/4" square steel tubing. Frame assembly is attached to cabinet using wood screws. Mobile units are standard, using 75mm twin wheel locking casters that attach via threaded inserts on underside of the steel frame assembly. **Note: 54"H & 72"H units receive 100mm casters.*

* Freestanding steel support legs and mobile casters use the same threaded inserts and are interchangeable. Legs are available upon request for an upcharge.

Features of various cabinet configurations includes:

- Concealed door hinges and a variety of pulls available.

Finish: Standard powder coat on all metal parts is black; other colors may be specified. Visit our website for Finish and Color Guide for choices.



Cupboard Storage (CS)

| 36" W Cupboard Storage (CS) | | | |
|-----------------------------|--------------------|-----|------------|
| Model Number | Description | Wt. | List Price |
| 18" Depth | | | |
| CS3629-18-MB-TT-H?P?N | 36"W x 18"D x 29"H | 130 | \$1,312 |
| CS3636-18-MB-TT-H?P?N | 36"W x 18"D x 36"H | 140 | \$1,771 |
| CS3642-18-MB-TT-H?P?N | 36"W x 18"D x 42"H | 156 | \$1,879 |
| CS3654-18-MB-TT-H?P?N | 36"W x 18"D x 54"H | 165 | \$2,026 |
| 24" Depth | | | |
| CS3629-24-MB-TT-H?P?N | 36"W x 24"D x 29"H | 134 | \$1,662 |
| CS3636-24-MB-TT-H?P?N | 36"W x 24"D x 36"H | 144 | \$1,840 |
| CS3642-24-MB-TT-H?P?N | 36"W x 24"D x 42"H | 160 | \$1,977 |
| CS3654-24-MB-TT-H?P?N | 36"W x 24"D x 54"H | 169 | \$2,202 |
| CS3672-24-MB-TT-H?P?N | 36"W x 24"D x 72"H | 228 | \$2,351 |



Cupboard Storage (CS)

| 48" W Cupboard Storage (CS) | | | |
|-----------------------------|--------------------|------|------------|
| Model Number | Description | Wgt. | List Price |
| 18" Depth | | | |
| CS4829-18-MB-TT-H?P?N | 48"W x 18"D x 29"H | | \$1,960 |
| CS4836-18-MB-TT-H?P?N | 48"W x 18"D x 36"H | | \$2,183 |
| CS4842-18-MB-TT-H?P?N | 48"W x 18"D x 42"H | | \$2,258 |
| CS4854-18-MB-TT-H?P?N | 48"W x 18"D x 54"H | | \$2,597 |
| 24" Depth | | | |
| CS4829-24-MB-TT-H?P?N | 48"W x 24"D x 29"H | | \$2,059 |
| CS4836-24-MB-TT-H?P?N | 48"W x 24"D x 36"H | | \$2,299 |
| CS4842-24-MB-TT-H?P?N | 48"W x 24"D x 42"H | | \$2,403 |
| CS4854-24-MB-TT-H?P?N | 48"W x 24"D x 54"H | | \$2,760 |



Cupboard Storage (CS)

| 60" W Cupboard Storage (CS) | | | |
|-----------------------------|--------------------|------|------------|
| Model Number | Description | Wgt. | List Price |
| 18" Depth | | | |
| CS6029-18-MB-TT-H?P?N | 60"W x 18"D x 29"H | 241 | \$2,235 |
| CS6036-18-MB-TT-H?P?N | 60"W x 18"D x 36"H | 287 | \$2,519 |
| 24" Depth | | | |
| CS6029-24-MB-TT-H?P?N | 60"W x 24"D x 29"H | 248 | \$2,358 |
| CS6036-24-MB-TT-H?P?N | 60"W x 24"D x 36"H | 295 | \$2,618 |



Cupboard Storage (CS)

| 72" W Cupboard Storage (CS) | | | |
|-----------------------------|--------------------|------|------------|
| Model Number | Description | Wgt. | List Price |
| 18" Depth | | | |
| CS7229-18-MB-TT-H?P?N | 72"W x 18"D x 29"H | 241 | \$2,482 |
| CS7236-18-MB-TT-H?P?N | 72"W x 18"D x 36"H | 287 | \$2,698 |
| 24" Depth | | | |
| CS7229-24-MB-TT-H?P?N | 72"W x 24"D x 29"H | 248 | \$2,613 |
| CS7236-24-MB-TT-H?P?N | 72"W x 24"D x 36"H | 295 | \$2,862 |

RUBIX CUPBOARD STORAGE

Storage



Cupboard Cubicle Storage (CCB)

| 36" W Cupboard Cubicle Storage (CCB) | | | |
|--------------------------------------|--------------------|-----|------------|
| Model Number | Description | Wt. | List Price |
| 18" Depth | | | |
| CCB3629-18-MB-TT-H?P?N | 36"W x 18"D x 29"H | 135 | \$1,668 |
| CCB3636-18-MB-TT-H?P?N | 36"W x 18"D x 36"H | 145 | \$1,856 |
| CCB3642-18-MB-TT-H?P?N | 36"W x 18"D x 42"H | 160 | \$1,963 |
| 24" Depth | | | |
| CCB3629-24-MB-TT-H?P?N | 36"W x 24"D x 29"H | 139 | \$1,731 |
| CCB3636-24-MB-TT-H?P?N | 36"W x 24"D x 36"H | 149 | \$1,878 |
| CCB3642-24-MB-TT-H?P?N | 36"W x 24"D x 42"H | 164 | \$2,060 |
| CCB3672-24-MB-TT-H?P?N | 36"W x 24"D x 72"H | 180 | \$2,515 |



Cupboard Cubicle Storage (CCB)

| 48" W Cupboard Cubicle Storage (CCB) | | | |
|--------------------------------------|--------------------|------|------------|
| Model Number | Description | Wgt. | List Price |
| 18" Depth | | | |
| CCB4829-18-MB-TT-H?P?N | 48"W x 18"D x 29"H | | \$2,031 |
| CCB4836-18-MB-TT-H?P?N | 48"W x 18"D x 36"H | | \$2,252 |
| CCB4842-18-MB-TT-H?P?N | 48"W x 18"D x 42"H | | \$2,354 |
| 24" Depth | | | |
| CCB4829-24-MB-TT-H?P?N | 48"W x 24"D x 29"H | | \$2,128 |
| CCB4836-24-MB-TT-H?P?N | 48"W x 24"D x 36"H | | \$2,387 |
| CCB4842-24-MB-TT-H?P?N | 48"W x 24"D x 42"H | 266 | \$2,516 |

Note: 72"H units will have one or two fixed shelves. Units with no vertical partition will have one fixed shelf. Units with a vertical partition will have two fixed shelves. The remaining shelves are adjustable.

| Set Up Charges and Upcharges for Non-Standard and Custom Finishes | | |
|---|--|------------|
| Model Number | Description | List Price |
| Group 2 Powder Coat | Set up charge, per color, per order, for Group 2 Powder Coat | \$329 |
| Non-Standard PVC | Upcharge, per color, per order, for non-standard PVC | \$911 |
| Sprayon Finish | Upcharge, per color, per order, for Sprayon finish | \$329 |

RUBIX CUPBOARD STORAGE

Storage



Cupboard Storage (CS)

| 36" W Cupboard Storage (CS) | | | | |
|-----------------------------|--------------------|------|------------|--|
| Model Number | Description | Wgt. | List Price | |
| 18" Depth | | | | |
| CS3629-18-MB-LL-H?P?N | 36"W x 18"D x 29"H | 130 | \$1,983 | |
| CS3636-18-MB-LL-H?P?N | 36"W x 18"D x 36"H | 140 | \$2,240 | |
| CS3642-18-MB-LL-H?P?N | 36"W x 18"D x 42"H | 156 | \$2,526 | |
| CS3654-18-MB-LL-H?P?N | 36"W x 18"D x 54"H | 165 | \$2,802 | |
| 24" Depth | | | | |
| CS3629-24-MB-LL-H?P?N | 36"W x 24"D x 29"H | 134 | \$2,113 | |
| CS3636-24-MB-LL-H?P?N | 36"W x 24"D x 36"H | 144 | \$2,403 | |
| CS3642-24-MB-LL-H?P?N | 36"W x 24"D x 42"H | 160 | \$2,858 | |
| CS3654-24-MB-LL-H?P?N | 36"W x 24"D x 54"H | 169 | \$3,148 | |
| CS3672-24-MB-LL-H?P?N | 36"W x 24"D x 72"H | 228 | \$3,367 | |



Cupboard Storage (CS)

| 48" W Cupboard Storage (CS) | | | | |
|-----------------------------|--------------------|------|------------|--|
| Model Number | Description | Wgt. | List Price | |
| 18" Depth | | | | |
| CS4829-18-MB-LL-H?P?N | 48"W x 18"D x 29"H | | \$2,313 | |
| CS4836-18-MB-LL-H?P?N | 48"W x 18"D x 36"H | | \$2,900 | |
| CS4842-18-MB-LL-H?P?N | 48"W x 18"D x 42"H | | \$3,102 | |
| CS4854-18-MB-LL-H?P?N | 48"W x 18"D x 54"H | | \$3,802 | |
| 24" Depth | | | | |
| CS4829-24-MB-LL-H?P?N | 48"W x 24"D x 29"H | | \$2,593 | |
| CS4836-24-MB-LL-H?P?N | 48"W x 24"D x 36"H | | \$3,122 | |
| CS4842-24-MB-LL-H?P?N | 48"W x 24"D x 42"H | | \$3,403 | |
| CS4854-24-MB-LL-H?P?N | 48"W x 24"D x 54"H | | \$4,297 | |



Cupboard Cubicle Storage (CCB)

| 36" W Cupboard Cubicle Storage (CCB) | | | | |
|--------------------------------------|--------------------|------|------------|--|
| Model Number | Description | Wgt. | List Price | |
| 18" Depth | | | | |
| CCB3629-18-MB-LL-H?P?N | 36"W x 18"D x 29"H | 135 | \$2,102 | |
| CCB3636-18-MB-LL-H?P?N | 36"W x 18"D x 36"H | 145 | \$2,374 | |
| CCB3642-18-MB-LL-H?P?N | 36"W x 18"D x 42"H | 160 | \$2,660 | |
| 24" Depth | | | | |
| CCB3629-24-MB-LL-H?P?N | 36"W x 24"D x 29"H | 139 | \$2,231 | |
| CCB3636-24-MB-LL-H?P?N | 36"W x 24"D x 36"H | 149 | \$2,537 | |
| CCB3642-24-MB-LL-H?P?N | 36"W x 24"D x 42"H | 164 | \$2,993 | |
| CCB3672-24-MB-LL-H?P?N | 36"W x 24"D x 72"H | 180 | \$4,138 | |



Cupboard Storage (CS)

| 60" W Cupboard Storage (CS) | | | | |
|-----------------------------|--------------------|------|------------|--|
| Model Number | Description | Wgt. | List Price | |
| 18" Depth | | | | |
| CS6029-18-MB-LL-H?P?N | 60"W x 18"D x 29"H | 241 | \$2,867 | |
| CS6036-18-MB-LL-H?P?N | 60"W x 18"D x 36"H | 287 | \$3,225 | |
| 24" Depth | | | | |
| CS6029-24-MB-LL-H?P?N | 60"W x 24"D x 29"H | 248 | \$3,093 | |
| CS6036-24-MB-LL-H?P?N | 60"W x 24"D x 36"H | 295 | \$3,443 | |



Cupboard Cubicle Storage (CCB)

| 48" W Cupboard Cubicle Storage (CCB) | | | | |
|--------------------------------------|--------------------|------|------------|--|
| Model Number | Description | Wgt. | List Price | |
| 18" Depth | | | | |
| CCB4829-18-MB-LL-H?P?N | 48"W x 18"D x 29"H | | \$2,453 | |
| CCB4836-18-MB-LL-H?P?N | 48"W x 18"D x 36"H | | \$3,034 | |
| CCB4842-18-MB-LL-H?P?N | 48"W x 18"D x 42"H | | \$3,290 | |
| 24" Depth | | | | |
| CCB4829-24-MB-LL-H?P?N | 48"W x 24"D x 29"H | | \$2,711 | |
| CCB4836-24-MB-LL-H?P?N | 48"W x 24"D x 36"H | | \$3,286 | |
| CCB4842-24-MB-LL-H?P?N | 48"W x 24"D x 42"H | 266 | \$3,637 | |



Cupboard Storage (CS)

| 72" W Cupboard Storage (CS) | | | | |
|-----------------------------|--------------------|------|------------|--|
| Model Number | Description | Wgt. | List Price | |
| 18" Depth | | | | |
| CS7229-18-MB-LL-H?P?N | 72"W x 18"D x 29"H | 241 | \$2,751 | |
| CS7236-18-MB-LL-H?P?N | 72"W x 18"D x 36"H | 287 | \$3,616 | |
| 24" Depth | | | | |
| CS7229-24-MB-LL-H?P?N | 72"W x 24"D x 29"H | 248 | \$3,419 | |
| CS7236-24-MB-LL-H?P?N | 72"W x 24"D x 36"H | 295 | \$3,918 | |

RUBIX CUPBOARD STORAGE

Storage



Cupboard Storage (CS)

| 36" W Cupboard Storage (CS) | | | | |
|-----------------------------|--------------------|------|------------|--|
| Model Number | Description | Wgt. | List Price | |
| 18" Depth | | | | |
| CS3629-18-MB-TL-H?P?N | 36"W x 18"D x 29"H | 130 | \$1,463 | |
| CS3636-18-MB-TL-H?P?N | 36"W x 18"D x 36"H | 140 | \$1,968 | |
| CS3642-18-MB-TL-H?P?N | 36"W x 18"D x 42"H | 156 | \$2,088 | |
| CS3654-18-MB-TL-H?P?N | 36"W x 18"D x 54"H | 165 | \$2,250 | |
| 24" Depth | | | | |
| CS3629-24-MB-TL-H?P?N | 36"W x 24"D x 29"H | 134 | \$1,847 | |
| CS3636-24-MB-TL-H?P?N | 36"W x 24"D x 36"H | 144 | \$2,046 | |
| CS3642-24-MB-TL-H?P?N | 36"W x 24"D x 42"H | 160 | \$2,194 | |
| CS3654-24-MB-TL-H?P?N | 36"W x 24"D x 54"H | 169 | \$2,447 | |
| CS3672-24-MB-TL-H?P?N | 36"W x 24"D x 72"H | 228 | \$2,615 | |



Cupboard Storage (CS)

| 48" W Cupboard Storage (CS) | | | | |
|-----------------------------|--------------------|------|------------|--|
| Model Number | Description | Wgt. | List Price | |
| 18" Depth | | | | |
| CS4829-18-MB-TL-H?P?N | 48"W x 18"D x 29"H | | \$2,178 | |
| CS4836-18-MB-TL-H?P?N | 48"W x 18"D x 36"H | | \$2,426 | |
| CS4842-18-MB-TL-H?P?N | 48"W x 18"D x 42"H | | \$2,512 | |
| CS4854-18-MB-TL-H?P?N | 48"W x 18"D x 54"H | | \$2,886 | |
| 24" Depth | | | | |
| CS4829-24-MB-TL-H?P?N | 48"W x 24"D x 29"H | | \$2,289 | |
| CS4836-24-MB-TL-H?P?N | 48"W x 24"D x 36"H | | \$2,553 | |
| CS4842-24-MB-TL-H?P?N | 48"W x 24"D x 42"H | | \$2,671 | |
| CS4854-24-MB-TL-H?P?N | 48"W x 24"D x 54"H | | \$3,068 | |



Cupboard Cubicle Storage (CCB)

| 36" W Cupboard Cubicle Storage (CCB) | | | | |
|--------------------------------------|--------------------|------|------------|--|
| Model Number | Description | Wgt. | List Price | |
| 18" Depth | | | | |
| CCB3629-18-MB-TL-H?P?N | 36"W x 18"D x 29"H | 135 | \$1,832 | |
| CCB3636-18-MB-TL-H?P?N | 36"W x 18"D x 36"H | 145 | \$2,038 | |
| CCB3642-18-MB-TL-H?P?N | 36"W x 18"D x 42"H | 160 | \$2,158 | |
| 24" Depth | | | | |
| CCB3629-24-MB-TL-H?P?N | 36"W x 24"D x 29"H | 139 | \$1,905 | |
| CCB3636-24-MB-TL-H?P?N | 36"W x 24"D x 36"H | 149 | \$2,063 | |
| CCB3642-24-MB-TL-H?P?N | 36"W x 24"D x 42"H | 164 | \$2,267 | |
| CCB3672-24-MB-TL-H?P?N | 36"W x 24"D x 72"H | 180 | \$2,763 | |



Cupboard Storage (CS)

| 60" W Cupboard Storage (CS) | | | | |
|-----------------------------|--------------------|------|------------|--|
| Model Number | Description | Wgt. | List Price | |
| 18" Depth | | | | |
| CS6029-18-MB-TL-H?P?N | 60"W x 18"D x 29"H | 241 | \$2,397 | |
| CS6036-18-MB-TL-H?P?N | 60"W x 18"D x 36"H | 287 | \$2,702 | |
| 24" Depth | | | | |
| CS6029-24-MB-TL-H?P?N | 60"W x 24"D x 29"H | 248 | \$2,527 | |
| CS6036-24-MB-TL-H?P?N | 60"W x 24"D x 36"H | 295 | \$2,806 | |



Cupboard Cubicle Storage (CCB)

| 48" W Cupboard Cubicle Storage (CCB) | | | | |
|--------------------------------------|--------------------|------|------------|--|
| Model Number | Description | Wgt. | List Price | |
| 18" Depth | | | | |
| CCB4829-18-MB-TL-H?P?N | 48"W x 18"D x 29"H | | \$2,184 | |
| CCB4836-18-MB-TL-H?P?N | 48"W x 18"D x 36"H | | \$2,425 | |
| CCB4842-18-MB-TL-H?P?N | 48"W x 18"D x 42"H | | \$2,533 | |
| 24" Depth | | | | |
| CCB4829-24-MB-TL-H?P?N | 48"W x 24"D x 29"H | | \$2,292 | |
| CCB4836-24-MB-TL-H?P?N | 48"W x 24"D x 36"H | | \$2,569 | |
| CCB4842-24-MB-TL-H?P?N | 48"W x 24"D x 42"H | 266 | \$2,708 | |



Cupboard Storage (CS)

| 72" W Cupboard Storage (CS) | | | | |
|-----------------------------|--------------------|------|------------|--|
| Model Number | Description | Wgt. | List Price | |
| 18" Depth | | | | |
| CS7229-18-MB-TL-H?P?N | 72"W x 18"D x 29"H | 241 | \$2,662 | |
| CS7236-18-MB-TL-H?P?N | 72"W x 18"D x 36"H | 287 | \$2,893 | |
| 24" Depth | | | | |
| CS7229-24-MB-TL-H?P?N | 72"W x 24"D x 29"H | 248 | \$2,800 | |
| CS7236-24-MB-TL-H?P?N | 72"W x 24"D x 36"H | 295 | \$3,068 | |

RUBIX WARDROBE STORAGE

Storage



General Specifications

Non-Locking Cabinet: Are constructed with 3/4" thick engineered wood side panels, sub-tops, vertical dividers and shelves. Backs are constructed with 3/4" thick engineered wood. Cabinet finish material is thermally fused laminate (TFL) case and doors/drawers, with 3mm PVC edging. Worksurface tops receive a high-pressure laminate surface. Cabinets 72"H or taller do not receive a worksurface top. **Other materials available:*** High-pressure laminate (HPL) case and doors/drawers edges and wood veneer case and doors/drawers with wood edges available and will incur an upcharge.

Frame: Steel frame is 11 gauge 1-1/4" square steel tubing. Frame assembly is attached to cabinet using wood screws. Mobile units are standard, using 75mm twin wheel locking casters that attach via threaded inserts on underside of the steel frame assembly. **Note: 54"H & 72"H units receive 100mm casters.*

* Freestanding steel support legs and mobile casters use the same threaded inserts and are interchangeable. Legs are available upon request for an upcharge.

* Locks are available for an upcharge.

Features of various cabinet configurations includes:

- Concealed door hinges and a variety of pulls available.
- Full extension drawers.
- TOTR Tote rails for use of both TOT03-_ and TOT06-_ Tote totes.

Finish: Standard powder coat on all metal parts is black; other colors may be specified.

Visit our website for Finish and Color Guide for choices.

| 36" W Wardrobe Storage (WRS) | | | |
|------------------------------|-------------|------|------------|
| Model Number | Description | Wgt. | List Price |
| 24" Depth | | | |

| | | | |
|------------------------|--------------------|-----|---------|
| WRS3672-24-MB-TT-H?P?N | 36"W x 24"D x 72"H | 244 | \$2,415 |
|------------------------|--------------------|-----|---------|

| 36" W Wardrobe Storage (WRS) | | | |
|------------------------------|-------------|------|------------|
| Model Number | Description | Wgt. | List Price |
| 24" Depth | | | |

| | | | |
|------------------------|--------------------|-----|---------|
| WRS3672-24-MB-LL-H?P?N | 36"W x 24"D x 72"H | 244 | \$2,473 |
|------------------------|--------------------|-----|---------|

| 36" W Wardrobe Storage (WRS) | | | |
|------------------------------|-------------|------|------------|
| Model Number | Description | Wgt. | List Price |
| 24" Depth | | | |

| | | | |
|------------------------|--------------------|-----|---------|
| WRS3672-24-MB-TL-H?P?N | 36"W x 24"D x 72"H | 244 | \$2,747 |
|------------------------|--------------------|-----|---------|

| Set Up Charges and Upcharges for Non-Standard and Custom Finishes | | |
|---|--|------------|
| Model Number | Description | List Price |
| Group 2 Powder Coat | Set up charge, per color, per order, for Group 2 Powder Coat | \$329 |
| Non-Standard PVC | Upcharge, per color, per order, for non-standard PVC | \$911 |

RUBIX COMBINATION STORAGE

Storage



General Specifications

Non-Locking Cabinet: Are constructed with 3/4" thick engineered wood side panels, sub-tops, vertical dividers and shelves. Backs are constructed with 3/4" thick engineered wood. Cabinet finish material is thermally fused laminate (TFL) case and doors/drawers, with 3mm PVC edging. Worksurface tops receive a high-pressure laminate surface. Cabinets 72"H or taller do not receive a worksurface top. **Other materials available:** High-pressure laminate (HPL) case and doors/drawers edges and wood veneer case and doors/drawers with wood edges available and will incur an upcharge.

Frame: Steel frame is 11 gauge 1-1/4" square steel tubing. Frame assembly is attached to cabinet using wood screws. Mobile units are standard, using 75mm twin wheel locking casters that attach via threaded inserts on underside of the steel frame assembly. **Note: 54"H & 72"H units receive 100mm casters.*

* Freestanding steel support legs and mobile casters use the same threaded inserts and are interchangeable. Legs are available upon request for an upcharge.

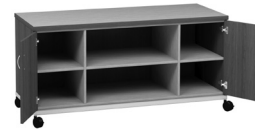
* Locks are available for an upcharge.

Features of various cabinet configurations includes:

- Concealed door hinges and a variety of pulls available.
- Full extension drawers.
- TOTR Tote rails for use of both TOT03-_ and TOT06-_ Tote totes.

Finish: Standard powder coat on all metal parts is black; other colors may be specified.

Visit our website for Finish and Color Guide for choices.



Cupboard with Open Storage (CSOS)



Cupboard with Open Storage (CSOS)



Cupboard with Deep Box Drawer & Lateral File Storage (CSDFSL)



Cupboard with 2 Lateral File Storage Drawers (CS2FSL)

| 60" W Cupboard with Open Storage (CSOS) | | | |
|---|--------------------|------|------------|
| Model Number | Description | Wgt. | List Price |
| 18" Depth | | | |
| CSOS6029-18-MB-TT-H?P?N | 60"W x 18"D x 29"H | 228 | \$2,089 |
| CSOS6036-18-MB-TT-H?P?N | 60"W x 18"D x 36"H | | \$2,328 |
| 24" Depth | | | |
| CSOS6029-24-MB-TT-H?P?N | 60"W x 24"D x 29"H | 236 | \$2,222 |
| CSOS6036-24-MB-TT-H?P?N | 60"W x 24"D x 36"H | | \$2,442 |

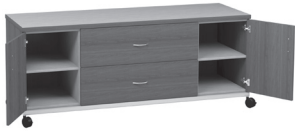
| 72" W Cupboard with Open Storage (CSOS) | | | |
|---|--------------------|------|------------|
| Model Number | Description | Wgt. | List Price |
| 18" Depth | | | |
| CSOS7229-18-MB-TT-H?P?N | 72"W x 18"D x 29"H | | \$2,329 |
| CSOS7236-18-MB-TT-H?P?N | 72"W x 18"D x 36"H | 271 | \$2,509 |
| 24" Depth | | | |
| CSOS7229-24-MB-TT-H?P?N | 72"W x 24"D x 29"H | | \$2,462 |
| CSOS7236-24-MB-TT-H?P?N | 72"W x 24"D x 36"H | 280 | \$2,900 |

| 60" W Cupboard with Deep Box Drawer & Lateral File Storage (CSDFSL) | | | |
|---|--------------------|------|------------|
| Model Number | Description | Wgt. | List Price |
| 18" Depth | | | |
| CSDFSL6029-18-MB-TT-H?P?N | 60"W x 18"D x 29"H | 253 | \$2,365 |
| 24" Depth | | | |
| CSDFSL6029-24-MB-TT-H?P?N | 60"W x 24"D x 29"H | 260 | \$2,482 |

| 60" W Cupboard with 2 Lateral File Storage Drawers (CS2FSL) | | | |
|---|--------------------|------|------------|
| Model Number | Description | Wgt. | List Price |
| 18" Depth | | | |
| CS2FSL6036-18-MB-TT-H?P?N | 60"W x 18"D x 36"H | 299 | \$2,572 |
| 24" Depth | | | |
| CS2FSL6036-24-MB-TT-H?P?N | 60"W x 24"D x 36"H | 308 | \$2,654 |

RUBIX COMBINATION STORAGE

Storage



Cupboard with Deep Box Drawer & Lateral File Storage (CSDFSL)

| 72" W Cupboard with Deep Box Drawer & Lateral File Storage (CSDFSL) | | | |
|---|--------------------|------|------------|
| Model Number | Description | Wgt. | List Price |
| 18" Depth | | | |
| CSDFSL7229-18-MB-TT-H?P?N | 72"W x 18"D x 29"H | 253 | \$2,605 |
| 24" Depth | | | |
| CSDFSL7229-24-MB-TT-H?P?N | 72"W x 24"D x 29"H | 260 | \$2,736 |



Cupboard with 2 Lateral File Storage Drawers (CS2FSL)

| 72" W Cupboard with 2 Lateral File Storage Drawers (CS2FSL) | | | |
|---|--------------------|------|------------|
| Model Number | Description | Wgt. | List Price |
| 18" Depth | | | |
| CS2FSL7236-18-MB-TT-H?P?N | 72"W x 18"D x 36"H | | \$2,736 |
| 24" Depth | | | |
| CS2FSL7236-24-MB-TT-H?P?N | 72"W x 24"D x 36"H | | \$2,900 |



Cupboard Storage with 2 Lateral File Drawers (CSFSL)

| 36" W Cupboard Storage with 2 Lateral File Drawers (CSFSL) | | | |
|--|--------------------|-----|------------|
| Model Number | Description | Wt. | List Price |
| 24" Depth | | | |
| CS2FSL3672-24-MB-TT-H?P?N | 36"W x 24"D x 72"H | 250 | \$2,808 |



Cupboard with Tote Rail Storage (CSTR)

| 36" W Cupboard with Tote Rail Storage (CSTOT) | | | |
|---|--------------------|-----|------------|
| Model Number | Description | Wt. | List Price |
| 24" Depth | | | |
| CSTOT3672-24-MB-TT-H?P?N | 36"W x 24"D x 72"H | 244 | \$2,510 |

**Note: Open Tote Rail Storage is incorrectly shown as 18"D in the anyspace Catalog. Rubix Open Tote Rail Storage cabinets are all 24"D.*

Note: 72"H units will have one or two fixed shelves. Units with no full vertical partition will have one fixed shelf. Units with a full vertical partition will have two fixed shelves. The remaining shelves are adjustable.

| Toto 3" Tote - 3"H x 12.25"W x 15.25"D | | |
|--|---------------|------------|
| Model No. | Description | List Price |
| TOT03-T01 | Translucent | \$38 |
| TOT03-T13 | Blue Heron | \$38 |
| TOT03-T15 | Falcon | \$38 |
| TOT03-T18 | Purple Martin | \$38 |
| TOT03-T21 | Goldfinch | \$38 |
| TOT03-T22 | Parakeet | \$38 |
| TOT03-T23 | Oriole | \$38 |
| TOT03-T24 | Cardinal | \$38 |
| TOT03-T27 | Blue Wren | \$38 |
| TOT03-T29 | Hummingbird | \$38 |

| Toto 6" Tote - 6"H x 12.25"W x 15.25"D | | |
|--|---------------|------------|
| Model No. | Description | List Price |
| TOT06-T01 | Translucent | \$52 |
| TOT06-T13 | Blue Heron | \$52 |
| TOT06-T15 | Falcon | \$52 |
| TOT06-T18 | Purple Martin | \$52 |
| TOT06-T21 | Goldfinch | \$52 |
| TOT06-T22 | Parakeet | \$52 |
| TOT06-T23 | Oriole | \$52 |
| TOT06-T24 | Cardinal | \$52 |
| TOT06-T27 | Blue Wren | \$52 |
| TOT06-T29 | Hummingbird | \$52 |

| Toto Tote Rails - For use in casework or as undermount rails for tables and desks | | |
|---|--|------------|
| Model No. | Description | List Price |
| TOTR-PR-T15 | Pair of Tote Rails, T15 Falcon | \$28 |
| TOTR-LH-T15 | Replacement Left Hand Tote Rail, Falcon | \$14 |
| TOTR-RH-T15 | Replacement Right Hand Tote Rail, T15 Falcon | \$14 |

| Set Up Charges and Upcharges for Non-Standard and Custom Finishes | | |
|---|--|------------|
| Model Number | Description | List Price |
| Group 2 Powder Coat | Set up charge, per color, per order, for Group 2 Powder Coat | \$329 |
| Non-Standard PVC | Upcharge, per color, per order, for non-standard PVC | \$911 |
| Sprayon Finish | Upcharge, per color, per order, for Sprayon finish | \$329 |

RUBIX COMBINATION STORAGE

Storage



Cupboard with Open Storage (CSOS)

| 60" W Cupboard with Open Storage (CSOS) | | | |
|---|--------------------|------|------------|
| Model Number | Description | Wgt. | List Price |
| 18" Depth | | | |
| CSOS6029-18-MB-LL-H?P?N | 60"W x 18"D x 29"H | 228 | \$2,662 |
| CSOS6036-18-MB-LL-H?P?N | 60"W x 18"D x 36"H | | \$3,011 |
| 24" Depth | | | |
| CSOS6029-24-MB-LL-H?P?N | 60"W x 24"D x 29"H | 236 | \$2,914 |
| CSOS6036-24-MB-LL-H?P?N | 60"W x 24"D x 36"H | | \$3,252 |



Cupboard with Open Storage (CSOS)

| 72" W Cupboard with Open Storage (CSOS) | | | |
|---|--------------------|------|------------|
| Model Number | Description | Wgt. | List Price |
| 18" Depth | | | |
| CSOS7229-18-MB-LL-H?P?N | 72"W x 18"D x 29"H | | \$2,965 |
| CSOS7236-18-MB-LL-H?P?N | 72"W x 18"D x 36"H | 271 | \$3,403 |
| 24" Depth | | | |
| CSOS7229-24-MB-LL-H?P?N | 72"W x 24"D x 29"H | | \$3,214 |
| CSOS7236-24-MB-LL-H?P?N | 72"W x 24"D x 36"H | 280 | \$3,727 |



Cupboard with Deep Box Drawer & Lateral File Storage (CSDFSL)

| 60" W Cupboard with Deep Box Drawer & Lateral File Storage (CSDFSL) | | | |
|---|--------------------|------|------------|
| Model Number | Description | Wgt. | List Price |
| 18" Depth | | | |
| CSDFSL6029-18-MB-LL-H?P?N | 60"W x 18"D x 29"H | 253 | \$2,876 |
| 24" Depth | | | |
| CSDFSL6029-24-MB-LL-H?P?N | 60"W x 24"D x 29"H | 260 | \$3,102 |



Cupboard with 2 Lateral File Storage Drawers (CS2FSL)

| 60" W Cupboard with 2 Lateral File Storage Drawers (CS2FSL) | | | |
|---|--------------------|------|------------|
| Model Number | Description | Wgt. | List Price |
| 18" Depth | | | |
| CS2FSL6036-18-MB-LL-H?P?N | 60"W x 18"D x 36"H | 299 | \$3,102 |
| 24" Depth | | | |
| CS2FSL6036-24-MB-LL-H?P?N | 60"W x 24"D x 36"H | 308 | \$3,397 |



Cupboard with Deep Box Drawer & Lateral File Storage (CSDFSL)

| 72" W Cupboard with Deep Box Drawer & Lateral File Storage (CSDFSL) | | | |
|---|--------------------|------|------------|
| Model Number | Description | Wgt. | List Price |
| 18" Depth | | | |
| CSDFSL7229-18-MB-LL-H?P?N | 72"W x 18"D x 29"H | 253 | \$3,179 |
| 24" Depth | | | |
| CSDFSL7229-24-MB-LL-H?P?N | 72"W x 24"D x 29"H | 260 | \$3,179 |



Cupboard with 2 Lateral File Storage Drawers (CS2FSL)

| 72" W Cupboard with 2 Lateral File Storage Drawers (CS2FSL) | | | |
|---|--------------------|------|------------|
| Model Number | Description | Wgt. | List Price |
| 18" Depth | | | |
| CS2FSL7236-18-MB-LL-H?P?N | 72"W x 18"D x 36"H | | \$3,569 |
| 24" Depth | | | |
| CS2FSL7236-24-MB-LL-H?P?N | 72"W x 24"D x 36"H | | \$3,873 |

RUBIX COMBINATION STORAGE

Storage



Cupboard Storage with 2 Lateral File Drawers (CSFSL)

| 36" W Cupboard Storage with 2 Lateral File Drawers (CSFSL) | | | |
|--|--------------------|-----|------------|
| Model Number | Description | Wt. | List Price |
| 24" Depth | | | |
| CS2FSL3672-24-MB-LL-H?P?N | 36"W x 24"D x 72"H | 250 | \$3,793 |



Cupboard with Tote Rail Storage (CSTR)

| 36" W Cupboard with Tote Rail Storage (CSTOT) | | | |
|---|--------------------|-----|------------|
| Model Number | Description | Wt. | List Price |
| 24" Depth | | | |
| CSTOT3672-24-MB-LL-H?P?N | 36"W x 24"D x 72"H | 244 | \$2,473 |

**Note: Open Tote Rail Storage is incorrectly shown as 18"D in the anyspace Catalog. Rubix Open Tote Rail Storage cabinets are all 24"D.*

| Toto 3" Tote - 3"H x 12.25"W x 15.25"D | | |
|--|---------------|------------|
| Model No. | Description | List Price |
| TOT03-T01 | Translucent | \$38 |
| TOT03-T13 | Blue Heron | \$38 |
| TOT03-T15 | Falcon | \$38 |
| TOT03-T18 | Purple Martin | \$38 |
| TOT03-T21 | Goldfinch | \$38 |
| TOT03-T22 | Parakeet | \$38 |
| TOT03-T23 | Oriole | \$38 |
| TOT03-T24 | Cardinal | \$38 |
| TOT03-T27 | Blue Wren | \$38 |
| TOT03-T29 | Hummingbird | \$38 |

| Toto 6" Tote - 6"H x 12.25"W x 15.25"D | | |
|--|---------------|------------|
| Model No. | Description | List Price |
| TOT06-T01 | Translucent | \$52 |
| TOT06-T13 | Blue Heron | \$52 |
| TOT06-T15 | Falcon | \$52 |
| TOT06-T18 | Purple Martin | \$52 |
| TOT06-T21 | Goldfinch | \$52 |
| TOT06-T22 | Parakeet | \$52 |
| TOT06-T23 | Oriole | \$52 |
| TOT06-T24 | Cardinal | \$52 |
| TOT06-T27 | Blue Wren | \$52 |
| TOT06-T29 | Hummingbird | \$52 |

| Toto Tote Rails - For use in casework or as undermount rails for tables and desks | | |
|---|--|------------|
| Model No. | Description | List Price |
| TOTR-PR-T15 | Pair of Tote Rails, T15 Falcon | \$28 |
| TOTR-LH-T15 | Replacement Left Hand Tote Rail, Falcon | \$14 |
| TOTR-RH-T15 | Replacement Right Hand Tote Rail, T15 Falcon | \$14 |

| Set Up Charges and Upcharges for Non-Standard and Custom Finishes | | |
|---|--|------------|
| Model Number | Description | List Price |
| Group 2 Powder Coat | Set up charge, per color, per order, for Group 2 Powder Coat | \$329 |
| Non-Standard PVC | Upcharge, per color, per order, for non-standard PVC | \$911 |
| Sprayon Finish | Upcharge, per color, per order, for Sprayon finish | \$329 |

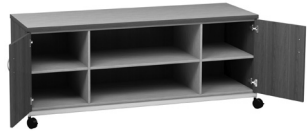
RUBIX COMBINATION STORAGE

Storage



Cupboard with Open Storage (CSOS)

| 60" W Cupboard with Open Storage (CSOS) | | | |
|---|--------------------|------|------------|
| Model Number | Description | Wgt. | List Price |
| 18" Depth | | | |
| CSOS6029-18-MB-TL-H?P?N | 60"W x 18"D x 29"H | 228 | \$2,240 |
| CSOS6036-18-MB-TL-H?P?N | 60"W x 18"D x 36"H | | \$2,494 |
| 24" Depth | | | |
| CSOS6029-24-MB-TL-H?P?N | 60"W x 24"D x 29"H | 236 | \$2,378 |
| CSOS6036-24-MB-TL-H?P?N | 60"W x 24"D x 36"H | | \$2,618 |



Cupboard with Open Storage (CSOS)

| 72" W Cupboard with Open Storage (CSOS) | | | |
|---|--------------------|------|------------|
| Model Number | Description | Wgt. | List Price |
| 18" Depth | | | |
| CSOS7229-18-MB-TL-H?P?N | 72"W x 18"D x 29"H | | \$2,497 |
| CSOS7236-18-MB-TL-H?P?N | 72"W x 18"D x 36"H | 271 | \$2,689 |
| 24" Depth | | | |
| CSOS7229-24-MB-TL-H?P?N | 72"W x 24"D x 29"H | | \$2,639 |
| CSOS7236-24-MB-TL-H?P?N | 72"W x 24"D x 36"H | 280 | \$3,108 |



Cupboard with Deep Box Drawer & Lateral File Storage (CSDFSL)

| 60" W Cupboard with Deep Box Drawer & Lateral File Storage (CSDFSL) | | | |
|---|--------------------|------|------------|
| Model Number | Description | Wgt. | List Price |
| 18" Depth | | | |
| CSDFSL6029-18-MB-TL-H?P?N | 60"W x 18"D x 29"H | 253 | \$2,838 |
| 24" Depth | | | |
| CSDFSL6029-24-MB-TL-H?P?N | 60"W x 24"D x 29"H | 260 | \$2,979 |



Cupboard with 2 Lateral File Storage Drawers (CS2FSL)

| 60" W Cupboard with 2 Lateral File Storage Drawers (CS2FSL) | | | |
|---|--------------------|------|------------|
| Model Number | Description | Wgt. | List Price |
| 18" Depth | | | |
| CS2FSL6036-18-MB-TL-H?P?N | 60"W x 18"D x 36"H | 299 | \$3,087 |
| 24" Depth | | | |
| CS2FSL6036-24-MB-TL-H?P?N | 60"W x 24"D x 36"H | 308 | \$3,190 |



Cupboard with Deep Box Drawer & Lateral File Storage (CSDFSL)

| 72" W Cupboard with Deep Box Drawer & Lateral File Storage (CSDFSL) | | | |
|---|--------------------|------|------------|
| Model Number | Description | Wgt. | List Price |
| 18" Depth | | | |
| CSDFSL7229-18-MB-TL-H?P?N | 72"W x 18"D x 29"H | 253 | \$3,129 |
| 24" Depth | | | |
| CSDFSL7229-24-MB-TL-H?P?N | 72"W x 24"D x 29"H | 260 | \$3,286 |



Cupboard with 2 Lateral File Storage Drawers (CS2FSL)

| 72" W Cupboard with 2 Lateral File Storage Drawers (CS2FSL) | | | |
|---|--------------------|------|------------|
| Model Number | Description | Wgt. | List Price |
| 18" Depth | | | |
| CS2FSL7236-18-MB-TL-H?P?N | 72"W x 18"D x 36"H | | \$3,286 |
| 24" Depth | | | |
| CS2FSL7236-24-MB-TL-H?P?N | 72"W x 24"D x 36"H | | \$3,480 |

RUBIX COMBINATION STORAGE

Storage



Cupboard Storage with 2 Lateral File Drawers (CSFSL)

| 36" W Cupboard Storage with 2 Lateral File Drawers (CSFSL) | | | |
|--|--------------------|-----|------------|
| Model Number | Description | Wt. | List Price |
| 24" Depth | | | |
| CS2FSL3672-24-MB-TL-H?P?N | 36"W x 24"D x 72"H | 250 | \$2,993 |



Cupboard with Tote Rail Storage (CSTR)

| 36" W Cupboard with Tote Rail Storage (CSTOT) | | | |
|---|--------------------|-----|------------|
| Model Number | Description | Wt. | List Price |
| 24" Depth | | | |
| CSTOT3672-24-MB-TL-H?P?N | 36"W x 24"D x 72"H | 244 | \$2,592 |

**Note: Open Tote Rail Storage is incorrectly shown as 18"D in the anyspace Catalog. Rubix Open Tote Rail Storage cabinets are all 24"D.*

| Toto 3" Tote - 3"H x 12.25"W x 15.25"D | | |
|--|---------------|------------|
| Model No. | Description | List Price |
| TOT03-T01 | Translucent | \$38 |
| TOT03-T13 | Blue Heron | \$38 |
| TOT03-T15 | Falcon | \$38 |
| TOT03-T18 | Purple Martin | \$38 |
| TOT03-T21 | Goldfinch | \$38 |
| TOT03-T22 | Parakeet | \$38 |
| TOT03-T23 | Oriole | \$38 |
| TOT03-T24 | Cardinal | \$38 |
| TOT03-T27 | Blue Wren | \$38 |
| TOT03-T29 | Hummingbird | \$38 |

| Toto 6" Tote - 6"H x 12.25"W x 15.25"D | | |
|--|---------------|------------|
| Model No. | Description | List Price |
| TOT06-T01 | Translucent | \$52 |
| TOT06-T13 | Blue Heron | \$52 |
| TOT06-T15 | Falcon | \$52 |
| TOT06-T18 | Purple Martin | \$52 |
| TOT06-T21 | Goldfinch | \$52 |
| TOT06-T22 | Parakeet | \$52 |
| TOT06-T23 | Oriole | \$52 |
| TOT06-T24 | Cardinal | \$52 |
| TOT06-T27 | Blue Wren | \$52 |
| TOT06-T29 | Hummingbird | \$52 |

| Toto Tote Rails - For use in casework or as undermount rails for tables and desks | | |
|---|--|------------|
| Model No. | Description | List Price |
| TOTR-PR-T15 | Pair of Tote Rails, T15 Falcon | \$28 |
| TOTR-LH-T15 | Replacement Left Hand Tote Rail, Falcon | \$14 |
| TOTR-RH-T15 | Replacement Right Hand Tote Rail, T15 Falcon | \$14 |

| Set Up Charges and Upcharges for Non-Standard and Custom Finishes | | |
|---|--|------------|
| Model Number | Description | List Price |
| Group 2 Powder Coat | Set up charge, per color, per order, for Group 2 Powder Coat | \$329 |
| Non-Standard PVC | Upcharge, per color, per order, for non-standard PVC | \$911 |
| Sprayon Finish | Upcharge, per color, per order, for Sprayon finish | \$329 |