



Cirrus eSports Consoles

eSports







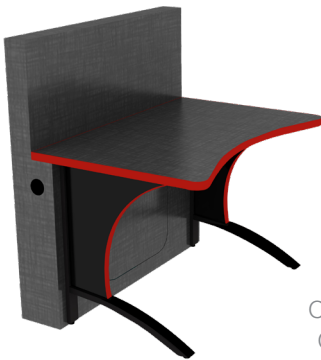
STATEMENT OF LINE

Curved Console



CESCC-C3450-54CRV-L-29
(1/8" radiused corners with an overall 62° radius)

Cabinet Console



CESCC-C4040V-L-29
Concave Work Surface
(3" radius on corners)

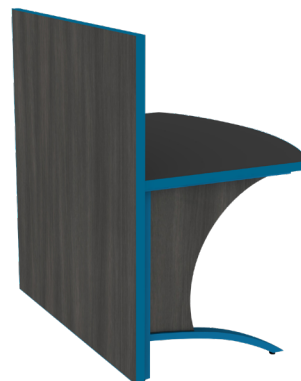


CESCC-C4044X-L-29
Convex Work Surface
(3" radius on corners)

Panel Console



CESPC-C3344X-L-29
Convex Work Surface
(3" radius on corners)



CESPC-C3344X-L-29
Convex Work Surface (back)
(3" radius on corners)



WIRE MANAGEMENT



Cabinet Console: Wire box door opening is 20"W x 17-1/4"H. A grommet is provided in the top to conceal and pass cabling into the cabinet.

Curved Cabinet Console: Assembly provides concealed wire passage from table to table.

Panel Console: 3" deep powder coated steel wire channel connects to the inside front of the back panel to conceal wires. Back Panel mounting surface is suitable for attaching the mount for a flat screen monitor. (Monitor and mount not included.)

Mounting a monitor to Cirrus eSports Consoles: You drill and bolt your mounting bracket for your Flat Screen Monitor to the outside face of your Cirrus Console back panel. Follow the mounting instructions for your monitor. Generally speaking, the monitor size should not exceed the width of your Cirrus eSports Console.

Features & Benefits:



CESSC-C4040V-L-29

Cirrus eSports Consoles are designed to support your gaming facilities, working seamlessly within your infrastructure to provide the ultimate club or team experience. Paired with ergonomic adjustable height chairs, like Vertagear Gaming Chairs ensures a comfortable and healthy posture for gamers while they compete!

- Specifically designed to incorporate eSports wiring infrastructure
- 3 Models available to support the needs of eSports facilities. Cabinet, Panel and Curved.
- Our Cabinet Back model features top of the line wire management, designed to create runs for 3 v 3, 6 v 6 competitions seamlessly. The Panel back model, is a light version of the latter while still offering cable management. Our Curved model is unique to the eSports arena, as it creates more of a dome feeling, keeping gamers in their own space from the audience while still allowing for wire management.
- Each model provides a sturdy spectator facing panel to mount monitors, for fans to cheer on their home team
- 44" W worksurface to display gaming PC's and leave elbow room for gamers

To Order Specify

Work Surface: Choose from our selection of high pressure laminate options.

Steel End Frames: Choose from our selection of powder coats:

Group I: 809 Silver, 112 White, 109 Cream, 208 Putty, 304 Dove Grey, 407 Stone, 912 Black, 902 Black Wrinkle.

Group II Frame (up-charge): 5003 Navy, 808 Nickel, 405 Charcoal, 621 Goldfinch, 622 Parakeet, 613 Blue Heron, 627 Blue Wren, 629 Hummingbird, 618 Purple Martin, 624 Cardinal.

Cabinet Console/Back Panel: Choose from our selection of high pressure laminate options.

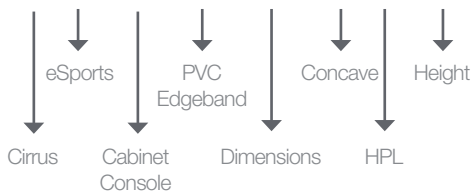
Edges: Choose from our selection of PVC edgebands.

See **mediatechnologie's** finish choices at <https://www.mediatechnologies.com/resources/finishes>

Connectivity Options: See **mediatechnologie's** Connect Brochure for our Connectivity options at www.mediatechnologies.com.

Model Number Breakdown:

CESSC-C4040V-L-29



Overall Dimensions:

Cabinet Console:

Depth: Convex: 40"; Concave: 34.75"
 Width: 44"
 Worksurface height: 29"
 Overall height: 48"

Curved Console:

Depth: 34"
 Width: 49-11/16"
 Worksurface height: 29"
 Overall height: 48"

Back Panel:

Depth: Convex: 36.5"; Concave: 31.25"
 Width: 44"
 Worksurface height: 29"
 Overall height: 48"

Options

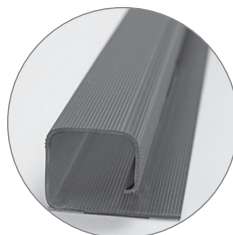
Vertical Wire Management



Cable Grip



Cable Channel



Grommets



Bag Hook

