



## VINYL ANTHOLOGY II

---

**+ POLYURETHANE**





**SKETCH**  
SC-026 Cobblestone



**VOYAGER**  
VO-016 Charcoal



**KEY LARGO**  
KL-026 Quarry



**ZIP**  
ZP-006 Fog



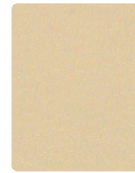
**VOYAGER**  
VO-026 Flint



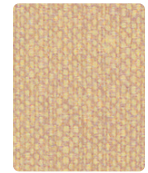
**VOYAGER**  
VO-046 Zinc



**SILVERWEAVE**  
SW-017 Doe



**FLORENTINO**  
FT-017 Biscuit



**KEY LARGO**  
KL-027 Sand



**SKETCH**  
SC-036 Glacier



**ETCH**  
EH-016 Charcoal



**FLORENTINO**  
FT-026 Dove



**KEY LARGO**  
KL-020 Sandstone



**ZIP**  
ZP-017 Chamois



**FLORENTINO**  
FT-012 Dijon



**SILVERWEAVE**  
SW-016 Cadet



**ZIP**  
ZP-026 Storm



**SILVERWEAVE**  
SW-026 Zinc



**SCORE**  
SE-010 Bark



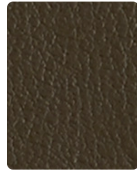
**VOYAGER**  
VO-017 Mineral



**SKETCH**  
SC-017 Flax



**ESSENCE**  
ES-006 Charcoal



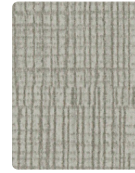
**FLORENTINO**  
FT-020 Bark



**SCORE**  
SE-016 Slate



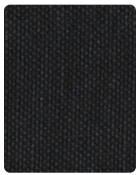
**SKETCH**  
SC-016 Cliff



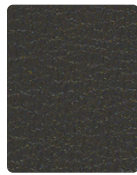
**SCORE**  
SE-037 Pumice



**KEY LARGO**  
KL-002 Gold Coast



**SILVERWEAVE**  
SW-006 Graphite



**FLORENTINO**  
FT-016 Slate



**KEY LARGO**  
KL-006 Graphite



**SILVERWEAVE**  
SW-020 Mica



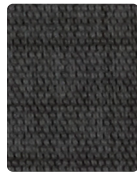
**VOYAGER**  
VO-010 Burnt Umber



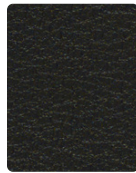
**SCORE**  
SE-020 Pecan



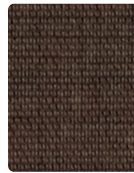
**VOYAGER**  
VO-006 Inkwell



**SKETCH**  
SC-006 Charcoal



**FLORENTINO**  
FT-006 Jet



**SKETCH**  
SC-000 Espresso

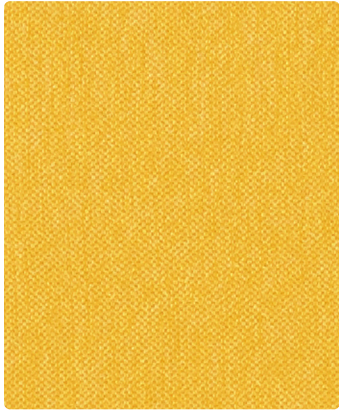


**FLORENTINO**  
FT-030 Mocha

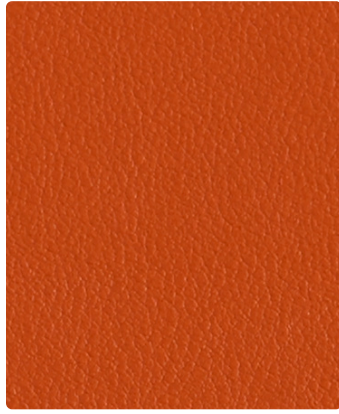


**KEY LARGO**  
KL-010 Toast

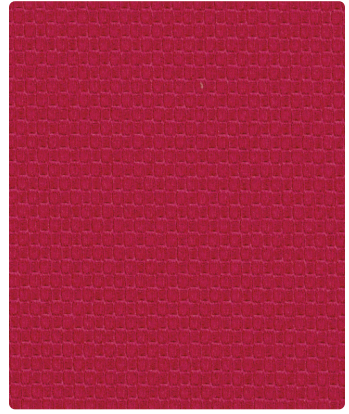
Additional colors are available. Please refer to the Mayer Fabrics website.



**SILVERWEAVE**  
SW-012 Daylily



**FLORENTINO**  
FT-029 Mango



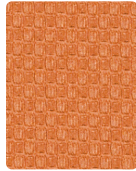
**ETCH**  
EH-001 Flame



**VOYAGER**  
VO-002 Gold



**SKETCH**  
SC-002 Chamois



**ETCH**  
EH-009 Mango



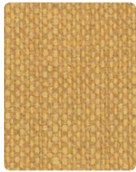
**ZIP**  
ZP-001 Punch



**SKETCH**  
SC-001 Poppy



**SCORE**  
SE-005 Violet



**KEY LARGO**  
KL-012 Wheat



**FLORENTINO**  
FT-022 Caramel



**SILVERWEAVE**  
SW-039 Bittersweet



**ESSENCE**  
ES-009 Persimmon



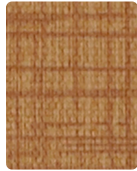
**SCORE**  
SE-001 Rouge



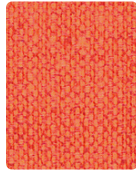
**KEY LARGO**  
KL-015 Crocus



**ESSENCE**  
ES-002 Sunray



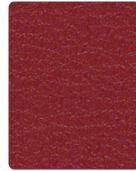
**SKETCH**  
SC-019 Caramel



**KEY LARGO**  
KL-009 Tangerine



**SILVERWEAVE**  
SW-011 Poppy



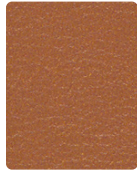
**FLORENTINO**  
FT-001 Scarlet



**VOYAGER**  
VO-005 Amethyst



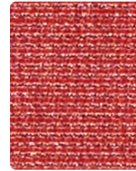
**FLORENTINO**  
FT-032 Jonquil



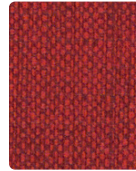
**FLORENTINO**  
FT-019 Sepia



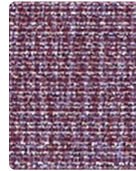
**SCORE**  
SE-009 Spice



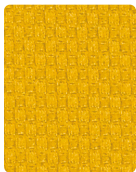
**ESSENCE**  
ES-011 Tomato



**KEY LARGO**  
KL-001 Crimson



**ESSENCE**  
ES-005 Plum



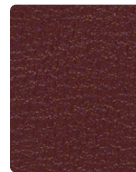
**ETCH**  
EH-002 Marigold



**VOYAGER**  
VO-019 Sepia



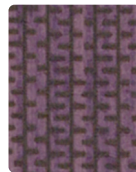
**SKETCH**  
SC-009 Tangerine



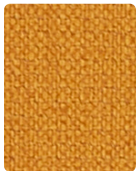
**FLORENTINO**  
FT-009 Chili



**SILVERWEAVE**  
SW-001 Cranberry



**ZIP**  
ZP-015 Aubergine



**KEY LARGO**  
KL-022 Jonquil



**SILVERWEAVE**  
SW-029 Amber



**SILVERWEAVE**  
SW-009 Cayenne



**VOYAGER**  
VO-001 Nutmeg

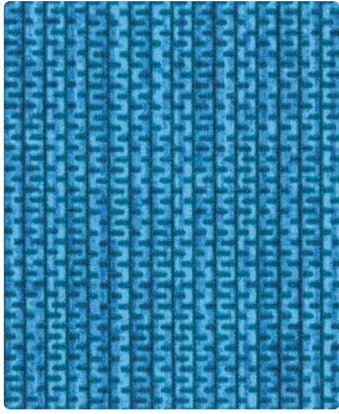


**SKETCH**  
SC-011 Paprika

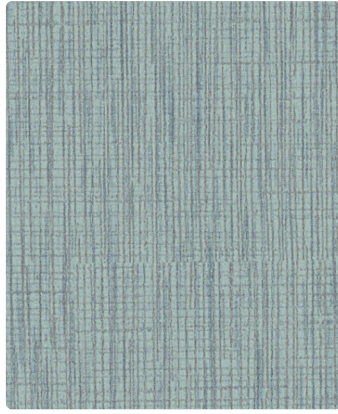


**SKETCH**  
SC-005 Violet

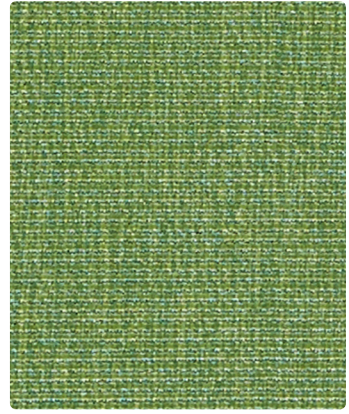
Additional colors are available. Please refer to the Mayer Fabrics website.



**ZIP**  
ZP-024 Denim



**SCORE**  
SE-033 Aquamarine



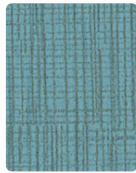
**ESSENCE**  
ES-003 Hedge



**ETCH**  
EH-014 Denim



**FLORENTINO**  
FT-034 Bluejay



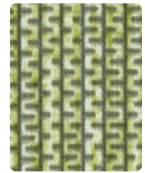
**SCORE**  
SE-034 Turquoise



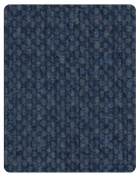
**SKETCH**  
SC-024 Mist



**FLORENTINO**  
FT-033 Willow



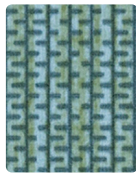
**ZIP**  
ZP-003 Spring



**KEY LARGO**  
KL-004 Ultramarine



**SILVERWEAVE**  
SW-024 Cobalt



**ZIP**  
ZP-004 Sea



**VOYAGER**  
VO-023 Turquoise



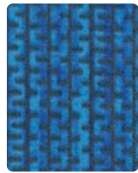
**SILVERWEAVE**  
SW-053 Spring



**SILVERWEAVE**  
SW-013 Willow



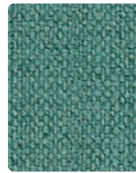
**SILVERWEAVE**  
SW-004 Indigo



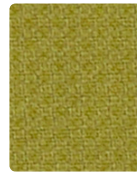
**ZIP**  
ZP-034 Cobalt



**SILVERWEAVE**  
SW-044 Calypso



**KEY LARGO**  
KL-024 Nassau



**KEY LARGO**  
KL-033 Pear



**ETCH**  
EH-003 Lime



**SKETCH**  
SC-004 Indigo



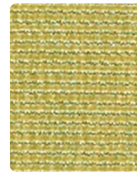
**SCORE**  
SE-004 Indigo



**FLORENTINO**  
FT-044 Turquoise



**ESSENCE**  
ES-023 Sea



**ESSENCE**  
ES-013 Citron



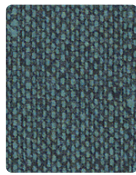
**SKETCH**  
SC-013 Basil



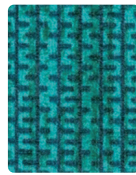
**FLORENTINO**  
FT-004 Sapphire



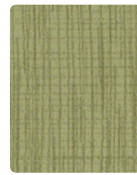
**SKETCH**  
SC-014 Royal



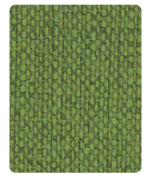
**KEY LARGO**  
KL-014 Aegean



**ZIP**  
ZP-013 Peacock



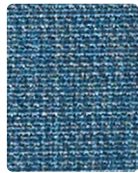
**SCORE**  
SE-003 Basil



**KEY LARGO**  
KL-013 Palm



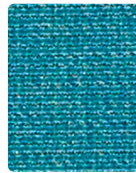
**VOYAGER**  
VO-024 Prussian



**ESSENCE**  
ES-004 Ink



**VOYAGER**  
VO-034 Aegean



**ESSENCE**  
ES-033 Peacock



**VOYAGER**  
VO-013 Emerald



**SILVERWEAVE**  
SW-003 Jade

Additional colors are available. Please refer to the Mayer Fabrics website.

# TECHNICAL INFORMATION

## Vinyl Anthology II + Polyurethane | Interactive card

Pattern 54"	Content and Backing	Certifications	Weight/ Linear Yd.	Pattern Repeat	Finish	Abrasion Wyzenbeek	Light- Fastness	Flammability	Cleaning Code
<b>ESSENCE</b> Directional	80% Vinyl - Phthalate Free face, 20% Polyester backing	GREENGUARD	30 oz.	None	Soil & Stain Resistant Top Coat with Ink Resistant Technology	250,000^ Double Rubs	200 hours	Cal. 117-2013 NFPA 260/UFAC Class 1	WS, BC, CFC
<b>ETCH</b> Directional	78% Vinyl - Phthalate Free face, 22% Polyester backing	GREENGUARD	30 oz.	None	Soil & Stain Resistant Top Coat with Ink Resistant Technology	100,000^ Double Rubs	300 hours	Cal. 117-2013 NFPA 260/UFAC Class 1 FMVSS 302	BC, CFC
<b>FLORENTINO</b>	85% Vinyl - Phthalate Free face, 15% Polyester backing	GREENGUARD	28 oz.	None	Soil & Stain Resistant Top Coat with Ink Resistant Technology	651,000^ Double Rubs	650 hours	Cal. 117-2013 NFPA 260/UFAC Class 1 FMVSS 302	BC, CFC
<b>KEY LARGO</b> Directional	85% Vinyl - Phthalate Free face, 15% Polyester backing	GREENGUARD	28 oz.	None	Soil & Stain Resistant Top Coat with Ink Resistant Technology	250,000^ Double Rubs	650 hours	Cal. 117-2013 NFPA 260/UFAC Class 1 FMVSS 302	BC, CFC
<b>SCORE</b> Directional	45% Polyurethane Polycarbonate - PVC Free face, 55% Polyester backing	GREENGUARD	20 oz.	None	WRITE AWAY® - Soil & Stain Resistant Top Coat with Ink Resistant Technology	250,000^ Double Rubs	200 hours	Cal. 117-2013 NFPA 260/UFAC Class 1	BC, CFC
<b>SILVERWEAVE</b> Directional	81% Vinyl face, 19% Hi-Loft Polyester backing	GREENGUARD	30 oz.	None	Soil & Stain Resistant Top Coat	930,000^ Double Rubs	1000 hours	Cal. 117-2013 NFPA 260/UFAC Class 1	BC, CFC
<b>SKETCH</b> Directional	65% Vinyl - Phthalate Free face, 35% Polyester backing	GREENGUARD	32 oz.	Non- Matching	Soil & Stain Resistant Top Coat with Ink Resistant Technology	1,150,000^ Double Rubs	500 hours	Cal. 117-2013 NFPA 260/UFAC Class 1 FMVSS 302	WS, BC, CFC
<b>VOYAGER</b>	62% Polyurethane Polycarbonate - PVC Free/ 3% Silicone face, 35% Polyester backing	GREENGUARD	19 oz.	None	WRITE AWAY® - Soil & Stain Resistant Top Coat with Ink Resistant Technology	755,000^ Double Rubs	200 hours	Cal. 117-2013 NFPA 260/UFAC Class 1	WS, BC, CFC
<b>ZIP</b> Directional	78% Vinyl - Phthalate Free face, 22% Polyester backing	GREENGUARD	26 oz.	None	Soil & Stain Resistant Top Coat	100,000^ Double Rubs	1000 hours	Cal. 117-2013 NFPA 260/UFAC Class 1	BC, CFC

### REDUCED ENVIRONMENTAL IMPACT

These products are GREENGUARD Certified for low chemical and particle emissions to UL standard UL 2818 and may contribute to LEED certification.

No FR Additives

**Essence, Etch, Florentino, Key Largo, Score, Sketch, Voyager, Zip**  
No Antimicrobial/Antibacterial Additives

### CARE AND CLEANING INFORMATION

WS: Water/Solvent Cleaner CFC: Coated Fabrics Cleaning – Refer to Mayer website for complete cleaning info.

Bleach Cleanable – 1 part bleach, 9 parts water = 10% bleach, 90% water solution. **Do not clean/disinfect fabric for longer than 10 minutes using the 10% bleach solution. Always rinse promptly with clean water after applying the bleach solution. Failure to do so will void any and all warranties.**

### DYE TRANSFER DISCLAIMER

Certain clothing and accessory dyes (such as those used on denim jeans) may migrate to lighter colors. This phenomenon is increased by humidity and temperature and is irreversible. Mayer Fabrics will not assume responsibility for dye transfer caused by external contaminants. Please check compatibility when using this product in combination with painted or varnished surfaces.

### ADDITIONAL INFORMATION

^Abrasion test results exceeding ACT Performance Guidelines are not an indicator of product lifespan. Multiple factors affect fabric durability and appearance retention. Warranty: Please refer to the Mayer website for warranty information by pattern.

Custom Colors: All patterns can be custom colored. Minimum yardage applies.

Digital Swatch Card Color Matching: Due to color variations on different monitors and color printers, actual swatch colors may vary slightly. Please request a memo sample from Mayer Fabrics to ensure proper color representation. Complete and current product information available at [mayerfabrics.com](http://mayerfabrics.com).



These fabrics meet or exceed these ACT performance guidelines.  
\*Certification Marks owned by ACT®

©2022  
MTVA2PUCD MF0122

For product grades please visit [www.mediatechnologies.com](http://www.mediatechnologies.com).



† 231.861.2194 [www.mediatechnologies.com](http://www.mediatechnologies.com)



† 231.861.2194  
[www.mtcontract.com](http://www.mtcontract.com)

**TexTile3D™**  
by Mayer Fabrics

For additional colors, pre-approved patterns, grade-ins, samples and specifications, please refer to the Mayer TexTile3D link.

**MAYER FABRICS**

T 800.428.4415 [mayerfabrics.com](http://mayerfabrics.com)  
500 S. Kitley Ave. Indianapolis, IN 46219