

- Café
- Commons
- Classroom
- Makerspace

# anyspace Commons





2



## Work. Study. Socialize. Learn.

A Learning Commons is a space designed to bring students together in a safe, inclusive and welcoming environment to learn, share and integrate their experiences. Our **anyspace Commons** brochure is designed to provide you with useful ideas for populating commons spaces to meet the diverse abilities and learning styles of your individuals, teams and groups.

Comfortable furniture for both individuals and for group study is *de rigueur* for today's commons space. Plus, users also need to be able to arrange and "customize" the space to meet their immediate needs. Our range of lounge and mobile furniture gives you loads of possibilities that will keep your commons space fresh and functional for years to come.

**mediatechnologies** can help you plan and integrate power and connectivity options in many of our furniture items so your users can be connected as individuals or as a group. We offer many in-surface and external connectivity options.

# Commons



## Not just furniture.

Need a little help planning your commons space? Want to see what it looks like with the furniture in it? Would you like our CAD blocks so you can draw your own plans? **mediatechnologies** offers 2D and 3D space planning and we can make our CAD blocks available to you. Let us help you plan the space that you want. Heck, if you like the space, maybe you'll buy our furniture too. It's really good furniture. You will really like it. We will be really happy when you buy it, too.

Use **mediatechnologies** and **anspace Commons** as your resources for an uncommonly great commons space.

## Above:

Commons space above features **Full Time 30° Curve** ottomans with **Timetable** occasional tables and **Dotti** stools, mobile **Hannah** chairs with mobile **Derby** tables, **Full Time** mobile ottomans with **Derby** tables, **Push Pop** stools with **Derby** café tables, **Engage** lounge chairs with **Timetable** occasional tables, **Shirley** booth seating with **Derby** tables and **Hannah** mobile chairs, **Hannah** stools and **Derby** café tables and **Cheesewall** privacy wall.



**Above:**

Mobile **Derby** tables with mobile **Hannah** chairs, **Full Time** mobile round ottomans with **Derby** tables, **Push Pop** stools with **Derby** café tables, **Shirley** booth seating with **Derby** tables and **Hannah** mobile chairs. **Hannah** stools with **Derby** café tables.

**Below:**

Mobile **Derby** tables with mobile **Hannah** chairs, **Full Time 30°** ottomans with **Timetable** occasional tables and a **Cheesewall** privacy wall. **Shirley** booth seating with **Derby** tables and **Hannah** mobile chairs. **Hannah** stools with **Derby** café tables (back left).





### Café. Cafeteria. Commons.

Often, commons spaces are accompanied by relaxed food and drink restrictions. The casual nature and flexibility of commons spaces make the incorporation of café and cafeteria spaces an obvious option.

#### Above:

**Smile Stools** shown with **Orbit** round café height tables.

#### Below:

**Orbit** round tables with **Full Time Jr.** square ottomans, **Smile** chairs with **Orbit** square tables and **Smile** stools lined up against a café height counter.

5





6

**Above:**

A large collection of **Smile** chairs shown in a café setting.

**Below:**

**Shirley** booths shown with **Grootable** fixed base tables, fixed-base **Toadstools** and two freestanding **Toadstools**.





**Above:**

**Hannah** stools with **Orbit** round tables in the café commons of an ultimate soccer arena.

**Below:**

**Arc** chairs with **Orbit** round tables and **Arc** stools with **Orbit** square café height tables.





8

### Multi-use. Multi-possibility.

Commons spaces are welcoming and comfortable environments for studying, working and socializing. Populating the space with a variety of furniture that encourages both individual and collaborative use covers all the bases.

#### Above:

Custom **Full Time Halfbacks** with **Full Time** round ottoman, **CBLOX** and **Full Time Ottobles** with custom **Full Time** triangle ottomans in the background.

#### Below:

A makerspace commons of **Work+Box Island** tables with tote storage accompanied by **Carlo** stools, **Romak** chairs and **BLOX** seating.







**Above:**

A small herd of mobile **RoJon** tablet arm stools in their native habitat.

**Below:**

**Hannah** stools surround curved and straight **Indy** tables paired with curved and straight **Full Time Halfbacks**. Within the kit is an **Engage** lounge chair, **PBLOX**, a **Full Time Jr.** round ottoman and a **Concierge** tech cart.





10

## Lounge. Learning. Commons.

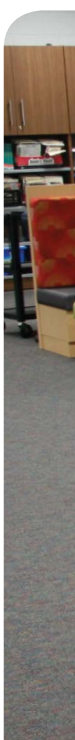
Comfortable, versatile lounge furniture is perfect for a learning environment commons. Room to spread out or room to get together – it's all here.

### Above:

**Drift** curved shelving units with **Full Time 30°** curved ottomans, **Orbit** tables with **Push Pop** stools. **Fred**, **BLOX** soft seating and **Full Time** mobile rounds surround a **Full Time Ottable**.

### Right:

To the right is an example of our **Crayon** multimedia sharing table paired with a **Pocket Café Counter** set with **Bella** stools.





**Above:**

**Crayon** multimedia sharing table paired with **Toadstool** seating, **Rockford Raetsel** tables with mobile **Carlo** stools.

**Right:**

An **Orbit-base Crayon** table is shown to the right with a **Pocket Lounge** set.

**Below:**

**Shirley** booths enclose a group of **Derby X-base** tables and mobile **Duo Connector** stools.





### Shared space. Different Users.

Students of all ages can share the same commons space comfortably while working solo or in groups. There's a little something for everyone in these multi-purpose spaces.

#### Above:

**Full Time Round**, **Crescent** and **30° Curve** ottoman seating with **Duo** coffee tables, **Push Pops** and **Derby** café height tables in the background.





**Top Right:**

Four armless **Engage** lounge chairs surround a **Full Time** round ottoman. In the background, **Hannah** chairs are paired with **Derby** T-base tables.

**Below:**

**Engage Lounge** chairs with **Orbit** round occasional tables, **Full Time** curved ottomans with **Forum Work** tables, and **Deuce Lounge** and **Deuce Café Counter** seating with **Derby** square tables, **Full Time** round mobile ottomans and **Push Pops**. A **Work+Box Island** with **Carlo** stools (in the background).





**Above:**

**Duo Lounge** seating with **Duo Connector** table, **Orbit** square tables and **Full Time** round mobile ottomans.

**Below:**

**Orbit** lightbulb top tables with **Toadstool** seating. Each table is fitted with an in-surface, eight-outlet power distribution box.





### Commons 1-2-3.

Whether your commons space is a large, dedicated or multi-use area or a nook carved out of a library space, we can help you bring it to its fullest potential. Through creative furniture solutions and space planning expertise, we are dedicated to your satisfaction and success.

Elementary School commons spaces don't always have the same space requirements as their higher education counterparts. Spaces where students can gather for informal group work can be created just about anywhere.

#### Above:

A **Work+Box Island** table with cabinet space and accompanying mobile **Carlo** stools.

#### Below:

**Rockford Raetsel** tables with an assortment of **BLOX Cylinders**, **Triangles**, **Cubes** and **Pacman** soft seating items.









## Sharing. Collaboration.

Furniture designed for getting groups of people and ideas together. The name-of-the-game today is collaboration and sharing.

### Top Left:

The MediaSharing Theater: **Crayon** multimedia sharing table, **Toadstool** seating, **Full Time 30° Curve** and **Rectangular** ottomans, and **Cirrus Curved** and **Rectangular** tables.

### Left:

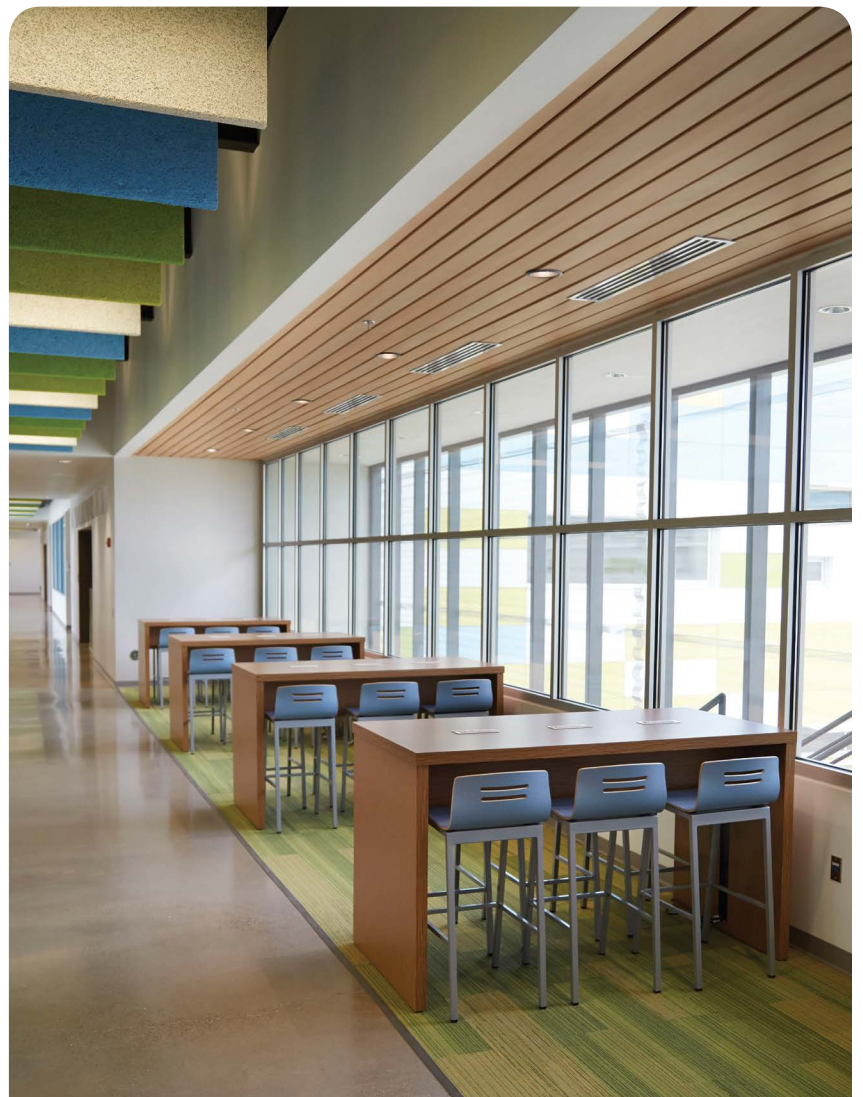
**Duo Café Counter** set with **Toadstool** seating and **Duo Coffee Tables**.

### Top Right:

**Shirley** booth seating with **Derby** tables.

### Right:

Connectivity-ready **Downtown** tables with **Bella** stools.





### Group Space. Work Space. Makerspace.

Whether its finger paint or robotics, the makerspace is where the magic happens. The traditional art room and shop class come together in this commons space; get your hands dirty and create!

#### Above:

**Work+Box Island** with **Carlo** stools and **Romak** chairs surround a **GTX** table with a butcher block top.

#### Left:

An **Edison** table with a butcher block top and Capri Blue powder coat.



**Above:**

Mobile **Carlo** stools surround a grouping of **Rockford Pick** tables and **Work+Box Islands**.

**Below:**

**Derby** T-base tables are paired with **Hannah** chairs in the learning area to the left while **Kirby** tables are surrounded by **Hannah** stools on the right.





## Work Space. Gather Space. Chill Space.

Commons spaces need to be outfitted for individual learning, collaborative efforts or just plain lounging around.

### Above:

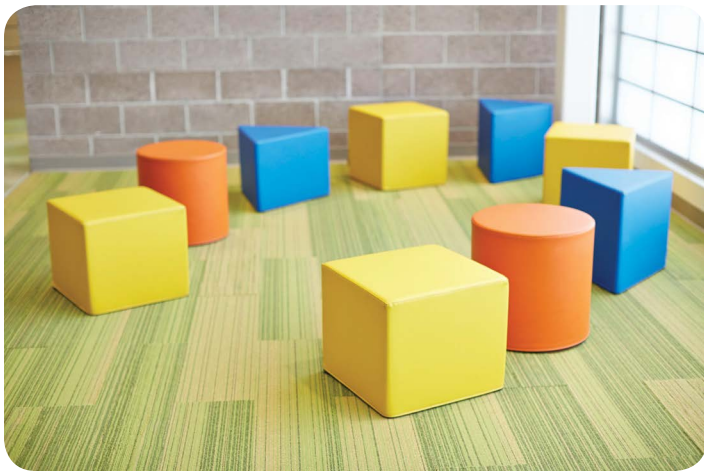
Clusters of **Full Time 30° Curve** and **Round** ottomans.

### Left:

**BLOX** soft seating for the smaller set.

### Below:

Multi-purpose space with **Raetsel** tables, **Romak** Chairs, **Shroom** stools and **BLOX** soft seating.





**Above:**

A lounge-learning commons area with **Forum Lounge** seating, **Forum Ottomans** and **Forum Coffee Tables** (foreground). In the back are **Hannah Chairs** paired with rectangular **Orbit Tables**.

**Below:**

**Bola** tables and chairs for the little ones.





**Above:**

An arrangement of **PBLOX** pair with **Full Time Ottobles** to make a "Flower" grouping.

**Below:**

This vibrant mediasharing commons includes a **Crayon** table, **Push Pop** stools, **Ad Lib** riser seating, **31 Series** bookshelves, an **Orbit** round table, **Full Time 30°** curve ottomans and both convex and concave **Drift** shelving units, all in an assortment of exciting colors.





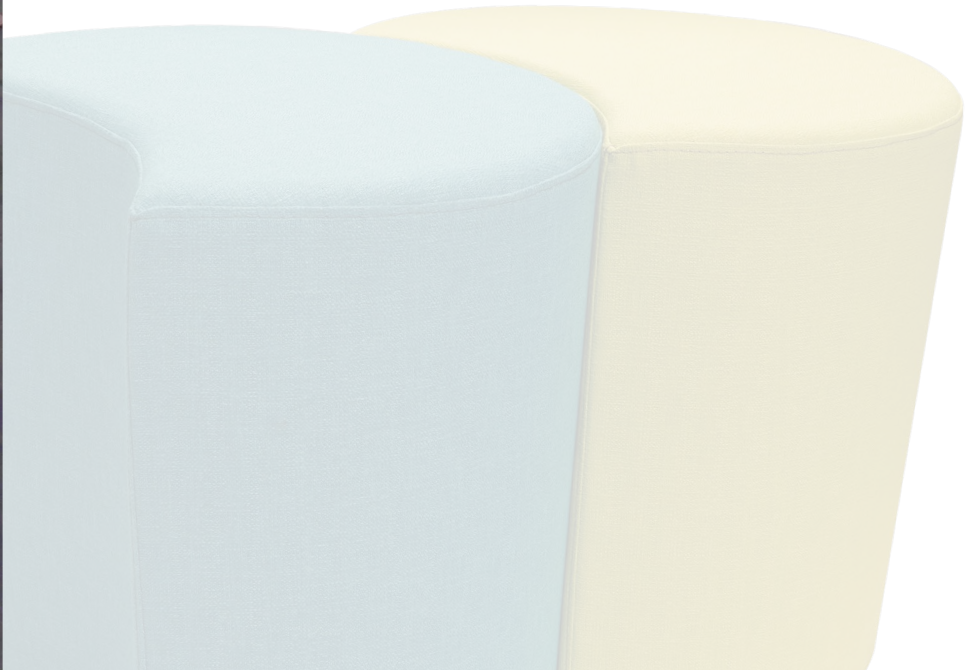
## Mix. Match. Commons

A commons space can be a relaxed gather-space, a collaborative makerspace, or a mediasharing space equipped with all the bells and whistles, the sky's the limit!

23

### Above:

**Work+Box Islands** with tote storage couple with **Carlo** stools and **Romak** chairs. In the background, **Rockford Crescent** tables work together to create a curvy shape while paired with an assortment **Romak** chairs and **Blox** soft seating.





Hannah Stool

Hannah Chair

Hannah Mobile Chair



Smile Stool



Smile Chair



Arc Chair



Arc Stool



Forum Lounge



Forum Ottoman



Bola Chair



Bola Jr. Chair



Slide Stool



Slide Mobile Chair



Slide Chair



Romak Chair

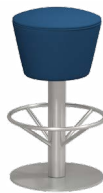
24



Bella Stool



Bella Chair



Toadstool 30" with footring



Toadstool 25" with footring



Toadstool 20"



Push Pop 20" Stool



Push Pop 25" Stool with footring



RoJon Mobile Stool W/ tablet arm



Carlo Stool



Carlo Mobile Stool



Full Time Halfback Ottoman



Shroom Stool



Engage Lounge



Engage Lounge Armless





Full Time  
30° Curve  
Ottoman



Full Time  
Half-round  
Ottoman



Full Time  
Crescent  
Ottoman



Full Time  
Mobile  
Ottoman



Full Time  
Round  
Ottoman



Full Time  
Rectangle  
Ottoman



CBLOX  
Soft  
Seating



TBLOX  
Soft  
Seating



PBLOX  
Soft  
Seating



QBLOX  
Soft  
Seating



Ad Lib 2-Tier  
Riser Seating



Ad Lib 3-Tier  
Riser Seating



FRED  
Soft Seating



Deuce  
Lounge



Deuce  
Café Counter



Duo Connector  
Stool



Duo Lounge



Duo Café  
Counter



Shirley Booth



Pocket Lounge



Pocket Café Counter





Timetable Round Occasional Table



Orbit Round Occasional Table



Orbit Square Occasional Table



Full Time Round Ottable



Duo Coffee Table



Forum Work Table



Forum Occasional Table



Derby T-Base Table



Bola Table



Rockford Pick Table



Orbit Café Table



Orbit Lightbulb Table



Grootable Fixed-Base Table



Crayon Media-sharing Table

26

elements

elements is Track-mounted comprehensive and flexible caseloads, marker and tack board system that makes reconfiguring and repurposing simple, quick and clean. This system is amazing - see how elements works. Watch the video



# Pairings



Rockford  
Raetsal Table



Rockford  
Crescent Table



Cirrus Straight  
Table



Cirrus Curve  
Table



Edison  
Inventor Table



Kirby Table



Downtown  
Table



Oscar  
Trash Receptacle



Indy Table



Work+Box Island  
Clover Top Table



Cheesewall  
Privacy Divider

**transition**

**transition** is a track-mounted, expandable shelving system with the flexibility to:

- add and rearrange shelves without tools
- add doors, drawers, siding marker boards and coat hooks
- reconfigure and expand as your needs change



O, so tasty!



[www.mediatechnologies.com](http://www.mediatechnologies.com)

892 Industrial Park Drive  
Shelby, MI 49455  
P: 231.861.2194  
F: 231.861.6678  
[www.mediatechnologies.com](http://www.mediatechnologies.com)  
[sales@mediatechnologies.com](mailto:sales@mediatechnologies.com)

CC 1909

PURE MICHIGAN®