

# Get On Track!

with mediatechnologies



**EDspaces**  
Designing the Future of Education  
Pittsburgh, PA | November 3-5, 2021



## Flexibility is now a necessity.

We “furniture people” have talked about flexibility for a long time. However, the last couple years have shown all of us the absolute necessity of flexibility.

We already know about the flexibility benefits of mobile furniture in the center of the room. Let’s re-frame the way we look at something that is NOT flexible - casework, the classic classroom storage solution. Let’s make it a better solution. *Let’s make casework flexible!*

## Let’s get on track with flexibility.

**elements@** and **Transition** are track-mounted modular casework and shelving lines respectively.

**elements@** features a wide range of base, wall and tall modular storage units that can be mixed and matched to meet your required storage needs.

**Transition** is a shelving line that allows you to easily add, subtract and reconfigure by adding or subtracting transition components.





## 8 great reasons to choose elements® and transition.

1. **Ability to Repurpose.** Easily. Fixed casework is no longer fixed and can be used as needed.
2. **Flooring installation can be wall-to-wall.** This means space reconfiguration without the coordination of other trades. No having to match 10 year old flooring or being forced to replace it.
3. **Elements is 6" off the floor.** Easy to clean under. Room to store extra goodies underneath (like shoes or totes). 6 inches of flood protection. Easily removed and stored if evacuation is necessary.
4. **You can buy incrementally.** Avoid construction delays and budget constraints. You can phase your projects without being delayed or forced to make last minute concessions. You can always add more as needed.
5. **Thoughtful design by room.** Design spaces based on teacher needs. No cookie cutter design. No wasted money on underutilized casework.
6. **Population shifts? Schools closing or expanding in the future?** Elements can adapt to changes in classroom and school population.
7. **Need to remove casework for any reason?** Do it with your cabinet jack! Don't have one? We can help you with that.
8. **Shift tax and installation costs to furniture.\*** Assigning casework dollars to F/E will allow more flexibility in furniture specifications as well as construction. \*See our costing worksheet on page 29 for guideposts in construction and furniture budgets.

## Look at the following 4 examples of educational spaces.

Note the use of track-mounted and mobile storage solutions, and mobile and easy-to-move furniture. Each of these spaces can be reconfigured as room requirements change - including the wall-mounted storage!

Plus

We have a *Build it HERE* philosophy, so nearly everything you see here is manufactured in Shelby, MI USA.



mediatechnologies

# ADMIN SPACE

Visit us at [www.mediatechnologies.com](http://www.mediatechnologies.com)



2) змбге ебге нмбгнл

4) змге ебге нмбгнл

3) змбббб

3) змбббб

1) змбббб

змбббб

6) змбге ебге нмбгнл

4) змге ебге нмбгнл

2) змбббб

3) змбббб

1) змбббб

змбббб



# ADMIN SPACE

Our **Admin Space** provides activity and storage space for 1 on 1 mentoring, a desk space with additional worksurface space, markerboard and tackboard, plus a lounge seat with ottoman.

**On track with:**

(2) Shelf Starter Unit TRN-SB-843013-L HPL: Formica Danish Maple 8906-58, PVC: Pebble C200007;  
(2) Upper Doors TRN-DOORU-3025-L-P0N (Acrylic Windows) HPL: Formica Danish Maple 8906-58, PVC: Medium Tone C400446, 3form insert: Purple Martin Sandstone finish front and back; (2) Base Doors TRN-DOORB-3030-L-P0N HPL: Formica Danish Maple 8906-58, PVC: Medium Tone C400446; (1) WSD-C-3060-L HPL Worksurface: WA High Rise 4996-38, PVC Worksurface: Generic White C100033; (1) TMB-4848 - Alpine White FL5781 Marker Board

Visit us at [www.mediatechnologies.com](http://www.mediatechnologies.com)

**On track with:**

(1) Tall Cupboard Storage TCSL-242484-LL HPL: Formica Danish Maple 8906-58, PVC: Pebble C200007, HPL Back Panel: can be WA High Rise 4996-38; (1) Tall Open Storage with drawers TOSD3-302484 HPL: Formica Danish Maple 8906-58, PVC: Pebble C200007, HPL Back Panel: WA High Rise 4996-38; (1) Countertop WS-C-2472-L HPL: Wilsonart High Rise 4996-38, PVC: Generic White C100033, 1 Ea. PDCT22-C3060-ADJ-4C HPL Back Panel: WA High Rise 4996-38; (3) Vertical Standard Track VST (3) Adjustable Worksurface Support Arms (1) Tack Board TTAB-4848 3Form Felt Nickel

## Flexible Casework Solution:

**Transition** shelf units with cupboard doors plus **elements**<sup>®</sup> workspace and tiles components create the backbone of the 1 on 1 mentoring space.

**elements**<sup>®</sup> tall cabinets are book-ends for a track-mounted countertop, markerboard and tackboard tiles.



## Flexible Furniture Solution:

**Mobile** and **Moveable** furniture keeps the space fluid, flexible, comfortable and transformable to your requirements.

**mediatechnologies** can help you create an Admin Space with the flexibility you need today and the quality you need to meet your flexibility requirements for years to come.



GTX Desk



Arc Task Chair

### Mobile and Moveable:

(1) GTX Desk w/ Modesty Panel - GD-C3060-29-4C HPL Worksurface: Wilsonart High Rise 4996-38, PVC: Generic White C1000033, Powder Coat: Siler 809, Modesty Panel: 3Form Purple Martin Acrylic; (1) Arc Task Chair - ARC-G55D43-G3-809 Seat Back: Mayer Acuco Zebra 445-006, Seat: Mayer Galveston Lilac GV-005, Powder Coat: Silver 809; (1) Mobile Pedestal - WMPS361120-W-LL HPL Front, Case: Formica Danish Maple 8906-58, PVC Front, Case: Medium Tone C400446, Fabric Cushion: Mayer Galveston Lilac GV-005

Visit us at [www.mediatechnologies.com](http://www.mediatechnologies.com)



### Color Palette Inspiration

Inspiration for a color palette can come from anywhere. The color palette of the Admin Space includes the earthy and floral tones that one might find in the Lavender fields of France.



# ADMIN SPACE



Full Time Ottoman



Forum Lounge & Forum Ottoman

(2) Full Time Ottoman FTD-20-G4-4W Fabric: Mayer Galveston Lilac GV-005, Wood Feet: Millenium Oak MO30; (1) Forum Lounge - FRM-N68E03S-G3 Fabric: Mayer Acuco Zebra 445-006, Powder Coat: Silver 809; (1) Forum Ottoman Fabric: Mayer Galveston Lilac GV-005, Powder Coat: Silver 809



mediatechnologies

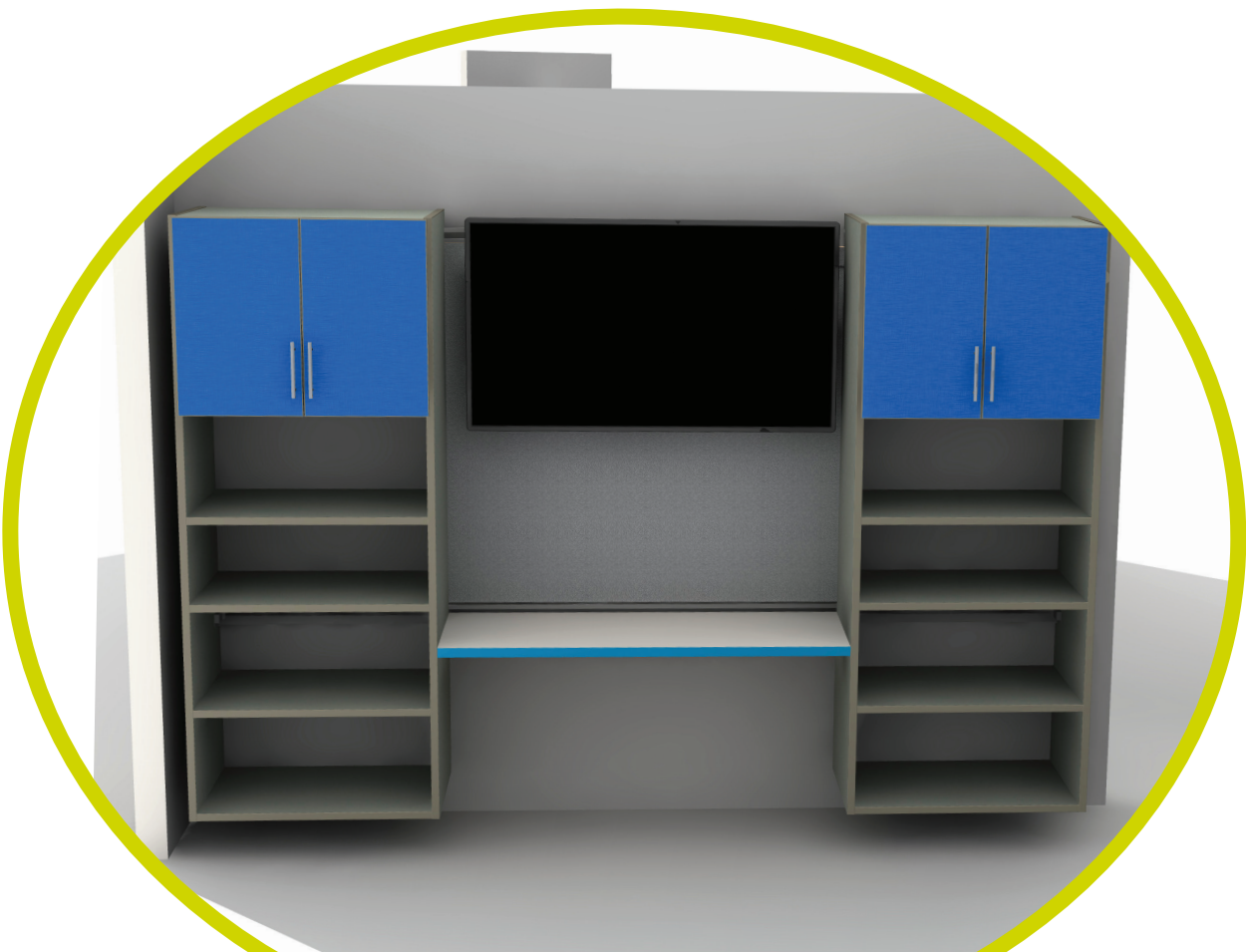
# CLASSROOM SPACE



**On track with:** (2) Shelf Starter Unit TRN-SB-843019-T TFL: Stainless Aluminum, PVC: Fog C600257;  
(2) Upper Doors TRN-DOORU-3625-T-P5N TFL: WilsonArt Catalina 13092, PVC: Catalina C500195;  
(1) Countertop WS-C-2048-L HPL: Formica White Drops 8824-58, PVC: Catalina C500195;  
(3) Vertical Standard Track VST (3) Adjustable Worksurface Support Arms WSAPL-16,WSAPR-16; (1) TTAB-4848

# CLASSROOM SPACE

Our **Classroom Space** includes a mobile teacher desk with a mating, height adjustable table. Perimeter storage that includes cupboard storage and shelving with a countertop workspace, a stowable table and lightweight active stool. Plus, the space features a space-saving eWall unit incorporating storage and markerboard space, a mobile storage cabinet with integrated markerboard panels and Surfboard personal display board storage and track mount Surfboard wall display.



# eWALL



## Flexible Casework Solution:

**Transition** shelf units with cupboard doors plus **elements**<sup>®</sup> countertop and tiles components carve out this instruction area.

**eWall** combines markerboard instruction space with a vast amount of cupboard and drawer storage to maximize available floorspace.

**Surfboard** on-track display possibilities. Plus, colorful felt Surfboards help soften reverberating sound by dampening sound energy. Felt Surfboards are **3form** Sola Felt that utilizes PET technology.



**On track with:** (1) eWall Unit BCSD-001-921484  
TFL Case: Stainless Aluminum, PVC Case: Fog  
C600257, TFL Fronts: Catalina 13092, PVC  
Fronts: Catalina C500195; (3) Track mount  
Surfboard Hangers HTSBB

## Flexible Furniture Solution:

**Function** and **Flexibility** are on display in our Classroom Space. A mobile teacher desk with a mating, adjustable height table that can serve as a lectern and a comfortable task chair. Tall mobile storage with side panels that provide extra markerboard space. A pull-out table with a “write-on” tablet is paired with an active stool for individual study and task work. Add to that a mobile cart for individual “Write-on” boards.

**mediatechnologies** offers an incredibly broad selection of desk, table, storage and seating options to outfit your classroom space.

# CLASSROOM SPACE



Jane



Porter X-Base



Hannah

(1) Jane Mobile Desk JN3-C3060T-29, HPL Worksurface: Formica White Drops 8824-58, PVC Worksurface & Base: Catalina C500195, TFL Base: WilsonArt Catalina 13092, Powder Coat: Silver 809; (1) Porter Adjustable height Mobile X-base table PX26-C0036-ADJPN-4C, HPL Worksurface: Formica White Drops 8824-58, PVC Worksurface & Modesty: Rehau Catalina C500195, Powder Coat: Silver 809; (1) Hannah task chair, Thermoplastic Color: Woodpecker T17, Powder Coat: Silver 809, Fabric: Designtex Sail Color Wheel 3909-901

Visit us at [www.mediatechnologies.com](http://www.mediatechnologies.com)

## Color Palette Inspiration

Inspiration for our Classroom Space color palette comes from the Round Island Lighthouse located “up North” in the Straits of Mackinaw.



Drift Storage



Surfboard Cart



Vector with  
a Surfboard



Dotti  
Active Stool

(1) Vector table with surfboard and side mount VT-C2436-27, HPL:Formica White Drops 8824-58, PVC: Catalina C500195, Powder Coat: Blue Wren 627, SFB-1824, SFB-SMB; (1) Dotti Stool DOTTI-18 DesignTex Sail Color Wheel 3909-901; (1) Surfboard Cart SFBC-2446-55-MOB TFL: WilsonArt Catalina 13092, PVC: Catalina C500195, Powder Coat: Silver 809; (12) Surfboards SFB-1824; (3) Softboards SFF-1824, 3Form Sola Felt Nickel, 3Form Sola Felt Jasper; (1) Drift Cupboard Storage DFT-36-7224S-CS-TT-MOB, TFL Case: Stainless Aluminum, PVC Case: Fog C600257, Back: 3Form Sola Felt Admiral (1/4"thickness), Exterior Sides: Alpine White FL5781 Marker Board;



mediatechnologies

# LECTURE SPACE

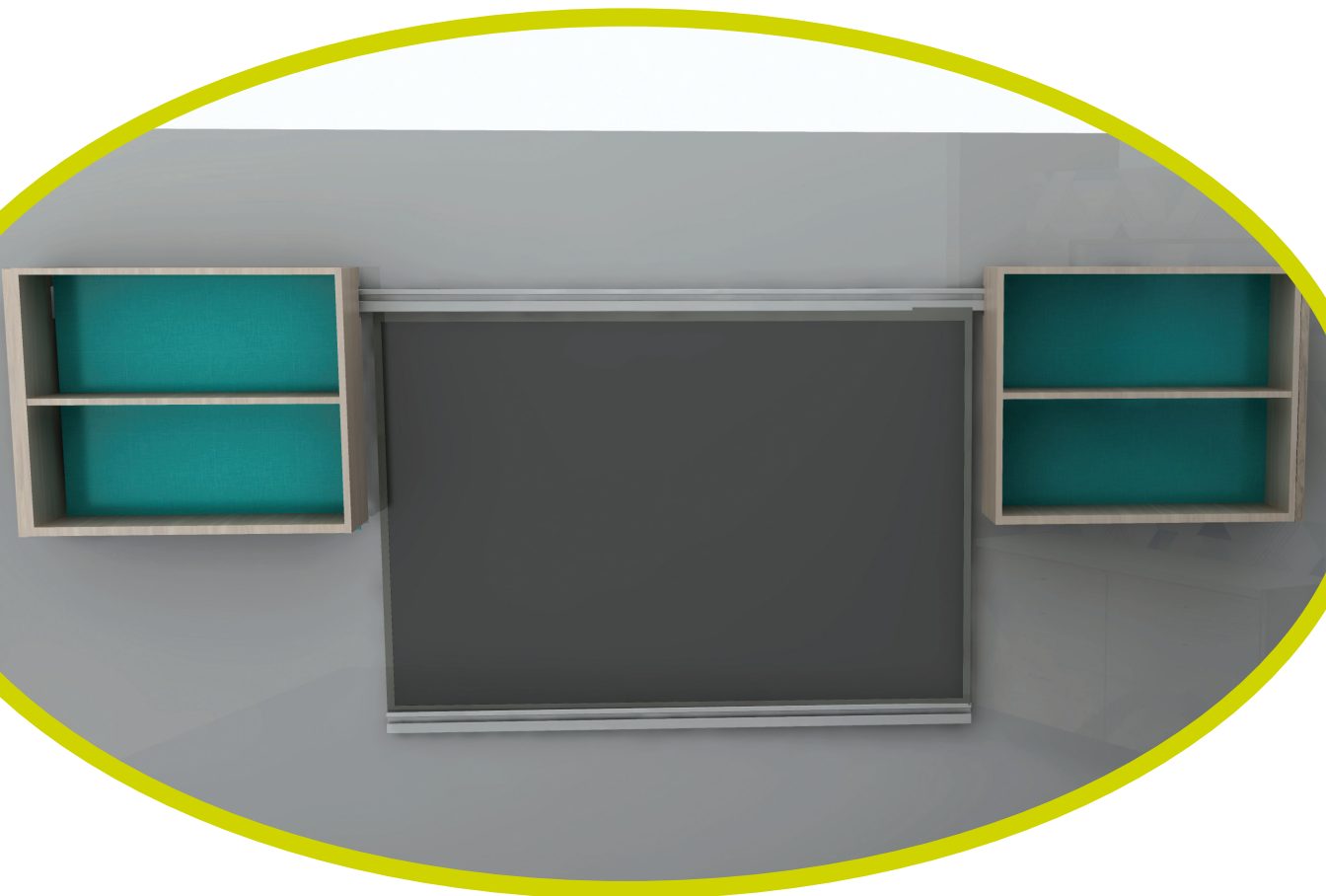




# LECTURE SPACE

Our **Lecture Space** features both wall-mounted and mobile storage and tiered, lecture seating. This space showcases furniture that has been designed to enhance presenter technology intended for remote learning. The presenter table with task stool had been designed to enhance the use of presenter technology.

The tile that provides the backdrop for the presenter is mounted between an upper and lower length of track.





## Flexible Casework Solution:

**elements**<sup>®</sup> wall and base units provide the track-mounted perimeter storage in this space. The tile between the two wall-mount shelf units can serve as a backdrop or “green screen” for the presenter.

**elements**<sup>®</sup> cabinets and accessories are track-mounted. This space shows items that do not require both the upper and lower track. The shelf units only require the upper track while the drawer unit only requires the lower track.

**On Track with:** (2) elements Open Wall Storage Unit - WOS-361424-L HPL Box: Formica Buff Elm 5793-NG, PVC: Pebble C200007, TFL Base: WilsonArt Catalina 13092, HPL Back: Wilsonart Moroccan 13094-60; (1) HPL Screen Panel - TMB-7248-W, HPL: Formica Black 909-CT; (2) elements Base Units - BDS3-302036-LL-NB-CT, HPL Continuous Top: Wilsonart Crisp Linen 4942-38, PVC: Pebble C200007, HPL Case: Formica Buff Elm 5793-NG

## Flexible Furniture Solution:

**Nimble** and **Adaptable**. Our Lecture Space, as shown, is currently configured for a specific presenter, presentation technology and presentation style. But the beauty of nimble and adaptable is that the space can change on-the-fly as requirements change! Mobile storage, tables and seating, along with easy to move seating, makes reconfiguration quick and easy.



Modified Porter Table



Hannah Task Stool



Rubix Cubicle Storage



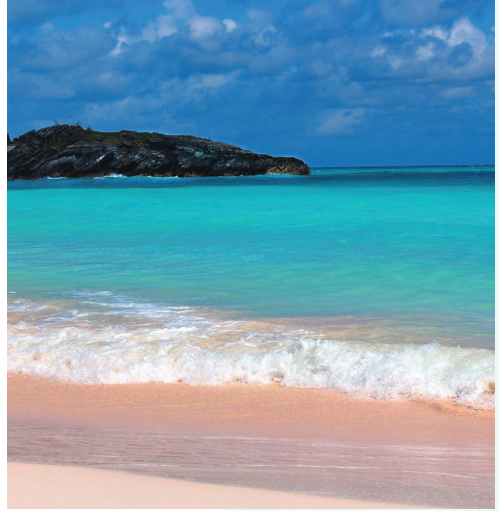
Rubix Cupboard Storage

(1) Rubix Cubicle Storage - OCB3636-18-MB-L, HPL Top: Wilsonart Crisp Linen 4942-38, HPL Box: Formica Buff Elm 5793-NG, PVC: Pebble C200007, Powder Coat: Silver 809; (1) Rubix Cupboard Storage - CS3636-18-MB-LL, HPL Top: Wilsonart Crisp Linen 4942-38, HPL Box: Formica Buff Elm 5793-NG, PVC: Pebble C200007, Powder Coat: Silver 809; (1) Hannah Task Stool - HAN009-T29-809 + HAN600A, Thermo-plastic: Hummingbird T29, Powder Coat: Silver 809, Fabric: Carnegie Tilt Blue; (1) PDCT22-C3060-ADJ-4C-Eglass Style, HPL Worksurface: Formica Buff Elm 5793-NG, PVC: Pebble C20007, Powder Coat: silver 809

Visit us at [www.mediatechnologies.com](http://www.mediatechnologies.com)

### Color Palette Inspiration

Inspiration for our Lecture Space color palette comes from the sunny shores of Bermuda. Cool turquoise and warm earth tones.



# LECTURE SPAC



Cesar Table with Modesty Panel



Arc Stool



Cesar Table



Arc Sled Base Chair

(2) Arc Stools - ARC-S55F43PBH-T29-809, Thermoplastic: Hummingbird T-29, Powder Coat: Silver 809; (2) Arc Sled Base Chairs - ARC-N55E43P-T29-809, Thermoplastic: Hummingbird T-29, Powder Coat: Silver 809; (1) Cesar Table - CT20-C2460-FT-42-4C with Modesty Panel, HPL Worksurface: Wilsonart Crisp Linen 4942-38, HPL Modesty: Formica Buff Elm 5793-NG, PVC: Pebble C200007, Powder Coat columns: Silver 809, Powder Coat Feet: Hummingbird 629; (1) Cesar Table - CT20-C2460-FT-29-4C, HPL Worksurface: Wilsonart Crisp Linen 4942-38, PVC: Pebble C200007, Powder Coat columns: Silver 809, Powder Coat Feet: Hummingbird 629;

DISCOVERY LAB

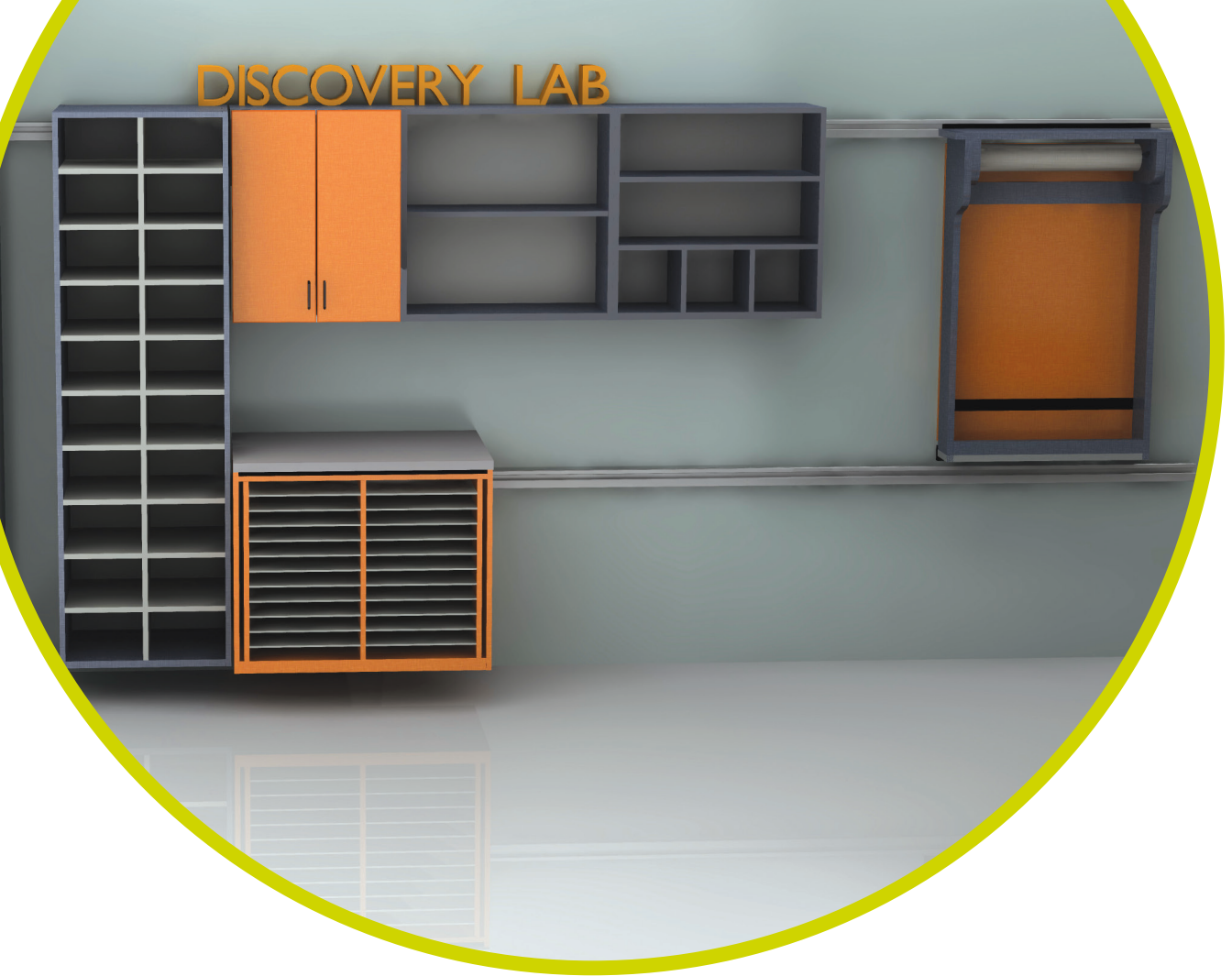


mediatechnologies

**MAKER SPACE**



## DISCOVERY LAB



# MAKER SPACE

There are two things every **Maker Space** requires...lots of useable worksurface space and lots of storage. Our Maker Space packs a lot of different styles of storage into the available perimeter space plus a surprise feature or two like a Lego® wall or an activity wall with a paper roll and another with peg board.

**On Track with:** (1) elements Open Tall Cubicle Unit - TOCB20-242084-L, TFL Case: Nightfall, PVC Case Exterior: Nightfall C500193, TFL Center Panel, Back & Shelves: Canadian Gray, PVC Center and Shelves: Silver Gray C200244; (1) elements Wall Folio Unit - BOF-362034-T, Trespa Silver Grey, TFL Case: Dragon Fire 13088, PVC Case: Dragon Fire C300346, TFL Center Panel, Back & Shelves: Canadian Gray; (1) elements Wall Open Cubby Storage Unit - WOSCB3-301430-T, TFL Case: Nightfall 5023, PVC Case: Nightfall C500193, TFL Back : Canadian Gray; (1) elements Wall Open Storage Unit - WOS-301430-T, TFL: Nightfall 5023, PVC: Nightfall C500193, TFL Back: Canadian Gray; (1) Activity Wall Paper Roll - PW-3248-10, TFL Frame: Nightfall, PVC: Nightfall C500193, Back: Dragon Fire TFL

Visit us at [www.mediatechnologies.com](http://www.mediatechnologies.com)

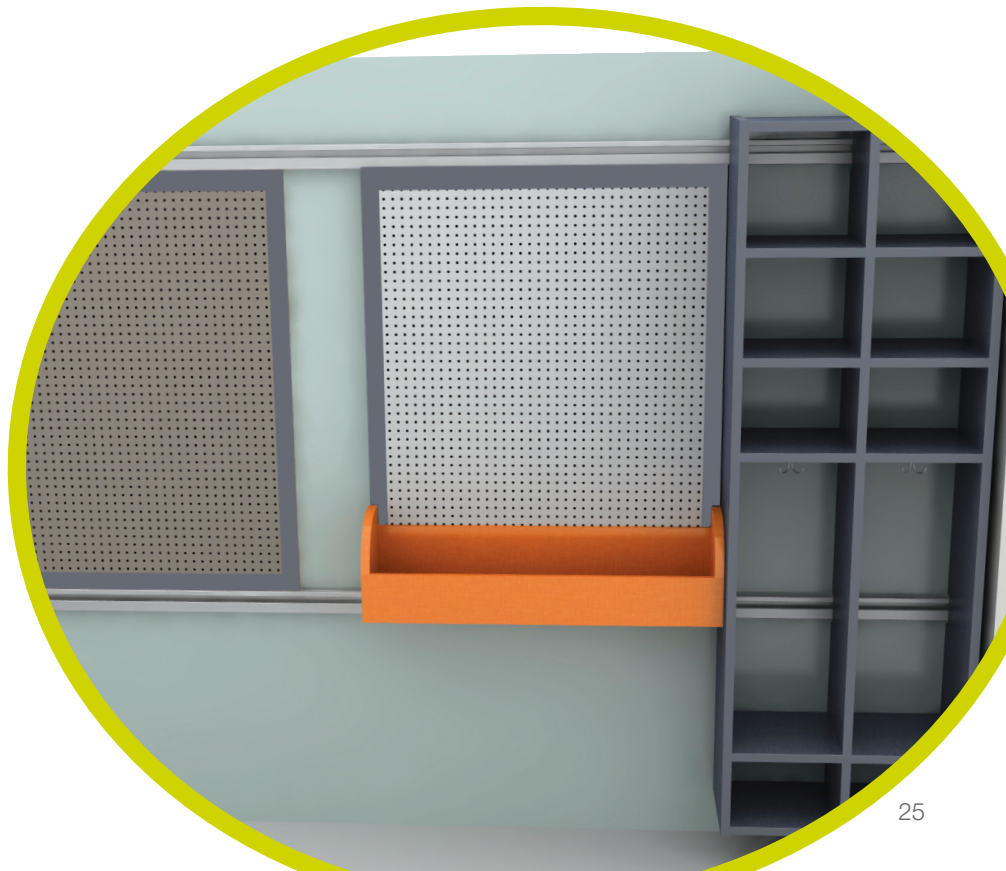


**On track with:** (1) elements Activity Wall Peg Board - PBW-3248-8, TFL Frame: Nightfall Spray on on Maple, Powder Coat Silver, Trough Sprayon Blue Heron OR Dragon Fire; (1) elements Lego® Wall , Frame: Nightfall Sprayon; (2) Transition Locker - TRN-SH12F-LOCKER-19-T, TFL Case: Nightfall, PVC exterior: Nightfall C500193

## Flexible Casework Solution:

**elements®** wall, base and tall units provide several styles of storage possibilities - open storage, locking cupboard storage, folio storage and cubby storage. The folio unit even has a worksurface.

**elements®** tile units are designed to be mounted in-between the tracks. This is how the Lego® wall and activity walls fit neatly into the **elements®** system.



## Flexible Furniture Solution:

**Double Duty.** Our Maker Space features mobile worksurface and seating solutions that double as storage. The Work+Box Dock tables not only provide cupboard and tote storage, but they can be combined (with the integral magnets) into one table! Our Edison Inventor Table stores totes on rails mounted directly beneath the worksurface. Even the Drift Bench offers cubicles to store totes or to stash other items. The Carlo Stool provides the seating for those engaged in maker space projects.



Work+Box Dock  
Cupboard Storage



Work+Box Dock  
Open Tote Storage



Drift Bench



Carlo Stool



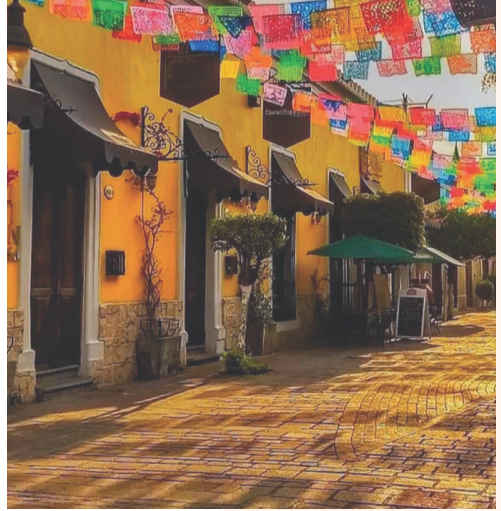
Edison Table

(1) Work+Box Dock Cupboard Storage - WBXD-C2760D-36-TT-MOB, Top: Trespa Silver Grey, TFL Base: Dragon Fire 13088, PVC Base: Dragon Fire C300346; (1) Work+Box Dock Open Tote Storage - WBXD-C2660D-36-TT-MOB, Top: Trespa Silver Grey, TFL Base: Dragon Fire 13088, PVC Base: Dragon Fire C300346; (4) Carlo Stools - CRS-25, Sprayon Finish: Oriole, Powder Coat: Blue Heron 613; (1) Drift Bench Open Storage Seat - DFTB-42-1819-TOTO-T-MOB, Fabric: Mayer Silverweave Bittersweet SW-039, TFL Case: Nightfall, PVC Case: Nightfall C500193; (1) Edison Table - EDO-P4260-36, Top: Trespa Silver Gray, Powder Coat: Blue Heron 613

Visit us at [www.mediatechnologies.com](http://www.mediatechnologies.com)

### Color Palette Inspiration

Inspiration for our Maker Space could very easily have come from a visit to Tlaquepaque in Mexico. The space exudes earthy warmth.



# MAKER SPACE



Work+Box, Carlo  
Edison Maker KIT

## What is a KIT?

A kit is a group of 3 or more different furniture items that, when used together, form a furniture solution that can support specific function. Here we have an Edison Table, Work+Box Dock unit and Carlo Stools that create a maker space station.

We've got a lot of Kits.



Make no mistake, ***NOBODY*** offers as many fabric, finish and material possibilities as **mediatechnologies**.

Visit us at [www.mediatechnologies.com](http://www.mediatechnologies.com)

# elements® & Standard Casework Cost Comparative Worksheet

## elements® vs. Standard Casework

	Standard Casework Construction	Elements Modular Construction	Cost	
<b>Delivered Product Cost (with Freight)</b>	**\$47,763.00	\$52,781.07	\$5,018.07	
<b>Sold as Construction</b>	<b>Cost</b>	<b>Sold as F/E</b>	<b>Savings</b>	<b>Notes</b>
<b>Sales Tax*</b>	\$3,348.00	\$0	\$(3,348.00)	No sales tax paid on F/E
<b>Construction Manager</b>	\$3,851.81	\$0	\$(3,851.81)	
<b>General Contractor</b>	\$3,633.78	\$0	\$(3,633.78)	
<b>Installation*</b>	\$9,452.00	\$9,452.00	\$0	Prevailing wages aren't considered
<b>Total Procurement Cost</b>	<b>\$68,048.59</b>	<b>\$62,233.07</b>	<b>\$(5815.52)</b>	<b>Approximately 9% savings</b>

### Other Cost Considerations Associated with Modular vs. Permanent Casework:

<b>Reconfigurability</b>	n/a	100%	Paint touch up will be needed
<b>Flooring Cost</b>	100%	n/a	
<b>Cabinet Jack</b>	n/a	\$2819 (List)	

\*The example above makes a few assumptions. It assumes a General Contractor cost. It also assumes that the construction is taking place in a State with a sales tax (Like Georgia's 6% tax) on construction only, no prevailing wage or tax for F/E to consider.

Even without those assumptions, the great benefit of elements® modular casework is that its quality construction ensures it will last for years (decades actually). elements® carries a standard 5-year warranty. Whereas, standard casework only carries a 1-year warranty. elements® grants the specifying agent quality assurance once the job is complete. Additionally, as the "Other Cost Considerations" section of the chart indicates, the modular design makes it infinitely reconfigurable (without the use of a sledgehammer), and there is no flooring cost associated with reconfiguration because there is a 6" space between the floor and the bottom of elements cabinets.

\*\*The example above reflects the following" For casework construction - TFL Case with HPL exterior faces, top and face fillers. For elements® construction - TFL case interior and exterior (finish grade) with HPL fronts, no top and face fillers.

From top to bottom, choosing **elements®** is a decision for a bright and flexible future!







**mediatechnologies** is the largest furniture manufacturer in Michigan (that is located in the 49455 zip code). We have been making amazing wood products in the beautiful village of Shelby since 1984. Ok, we started with electric guitars, but we've been Rockin' Furniture since 1989.

Our **mediatechnologies** brand of K-12 and public library furniture has earned the reputation of being "30-year furniture" (which means it lasts for a long time). Our strength lies in finding unique solutions to our customers' furniture needs because we have a rare and special talent... we actually listen to our customers.

We are excited to be able to share this talent with you.

So, I guess you can say,

**mediatechnologies is your furniture company.**



mediatechnologies.com | 231.861.2194