

# Modular Circulations Desks

## General Specifications - Circulation Desks

**Modular Case System:** Each case module is fully assembled, allowing for simple field assembly of the complete circulation desk as well as for easy reconfiguration, if necessary. Cases connect with male/female threaded metal connectors.

**Top:** Tops are 1-1/4" thick, three ply engineered wood construction with .050" High pressure laminate, HPL, and a phenolic backer sheet. The patron side is edged with 5/16" x 1-1/4" solid red oak (with the exception on the Malibu and Keystone design have 1-5/8") with a 1/4" radius top and bottom. The edges and back side of the top are edged with 1/8" solid red oak.

**Case Construction:** Circulation desk modules are constructed of 3/4" thick, three ply particleboard with plain sliced "A" grade oak veneer. All modules, except Malibu style, utilize a continuous front design (sides do not penetrate), with a 4" High recessed toe. Cabinets are assembled using glue and dowel joinery. Note: One Terminating End Panel is required for each exposed end of a complete desk assembly.

**Adjustable Shelves:** Adjustable shelves are 3/4" thick three ply particleboard plywood with "A" grade oak veneer faces. The exposed edges are edged with 1/8" solid red oak. Shelves are adjustable on 32mm increments.

**Drawers:** Drawers are constructed of 1/2" nine ply baltic birch plywood. Drawers have 3/4" thick fronts with "A" grade oak veneer. Box drawers have 100 lb. full extension slides, file drawers have 100 lb. full extension slides.

**Doors:** Doors are constructed of 3/4" thick, three ply particleboard with plain sliced "A" grade oak veneer faces and edged on all sides with 1/8" solid red oak. Door hardware includes concealed hinges, fully adjustable in all 3 axes, and wire pulls.

**Continuous Top Construction:** Tops may be specified as continuous.

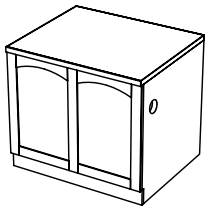
**Locks:** Units may be specified with doors and or drawers locking, keyed random or alike.

**Design Lines:** mediatechnologies® offers seven design lines of circulation desk modules, all using the general construction specifications above.

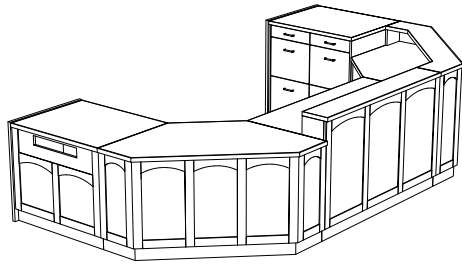
To specify a design line you must include a letter indicator: No letter indicator will specify our standard Bookmark design.

**M**-Metro      **L**-Lexington      **H**-Heritage      **MB**-Malibu  
**CL**-Charleston      **KS**-Keystone

Please see below for design descriptions



**Lexington:** a classic arched rail and stile design line, using solid oak details applied to the patron side of most modular units.  
Model Number example for  
Lexington Desk unit;  
MCD-L-36D-29



# Lexington

## Circulation Desks

Desk Units				
<b>36" Wide</b>	<b>Model Number</b>	<b>Description</b>	<b>Wgt.</b>	<b>List Price</b>
	MCD-L-36D-29	Desk Unit, 36"W X 30"D X 29" H	120	\$2,619
	MCD-L-36D-32	Desk Unit, 36"W X 30"D X 32" H	126	\$2,619
	MCD-L-36D-39	Desk Unit, 36"W X 30"D X 39" H	141	\$2,784
	MCD-L-36D-32-ADJ	Desk Unit, 36"W X 30"D X ADJ. H	126	\$2,855
<b>48" Wide</b>	<b>Model Number</b>	<b>Description</b>	<b>Wgt.</b>	<b>List Price</b>
	MCD-L-48D-29	Desk Unit, 48"W X 30"D X 29" H	131	\$3,490
	MCD-L-48D-32	Desk Unit, 48"W X 30"D X 32" H	138	\$3,490
	MCD-L-48D-39	Desk Unit, 48"W X 30"D X 39" H	153	\$3,699
	MCD-L-48D-32-ADJ	Desk Unit, 48"W X 30"D X ADJ. H	138	\$3,803
<b>72" Wide</b>	<b>Model Number</b>	<b>Description</b>	<b>Wgt.</b>	<b>List Price</b>
	MCD-L-72D-29	Desk Unit, 72"W X 30"D X 29" H	206	\$5,322
	MCD-L-72D-32	Desk Unit, 72"W X 30"D X 32" H	212	\$5,322
	MCD-L-72D-39	Desk Unit, 72"W X 30"D X 39" H	230	\$5,344
	MCD-L-72D-32-ADJ	Desk Unit, 72"W X 30"D X ADJ. H	212	\$5,800
<b>Book Return</b>	<b>Model Number</b>	<b>Description</b>	<b>Wgt.</b>	<b>List Price</b>
	MCD-L-36BR-29	Book Return, 36"W X 30"D X 29" H	118	\$2,806
	MCD-L-36BR-32	Book Return, 36"W X 30"D X 32" H	124	\$2,806
	MCD-L-36BR-39	Book Return, 36"W X 30"D X 39" H	139	\$2,972
<b>Descending Platform Book Truck</b>	<b>Model Number</b>	<b>Description</b>	<b>Wgt.</b>	<b>List Price</b>
	MCD-DBT-1824-21	Depressible Platform Book Truck, 18"D x 24.25"W x 21"H, For curved 29"H Book Return Unites and Nomad Book Return	135	\$3,107
	MCD-DBT-1824-24	Depressible Platform Book Truck, 18"D x 24.25"W x 24"H, For Curved 32"-39"H Book Return Units	135	\$3,107
	MCD-DBT-2424-21	Depressible Platform Book Truck, 23.625"D x 24.25"W x 21"H, For 29"H Book Return Units with Extended Chutes and 32"H Keystone and Malibu Book Returns	137	\$3,107
	MCD-DBT-2424-24	Depressible Platform Book Truck, 23.625"D x 24.25"W x 24"H, For 32" and #("H Book Return Units	137	\$3,107
<b>Top Surface Slot Book Return Module with Drawer and Shelf Storage</b>	<b>Model Number</b>	<b>Description</b>	<b>Wgt.</b>	<b>List Price</b>
	MCD-L-36SBR-TOP-29	Book Return w Top Slot, 36"W X 30"D X 29" H	200	\$4,056
	MCD-L-36SBR-TOP-32	Book Return w Top Slot, 36"W X 30"D X 32" H	204	\$4,056
	MCD-L-36SBR-TOP-39	Book Return w Top Slot, 36"W X 30"D X 39" H	218	\$4,091
<b>Cupboard Units</b>	<b>Model Number</b>	<b>Description</b>	<b>Wgt.</b>	<b>List Price</b>
	MCD-L-36CS-29	Cupboard Unit, 36"W X 30"D X 29" H	189	\$3,974
	MCD-L-36CS-32	Cupboard Unit, 36"W X 30"D X 32" H	192	\$3,974
	MCD-L-36CS-39	Cupboard Unit, 36"W X 30"D X 39" H	210	\$4,014

# Lexington

## Circulation Desks

Cupboard Unit With Drawer	Model Number	Description	Wgt.	List Price
	MCD-L-36CD-29	Cupboard Unit, 36"W X 30"D X 29" H with drawer	201	\$4,570
	MCD-L-36CD-32	Cupboard Unit, 36"W X 30"D X 32" H with drawer	207	\$4,570
	MCD-L-36CD-39	Cupboard Unit, 36"W X 30"D X 39" H with drawer	225	\$4,605

Cupboard Unit With 2 & 3 Drawers (Cupboard Left)	Model Number	Description	Wgt.	List Price
	MCD-L-36C2DL-29	Cupboard Unit, Left, 36"W X 30"D X 29" H with 2 drawers, file/file	222	\$5,869
	MCD-L-36C2DL-32	Cupboard Unit, Left, 36"W X 30"D X 32" H with 2 drawers, file/file	225	\$5,869
	MCD-L-36C3DL-32	Cupboard Unit, Left, 36"W X 30"D X 32" H with 3 drawers, box/box/file	230	\$6,061
	MCD-L-36C3DL-39	Cupboard Unit, Left, 36"W X 30"D X 39" H with 3 drawers, box/file/file	256	\$6,116

Cupboard Unit With 2 & 3 Drawers (Cupboard Right)	Model Number	Description	Wgt.	List Price
	MCD-L-36C2DR-29	Cupboard Unit, Right, 36"W X 30"D X 29" H with 2 drawers, file/file	222	\$5,869
	MCD-L-36C2DR-32	Cupboard Unit, Right, 36"W X 30"D X 32" H with 2 drawers, file/file	225	\$5,869
	MCD-L-36C3DR-32	Cupboard Unit, Right, 36"W X 30"D X 32" H with 3 drawers, box/box/file	230	\$6,061
	MCD-L-36C3DR-39	Cupboard Unit, Right, 36"W X 30"D X 39" H with 3 drawers, box/file/file	256	\$6,116

Cupboard Unit With Open Storage (cupboard Left)	Model Number	Description	Wgt.	List Price
	MCD-L-36COSL-29	Cupboard Unit, Left, 36"W X 30"D X 29" H with open storage	186	\$4,163
	MCD-L-36COSL-32	Cupboard Unit, Left, 36"W X 30"D X 32" H with open storage	190	\$4,163
	MCD-L-36COSL-39	Cupboard Unit, Left, 36"W X 30"D X 39" H with open storage	204	\$4,217

Cupboard Unit With Open Storage (cupboard Right)	Model Number	Description	Wgt.	List Price
	MCD-L-36COSR-29	Cupboard Unit, Right, 36"W X 30"D X 29" H with open storage	186	\$4,163
	MCD-L-36COSR-32	Cupboard Unit, Right, 36"W X 30"D X 32" H with open storage	190	\$4,163
	MCD-L-36COSR-39	Cupboard Unit, Right, 36"W X 30"D X 39" H with open storage	204	\$4,217

Open Storage Units	Model Number	Description	Wgt.	List Price
	MCD-L-36OS-29	Open Storage, 36"W X 30"D X 29" H	185	\$3,186
	MCD-L-36OS-32	Open Storage, 36"W X 30"D X 32" H	189	\$3,186
	MCD-L-36OS-39	Open Storage, 36"W X 30"D X 39" H	202	\$3,220

Open Storage Unit With Drawer	Model Number	Description	Wgt.	List Price
	MCD-L-36OSD-29	Open Storage, 36"W X 30"D X 29" H with drawer	200	\$3,913
	MCD-L-36OSD-32	Open Storage, 36"W X 30"D X 32" H with drawer	204	\$3,913
	MCD-L-36OSD-39	Open Storage, 36"W X 30"D X 39" H with drawer	218	\$3,947

# Lexington

## Circulation Desks

Open Storage Unit With 2 & 3 Drawers (Open Storage Left)	Model Number	Description	Wgt.	List Price
	MCD-L-360S2DL-29	Open Storage, Left, 36"W X 30"D X 29" H with 2 drawers, file/file	209	\$5,663
	MCD-L-360S2DL-32	Open Storage, Left, 36"W X 30"D X 32" H with 2 drawers, file/file	212	\$5,663
	MCD-L-360S3DL-32	Open Storage, Left, 36"W X 30"D X 32" H with 3 drawers, box/box/file	220	\$5,879
	MCD-L-360S3DL-39	Open Storage, Left, 36"W X 30"D X 39" H with 3 drawers, box/file/file	240	\$6,137

Open Storage Unit With 2 & 3 Drawers (Open Storage Right)	Model Number	Description	Wgt.	List Price
	MCD-L-360S2DR-29	Open Storage, Right, 36"W X 30"D X 29" H with 2 drawers, file/file	209	\$5,663
	MCD-L-360S2DR-32	Open Storage, Right, 36"W X 30"D X 32" H with 2 drawers, file/file	212	\$5,663
	MCD-L-360S3DR-32	Open Storage, Right, 36"W X 30"D X 32" H with 3 drawers, box/box/file	220	\$5,879
	MCD-L-360S3DR-39	Open Storage, Right, 36"W X 30"D X 39" H with 3 drawers, box/file/file	240	\$6,137

Kneespace Unit	Model Number	Description	Wgt.	List Price
	MCD-L-36KS-32	Kneespace Unit, 36"W X 30"D X 32" H	138	\$3,682
	MCD-L-36KS-39	Kneespace Unit, 36"W X 30"D X 39" H	151	\$3,713

Corner Units				
45 Degree Flat	Model Number	Description	Wgt.	List Price
	MCD-L-30FC45-29	Flat Corner, 30"W X 30"D X 29" H	74	\$3,499
	MCD-L-30FC45-32	Flat Corner, 30"W X 30"D X 32" H	77	\$3,499
	MCD-L-30FC45-39	Flat Corner, 30"W X 30"D X 39" H	84	\$3,838

90 Degree Extended Flat	Model Number	Description	Wgt.	List Price
	MCD-L-30EFC-29	Flat Ext. Corner, 66"W X 30"D X 29" H	168	\$7,445
	MCD-L-30EFC-32	Flat Ext. Corner, 66"W X 30"D X 32" H	177	\$7,445
	MCD-L-30EFC-39	Flat Ext. Corner, 66"W X 30"D X 39" H	190	\$7,649

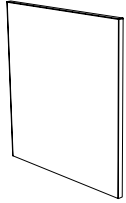
90 Degree Square	Model Number	Description	Wgt.	List Price
	MCD-L-30SC-29	Square Corner, 30"W X 30"D X 29" H	152	\$4,148
	MCD-L-30SC-32	Square Corner, 30"W X 30"D X 32" H	155	\$4,148
	MCD-L-30SC-39	Square Corner, 30"W X 30"D X 39" H	170	\$4,173

Triangle Corner Unit	Model Number	Description	Wgt.	List Price
	MCD-L-30TC-29	Triangle Corner, 30"W X 30"D X 29" H	88	\$3,265
	MCD-L-30TC-32	Triangle Corner, 30"W X 30"D X 32" H	91	\$3,265
	MCD-L-30TC-39	Triangle Corner, 30"W X 30"D X 39" H	98	\$3,437

\* Note: For Triangle Corner Unit with Shelves, use Bookmark MCD-TCS units.

# Circulation Desk End Panels

Note: One Terminating End Panel is required for each exposed end of a complete desk assembly. End Panels are available in all standard design lines. Terminating end panels are available to create right or left facing units. Right side and left side is determined from the perspective of the desk user.



Lexington	Model Number	Description	Wgt.	Price
	MCD-L-29EP-LH	Lexington Finished Left End Panel for 29"H Unit	19	\$763
	MCD-L-29EP-RH	Lexington Finished Right End Panel for 29"H Unit	19	\$763
	MCD-L-32EP-LH	Lexington Finished Left End Panel for 32"H Unit	20	\$763
	MCD-L-32EP-RH	Lexington Finished Right End Panel for 32"H Unit	20	\$763
	MCD-L-39EP-RH	Lexington Finished Left End Panel for 39"H Unit	24	\$871
	MCD-L-39EP-LH	Lexington Finished Right End Panel for 39"H Unit	24	\$871

# Transactions Tops

Lexington	Model Number	Description	Wgt.	Price
	MCD-L-36-TRX	Lexington Transaction Top 36"W X 7"H	19	\$806
	MCD-L-72-TRX	Lexington Transaction Top 72"W X 7"H	33	\$1,533
	MCD-L-30SC-TRX	Lexington Transaction Top 9"D X 7"H	19	\$1,908
	MCD-L-30EFC-TRX	Lexington Transaction Top 9"D X 7"H	29	\$2,221

### Set Up Charges and Upcharges for Non-Standard and Custom Finishes

Model Number	Description	List Price
Non-Standard PVC	Upcharge, per color, per order, for non-standard PVC	\$911
Custom Finish	Upcharge for custom stain finish	\$640
Non-Standard Stain	Upcharge for non-standard stains already matched	\$283
Sprayon Finish	Upcharge, per color, per order, for Sprayon finish	\$329
Non-Standard HPL	Upcharge for nonstandard HPL (applies to Bella and Romak only)	\$690