



Shelby Teacher Desk

classroom • office





classroom

SHELBY TEACHER DESK



2 Box/1 File
STD-C2454_-BBF-29
STD-C3054_-BBF-29
24"/30"D x 54"W x 29"H



2 File Drawers
STD-C2454_-FF-29
STD-C3054_-FF-29
24"/30"D x 54"W x 29"H



Toto Totes
STD-C2454_-TOT-29
STD-C3054_-TOT-29
24"/30"D x 54"W x 29"H



Open Storage
STD-C2454_-OS-29
STD-C3054_-OS-29
24"/30"D x 54"W x 29"H



Cupboard Storage Left
STD-C2454_-CSL-29
STD-C3054_-CSL-29
24"/30"D x 54"W x 29"H



Cupboard Storage Right
STD-C2454_-CSR-29
STD-C3054_-CSR-29
24"/30"D x 54"W x 29"H

Note: Units are non-handed. Which side receives the storage or legs can be decided at installation or changed at users discretion.

SHELBY TEACHER DESK



2 Box/1 File
STD-C2460_-BBF-29
STD-C3060_-BBF-29
24"/30"D x 60"W x 29"H



2 File Drawers
STD-C2460_-FF-29
STD-C3060_-FF-29
24"/30"D x 60"W x 29"H



Toto Totes
STD-C2460_-TOT-29
STD-C3060_-TOT-29
24"/30"D x 60"W x 29"H



Open Storage
STD-C2460_-OS-29
STD-C3060_-OS-29
24"/30"D x 60"W x 29"H



Cupboard Storage Left
STD-C2460_-CSL-29
STD-C3060_-CSL-29
24"/30"D x 60"W x 29"H



Cupboard Storage Right
STD-C2460_-CSR-29
STD-C3060_-CSR-29
24"/30"D x 60"W x 29"H

Note: Units are non-handed. Which side receives the storage or legs can be decided at installation or changed at users discretion.

SHELBY TEACHER DESK



2 Box/1 File on both sides
STD-C2460_-BBF/BBF-29
STD-C3060_-BBF/BBF-29
24"/30"D x 60"W x 29"H



2 Box/1 File & 2 File
STD-C2460_-BBF/FF-29
STD-C3060_-BBF/FF-29
24"/30"D x 60"W x 29"H



2 Box/1 File & Toto Totes
STD-C2460_-BBF/TOT-29
STD-C3060_-BBF/TOT-29
24"/30"D x 60"W x 29"H



2 Box/1 File & Open Storage
STD-C2460_-BBF/OS-29
STD-C3060_-BBF/OS-29
24"/30"D x 60"W x 29"H



2 Box/1 File & Cupboard Storage Right
STD-C2460_-BBF/CSR-29
STD-C3060_-BBF/CSR-29
24"/30"D x 60"W x 29"H



2 Box/1 File & Cupboard Storage Left
STD-C2460_-BBF/CSL-29
STD-C3060_-BBF/CSL-29
24"/30"D x 60"W x 29"H



Cupboard Storage Right & Left
STD-C2460_-CSR/CSL-29
STD-C3060_-CSR/CSL-29
24"/30"D x 60"W x 29"H

SHELBY TEACHER DESK



2 Box/1 File
STD-C2466_-BBF/BBF-29
STD-C3066_-BBF/BBF-29
24"/30"D x 66"W x 29"H



2 File Drawers
STD-C2466_-BBF/FF-29
STD-C3066_-BBF/FF-29
24"/30"D x 66"W x 29"H



Toto Totes
STD-C2466_-BBF/TOT-29
STD-C3066_-BBF/TOT-29
24"/30"D x 66"W x 29"H



Open Storage
STD-C2466_-BBF/OS-29
STD-C3066_-BBF/OS-29
24"/30"D x 66"W x 29"H



Cupboard Storage Left
STD-C2466_-BBF/CSL-29
STD-C3066_-BBF/CSL-29
24"/30"D x 66"W x 29"H



Cupboard Storage Right
STD-C2466_-BBF/CSR-29
STD-C3066_-BBF/CSR-29
24"/30"D x 66"W x 29"H



Cupboard Storage Right
STD-C2466T-CSR/CSL-29
STD-C3066T-CSR/CSL-29
24"/30"D x 66"W x 29"H

Note: Units are non-handed. Which side receives the storage or legs can be decided at installation or changed at users discretion.

SHELBY TEACHER DESK

Shelby Teacher Desk Quick Guide

Base Styles	
2 Box Drawers/1 File Drawer	•
1 File/1 File Drawer	•
Toto Totes	•
Open Storage	•
Cupboard Storage Right	•
Cupboard Storage Left	•
2 Box Drawers/1 File Drawer Per Pedestal	•
2 Box Drawers/1 File Drawer + 2 File Drawers	•
2 Box Drawers/1 File Drawer + Toto Totes	•
2 Box Drawers/1 File Drawer + Open Storage	•
2 Box Drawers/1 File Drawer + Cupboard Storage Right	•
2 Box Drawers/1 File Drawer + Cupboard Storage Left	•
Cupboard Storage Right + Cupboard Storage Left	•
Work Surface	
Rectangular High Pressure Laminate	•
Features	
Grommets	•
Twin wheel locking casters	•
Powder Coated Steel Post Legs	•
Case Materials	
High Pressure Laminate	•
Thermally Fused Laminate	•
Options	
Pencil Drawer	•
Toto Totes	•

Features & Benefits:



- Multiple storage pedestal options
- Unit is non-handed and storage can be added to either or both sides of the desk
- Single pedestal units available configurations: 2 Box Drawers/1File Drawer, 1File/1File Drawer, Toto Totes, Open Storage, Cupboard Storage Right, Cupboard Storage Left
- Double pedestal units available configurations: 2 Box Drawers/1File Drawer per pedestal, 2 Box Drawers/1File Drawer + 2 File Drawers, 2 Box Drawers/1 File Drawer + Toto Totes, 2 Box Drawers/1 File Drawer + Open Storage, 2 Box Drawers/1 File Drawer + Cupboard Storage Right, 2 Box Drawers/1 File Drawer + Cupboard Storage Left
- Available with conference top option

Note: Pulls are P2 Black powder coat.

To Order Specify

High Pressure Laminate Thermally Fused Laminate: Choose from our selection of high pressure laminates or thermally fused laminates on our website. View our Finish & Color Guide for Color Match suggestions at <https://www.mediatechnologies.com/resources/downloads/guides>

PVC: Choose from our wide selection of PVCs. View our Finish & Color Guide for Color Match suggestions at <https://www.mediatechnologies.com/resources/downloads/guides>

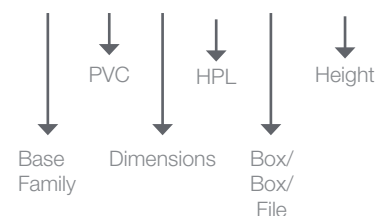
Group I Powder Coats: 809 Silver, 138 White, 109 Cream, 304 Dove Grey, 208 Putty, 407 Stone, 903 Black Wrinkle, 912 Black

Group II Powder Coats (up-charge): 808 Nickel, 405 Charcoal, 5003 Navy, MIR Mirrored Chrome, 621 Goldfinch, 622 Parakeet, 613 Blue Heron, 627 Blue Wren, 629 Hummingbird, 618 Purple Martin, 624 Cardinal, 623 Oriole

See **mediatechnologie's** finish choices at <https://www.mediatechnologies.com/resources/finishes>

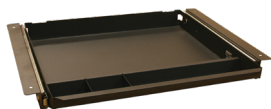
Model Number Breakdown:

STD-C2454L-BBF-29



Unit is non-handed so cabinets and drawers can be decided at install and changed at users discretion.

Options



Pencil Drawer
MCD1817



Toto Totes
TOT03 - 3" Totes
TOT06 - 6" Totes