

Modular Circulations Desks

General Specifications - Circulation Desks

Modular Case System: Each case module is fully assembled, allowing for simple field assembly of the complete circulation desk as well as for easy reconfiguration, if necessary. Cases connect with male/female threaded metal connectors.

Top: Tops are 1-1/4" thick, three ply engineered wood construction with .050" High pressure laminate, HPL, and a phenolic backer sheet. The patron side is edged with 5/16" x 1-1/4" solid red oak (with the exception on the Malibu and Keystone design have 1-5/8") with a 1/4" radius top and bottom. The edges and back side of the top are edged with 1/8" solid red oak.

Case Construction: Circulation desk modules are constructed of 3/4" thick, three ply particleboard with plain sliced "A" grade oak veneer. All modules, except Malibu style, utilize a continuous front design (sides do not penetrate), with a 4" High recessed toe. Cabinets are assembled using glue and dowel joinery. Note: One Terminating End Panel is required for each exposed end of a complete desk assembly.

Adjustable Shelves: Adjustable shelves are 3/4" thick three ply particleboard plywood with "A" grade oak veneer faces. The exposed edges are edged with 1/8" solid red oak. Shelves are adjustable on 32mm increments.

Drawers: Drawers are constructed of 1/2" nine ply baltic birch plywood. Drawers have 3/4" thick fronts with "A" grade oak veneer. Box drawers have 100 lb. full extension slides, file drawers have 100 lb. full extension slides.

Doors: Doors are constructed of 3/4" thick, three ply particleboard with plain sliced "A" grade oak veneer faces and edged on all sides with 1/8" solid red oak. Door hardware includes concealed hinges, fully adjustable in all 3 axes, and wire pulls.

Continuous Top Construction: Tops may be specified as continuous.

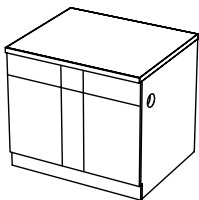
Locks: Units may be specified with doors and or drawers locking, keyed random or alike.

Design Lines: mediatechnologies® offers seven design lines of circulation desk modules, all using the general construction specifications above.

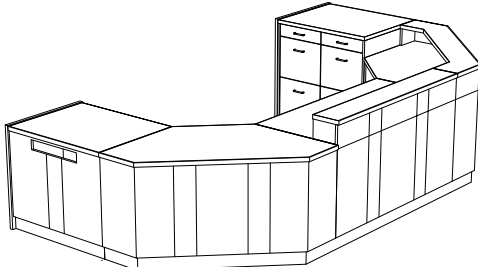
To specify a design line you must include a letter indicator: No letter indicator will specify our standard Bookmark design.

M-Metro **L**-Lexington **H**-Heritage **MB**-Malibu
CL-Charleston **KS**-Keystone

Please see below for design descriptions



Metro: a clean and stylish design line detailed with 1/8" deep x 1/8" wide grooves painted black applied to the patron side of most modular units. Model Number example for Metro Desk unit; MCD-M-36D-29



Desk Units				
36" Wide	Model Number	Description	Wgt.	List Price
	MCD-M-36D-29	Desk Unit, 36"W X 30"D X 29" H	116	\$2,567
	MCD-M-36D-32	Desk Unit, 36"W X 30"D X 32" H	122	\$2,567
	MCD-M-36D-39	Desk Unit, 36"W X 30"D X 39" H	137	\$2,718
	MCD-M-36D-32-ADJ	Desk Unit, 36"W X 30"D X ADJ. H	122	\$2,797
48" Wide	Model Number	Description	Wgt.	List Price
	MCD-M-48D-29	Desk Unit, 48"W X 30"D X 29" H	127	\$3,416
	MCD-M-48D-32	Desk Unit, 48"W X 30"D X 32" H	134	\$3,416
	MCD-M-48D-39	Desk Unit, 48"W X 30"D X 39" H	149	\$3,622
	MCD-M-48D-32-ADJ	Desk Unit, 48"W X 30"D X ADJ. H	134	\$3,724
72" Wide	Model Number	Description	Wgt.	List Price
	MCD-M-72D-29	Desk Unit, 72"W X 30"D X 29" H	201	\$5,214
	MCD-M-72D-32	Desk Unit, 72"W X 30"D X 32" H	208	\$5,214
	MCD-M-72D-39	Desk Unit, 72"W X 30"D X 39" H	226	\$5,233
	MCD-M-72D-32-ADJ	Desk Unit, 72"W X 30"D X ADJ. H	208	\$4,222
Book Return	Model Number	Description	Wgt.	List Price
	MCD-M-36BR-29	Book Return, 36"W X 30"D X 29" H	115	\$2,738
	MCD-M-36BR-32	Book Return, 36"W X 30"D X 32" H	121	\$2,738
	MCD-M-36BR-39	Book Return, 36"W X 30"D X 39" H	136	\$2,895
Descending Platform Book Truck	Model Number	Description	Wgt.	List Price
	MCD-DBT-1824-21	Depressible Platform Book Truck, 18"D x 24.25"W x 21"H, For curved 29"H Book Return Units and Nomad Book Return	135	\$3,107
	MCD-DBT-1824-24	Depressible Platform Book Truck, 18"D x 24.25"W x 24"H, For Curved 32"-39"H Book Return Units	135	\$3,107
	MCD-DBT-2424-21	Depressible Platform Book Truck, 23.625"D x 24.25"W x 21"H, For 29"H Book Return Units with Extended Chutes and 32"H Keystone and Malibu Book Returns	137	\$3,107
	MCD-DBT-2424-24	Depressible Platform Book Truck, 23.625"D x 24.25"W x 24"H, For 32" and #("H Book Return Units	137	\$3,107
Top Surface Slot Book Return Module with Drawer and Shelf Storage	Model Number	Description	Wgt.	List Price
	MCD-M-36SBR-TOP-29	Book Return w Top Slot, 36"W X 30"D X 29" H	198	\$3,908
	MCD-M-36SBR-TOP-32	Book Return w Top Slot, 36"W X 30"D X 32" H	201	\$3,908
	MCD-M-36SBR-TOP-39	Book Return w Top Slot, 36"W X 30"D X 39" H	215	\$3,941

Circulation Desks

Cupboard Units	Model Number	Description	Wgt.	List Price
	MCD-M-36CS-29	Cupboard Unit, 36"W X 30"D X 29" H	187	\$3,824
	MCD-M-36CS-32	Cupboard Unit, 36"W X 30"D X 32" H	190	\$3,824
	MCD-M-36CS-39	Cupboard Unit, 36"W X 30"D X 39" H	208	\$3,861

Cupboard Unit With Drawer	Model Number	Description	Wgt.	List Price
	MCD-M-36CD-29	Cupboard Unit, 36"W X 30"D X 29" H with drawer	199	\$4,375
	MCD-M-36CD-32	Cupboard Unit, 36"W X 30"D X 32" H with drawer	205	\$4,375
	MCD-M-36CD-39	Cupboard Unit, 36"W X 30"D X 39" H with drawer	223	\$4,413

Cupboard Unit With 2 & 3 Drawers (Cupboard Left)	Model Number	Description	Wgt.	List Price
	MCD-M-36C2DL-29	Cupboard Unit, Left, 36"W X 30"D X 29" H with 2 drawers, file/file	220	\$5,546
	MCD-M-36C2DL-32	Cupboard Unit, Left, 36"W X 30"D X 32" H with 2 drawers, file/file	223	\$5,546
	MCD-M-36C3DL-32	Cupboard Unit, Left, 36"W X 30"D X 32" H with 3 drawers, box/box/file	228	\$5,763
	MCD-M-36C3DL-39	Cupboard Unit, Left, 36"W X 30"D X 39" H with 3 drawers, box/file/file	254	\$5,811

Cupboard Unit With 2 & 3 Drawers (Cupboard Right)	Model Number	Description	Wgt.	List Price
	MCD-M-36C2DR-29	Cupboard Unit, Right, 36"W X 30"D X 29" H with 2 drawers, file/file	220	\$5,546
	MCD-M-36C2DR-32	Cupboard Unit, Right, 36"W X 30"D X 32" H with 2 drawers, file/file	223	\$5,546
	MCD-M-36C3DR-32	Cupboard Unit, Right, 36"W X 30"D X 32" H with 3 drawers, box/box/file	228	\$5,763
	MCD-M-36C3DR-39	Cupboard Unit, Right, 36"W X 30"D X 39" H with 3 drawers, box/file/file	254	\$5,811

Cupboard Unit With Open Storage (Cupboard Left)	Model Number	Description	Wgt.	List Price
	MCD-M-36COSL-29	Cupboard Unit, Left, 36"W X 30"D X 29" H with open storage	184	\$3,999
	MCD-M-36COSL-32	Cupboard Unit, Left, 36"W X 30"D X 32" H with open storage	188	\$3,999
	MCD-M-36COSL-39	Cupboard Unit, Left, 36"W X 30"D X 39" H with open storage	202	\$4,050

Cupboard Unit With Open Storage (Cupboard Right)	Model Number	Description	Wgt.	List Price
	MCD-M-36COSR-29	Cupboard Unit, Right, 36"W X 30"D X 29" H with open storage	184	\$3,999
	MCD-M-36COSR-32	Cupboard Unit, Right, 36"W X 30"D X 32" H with open storage	188	\$3,999
	MCD-M-36COSR-39	Cupboard Unit, Right, 36"W X 30"D X 39" H with open storage	202	\$4,050

Open Storage Units	Model Number	Description	Wgt.	List Price
	MCD-M-36OS-29	Open Storage, 36"W X 30"D X 29" H	183	\$3,098
	MCD-M-36OS-32	Open Storage, 36"W X 30"D X 32" H	186	\$3,098
	MCD-M-36OS-39	Open Storage, 36"W X 30"D X 39" H	200	\$3,122

Open Storage Unit With Drawer	Model Number	Description	Wgt.	List Price
	MCD-M-36OSD-29	Open Storage, 36"W X 30"D X 29" H with drawer	198	\$3,764
	MCD-M-36OSD-32	Open Storage, 36"W X 30"D X 32" H with drawer	201	\$3,764
	MCD-M-36OSD-39	Open Storage, 36"W X 30"D X 39" H with drawer	215	\$3,799

Open Storage Unit With 2 & 3 Drawers (Open Storage Left)	Model Number	Description	Wgt.	List Price
	MCD-M-360S2DL-29	Open Storage, Left, 36"W X 30"D X 29" H with 2 drawers, file/file	207	\$5,411
	MCD-M-360S2DL-32	Open Storage, Left, 36"W X 30"D X 32" H with 2 drawers, file/file	210	\$5,411
	MCD-M-360S3DL-32	Open Storage, Left, 36"W X 30"D X 32" H with 3 drawers, box/box/file	218	\$5,596
	MCD-M-360S3DL-39	Open Storage, Left, 36"W X 30"D X 39" H with 3 drawers, box/file/file	238	\$5,830

Open Storage Unit With 2 & 3 Drawers (Open Storage Right)	Model Number	Description	Wgt.	List Price
	MCD-M-360S2DR-29	Open Storage, Right, 36"W X 30"D X 29" H with 2 drawers, file/file	207	\$5,411
	MCD-M-360S2DR-32	Open Storage, Right, 36"W X 30"D X 32" H with 2 drawers, file/file	210	\$5,411
	MCD-M-360S3DR-32	Open Storage, Right, 36"W X 30"D X 32" H with 3 drawers, box/box/file	218	\$5,596
	MCD-M-360S3DR-39	Open Storage, Right, 36"W X 30"D X 39" H with 3 drawers, box/file/file	238	\$5,830

Kneespace Unit	Model Number	Description	Wgt.	List Price
	MCD-M-36KS-32	Kneespace Unit, 36"W X 30"D X 32" H	136	\$3,554
	MCD-M-36KS-39	Kneespace Unit, 36"W X 30"D X 39" H	149	\$3,583

Corner Units	Model Number	Description	Wgt.	List Price
45 Degree Radius	MCD-M-30RC45-29	Radius Corner, 30"W X 30"D X 29" H	74	\$3,398
	MCD-M-30RC45-32	Radius Corner, 30"W X 30"D X 32" H	77	\$3,398
	MCD-M-30RC45-39	Radius Corner, 30"W X 30"D X 39" H	84	\$3,727

45 Degree Flat	Model Number	Description	Wgt.	List Price
	MCD-M-30FC45-29	Flat Corner, 30"W X 30"D X 29" H	74	\$3,398
	MCD-M-30FC45-32	Flat Corner, 30"W X 30"D X 32" H	77	\$3,398
	MCD-M-30FC45-39	Flat Corner, 30"W X 30"D X 39" H	84	\$3,727

90 Degree Radius	Model Number	Description	Wgt.	List Price
	MCD-M-30RC-29	Radius Corner, 30"W X 30"D X 29" H	148	\$3,544
	MCD-M-30RC-32	Radius Corner, 30"W X 30"D X 32" H	153	\$3,544
	MCD-M-30RC-39	Radius Corner, 30"W X 30"D X 39" H	168	\$3,715

90 Degree Extended Radius	Model Number	Description	Wgt.	List Price
	MCD-M-30ERC-29	Radius Ext. Corner, 66"W X 34"D X 29" H	276	\$7,364
	MCD-M-30ERC-32	Radius Ext. Corner, 66"W X 34"D X 32" H	284	\$7,364
	MCD-M-30ERC-39	Radius Ext. Corner, 66"W X 34"D X 39" H	306	\$7,559

90 Degree Extended Flat	Model Number	Description	Wgt.	List Price
	MCD-M-30EFC-29	Flat Ext. Corner, 66"W X 30"D X 29" H	164	\$6,331
	MCD-M-30EFC-32	Flat Ext. Corner, 66"W X 30"D X 32" H	173	\$6,331
	MCD-M-30EFC-39	Flat Ext. Corner, 66"W X 30"D X 39" H	190	\$6,495

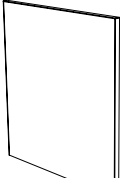
90 Degree Square	Model Number	Description	Wgt.	List Price
	MCD-M-30SC-29	Square Corner, 30"W X 30"D X 29"H	150	\$2,862
	MCD-M-30SC-32	Square Corner, 30"W X 30"D X 32"H	155	\$2,862
	MCD-M-30SC-39	Square Corner, 30"W X 30"D X 39"H	170	\$3,000

Triangle Corner Unit	Model Number	Description	Wgt.	List Price
	MCD-M-30TC-29	Triangle Corner, 30"W X 30"D X 29" H	87	\$2,862
	MCD-M-30TC-32	Triangle Corner, 30"W X 30"D X 32" H	89	\$2,862
	MCD-M-30TC-39	Triangle Corner, 30"W X 30"D X 39" H	97	\$3,005

* Note: For Triangle Corner Unit with Shelves, use Bookmark MCD-TCS units.

Circulation Desk End Panels

Note: One Terminating End Panel is required for each exposed end of a complete desk assembly. End Panels are available in all standard design lines. Terminating end panels are available to create right or left facing units. Right side and left side is determined from the perspective of the desk user.

Metro	Model Number	Description	Wgt.	Price
	MCD-M-29-EP-LH	Metro Finished Left End Panel for 29"H Unit	18	\$763
	MCD-M-29-EP-RH	Metro Finished Right End Panel for 29"H Unit	18	\$763
	MCD-M-32-EP-LH	Metro Finished Left End Panel for 32"H Unit	19	\$763
	MCD-M-32-EP-RH	Metro Finished Right End Panel for 32"H Unit	19	\$763
	MCD-M-39-EP-LH	Metro Finished Left End Panel for 39"H Unit	23	\$871
	MCD-M-39-EP-RH	Metro Finished Right End Panel for 39"H Unit	23	\$871

Set Up Charges and Upcharges for Non-Standard and Custom Finishes		
Model Number	Description	List Price
Non-Standard PVC	Upcharge, per color, per order, for non-standard PVC	\$911
Custom Finish	Upcharge for custom stain finish	\$640
Non-Standard Stain	Upcharge for non-standard stains already matched	\$283
Sprayon Finish	Upcharge, per color, per order, for Sprayon finish	\$329
Non-Standard HPL	Upcharge for nonstandard HPL (applies to Bella and Romak only)	\$690