

# Modular Circulations Desks

## General Specifications - Circulation Desks

**Modular Case System:** Each case module is fully assembled, allowing for simple field assembly of the complete circulation desk as well as for easy reconfiguration, if necessary. Cases connect with male/female threaded metal connectors.

**Top:** Tops are 1-1/4" thick, three ply engineered wood construction with .050" High pressure laminate, HPL, and a phenolic backer sheet. The patron side is edged with 5/16" x 1-1/4" solid red oak (with the exception on the Malibu and Keystone design have 1-5/8") with a 1/4" radius top and bottom. The edges and back side of the top are edged with 1/8" solid red oak.

**Case Construction:** Circulation desk modules are constructed of 3/4" thick, three ply particleboard with plain sliced "A" grade oak veneer. All modules, except Malibu style, utilize a continuous front design (sides do not penetrate), with a 4" High recessed toe. Cabinets are assembled using glue and dowel joinery. Note: One Terminating End Panel is required for each exposed end of a complete desk assembly.

**Adjustable Shelves:** Adjustable shelves are 3/4" thick three ply particleboard plywood with "A" grade oak veneer faces. The exposed edges are edged with 1/8" solid red oak. Shelves are adjustable on 32mm increments.

**Drawers:** Drawers are constructed of 1/2" nine ply baltic birch plywood. Drawers have 3/4" thick fronts with "A" grade oak veneer. Box drawers have 100 lb. full extension slides, file drawers have 100 lb. full extension slides.

**Doors:** Doors are constructed of 3/4" thick, three ply particleboard with plain sliced "A" grade oak veneer faces and edged on all sides with 1/8" solid red oak. Door hardware includes concealed hinges, fully adjustable in all 3 axes, and wire pulls.

**Continuous Top Construction:** Tops may be specified as continuous.

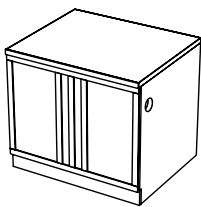
**Locks:** Units may be specified with doors and or drawers locking, keyed random or alike.

**Design Lines:** mediatechnologies® offers seven design lines of circulation desk modules, all using the general construction specifications above.

To specify a design line you must include a letter indicator: No letter indicator will specify our standard Bookmark design.

**M**-Metro      **L**-Lexington      **H**-Heritage      **MB**-Malibu  
**CL**-Charleston      **KS**-Keystone

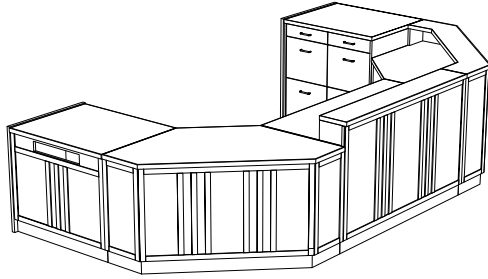
Please see below for design descriptions



**Heritage:** a mission style design line, also using solid oak details applied to the patron side of most modular units. Model Number example for Heritage Desk unit; MCD-H-36D-29

# Heritage

## Circulation Desks



Desk Units				
<b>36" Wide</b>	<b>Model Number</b>	<b>Description</b>	<b>Wgt.</b>	<b>List Price</b>
	MCD-H-36D-29	Desk Unit, 36"W X 30"D X 29" H	120	\$2,671
	MCD-H-36D-32	Desk Unit, 36"W X 30"D X 32" H	126	\$2,671
	MCD-H-36D-39	Desk Unit, 36"W X 30"D X 39" H	141	\$2,839
	MCD-H-36D-32-ADJ	Desk Unit, 36"W X 30"D X ADJ. H	126	\$2,908
<b>48" Wide</b>	<b>Model Number</b>	<b>Description</b>	<b>Wgt.</b>	<b>List Price</b>
	MCD-H-48D-29	Desk Unit, 48"W X 30"D X 29" H	131	\$3,560
	MCD-H-48D-32	Desk Unit, 48"W X 30"D X 32" H	138	\$3,560
	MCD-H-48D-39	Desk Unit, 48"W X 30"D X 39" H	153	\$3,779
	MCD-H-48D-32-ADJ	Desk Unit, 48"W X 30"D X ADJ. H	138	\$3,879
<b>72" Wide</b>	<b>Model Number</b>	<b>Description</b>	<b>Wgt.</b>	<b>List Price</b>
	MCD-H-72D-29	Desk Unit, 72"W X 30"D X 29" H	206	\$5,427
	MCD-H-72D-32	Desk Unit, 72"W X 30"D X 32" H	212	\$5,427
	MCD-H-72D-39	Desk Unit, 72"W X 30"D X 39" H	230	\$5,455
	MCD-H-72D-32-ADJ	Desk Unit, 72"W X 30"D X ADJ. H	212	\$5,915
<b>Book Return</b>	<b>Model Number</b>	<b>Description</b>	<b>Wgt.</b>	<b>List Price</b>
	MCD-H-36BR-29	Book Return, 36"W X 30"D X 29" H	118	\$2,861
	MCD-H-36BR-32	Book Return, 36"W X 30"D X 32" H	124	\$2,861
	MCD-H-36BR-39	Book Return, 36"W X 30"D X 39" H	139	\$3,035
<b>Descending Platform Book Truck</b>	<b>Model Number</b>	<b>Description</b>	<b>Wgt.</b>	<b>List Price</b>
	MCD-DBT-1824-21	Depressible Platform Book Truck, 18"D x 24.25"W x 21"H, For curved 29"H Book Return Units and Nomad Book Return	135	\$3,107
	MCD-DBT-1824-24	Depressible Platform Book Truck, 18"D x 24.25"W x 24"H, For Curved 32"-39"H Book Return Units	135	\$3,107
	MCD-DBT-2424-21	Depressible Platform Book Truck, 23.625"D x 24.25"W x 21"H, For 29"H Book Return Units with Extended Chutes and 32"H Keystone and Malibu Book Returns	137	\$3,107
	MCD-DBT-2424-24	Depressible Platform Book Truck, 23.625"D x 24.25"W x 24"H, For 32" and #("H Book Return Units	137	\$3,107
<b>Top Surface Slot Book Return Module with Drawer and Shelf Storage</b>	<b>Model Number</b>	<b>Description</b>	<b>Wgt.</b>	<b>List Price</b>
	MCD-H-36SBR-TOP-29	Book Return w Top Slot, 36"W X 30"D X 29" H	200	\$4,132
	MCD-H-36SBR-TOP-32	Book Return w Top Slot, 36"W X 30"D X 32" H	204	\$4,132
	MCD-H-36SBR-TOP-39	Book Return w Top Slot, 36"W X 30"D X 39" H	218	\$4,167

# Heritage

## Circulation Desks

Cupboard Units	Model Number	Description	Wgt.	List Price
	MCD-H-36CS-29	Cupboard Unit, 36"W X 30"D X 29" H	189	\$4,053
	MCD-H-36CS-32	Cupboard Unit, 36"W X 30"D X 32" H	192	\$4,053
	MCD-H-36CS-39	Cupboard Unit, 36"W X 30"D X 39" H	210	\$4,097

Cupboard Unit With Drawer	Model Number	Description	Wgt.	List Price
	MCD-H-36CD-29	Cupboard Unit, 36"W X 30"D X 29" H with drawer	201	\$4,661
	MCD-H-36CD-32	Cupboard Unit, 36"W X 30"D X 32" H with drawer	207	\$4,661
	MCD-H-36CD-39	Cupboard Unit, 36"W X 30"D X 39" H with drawer	225	\$4,700

Cupboard Unit With 2 & 3 Drawers (Cupboard Left)	Model Number	Description	Wgt.	List Price
	MCD-H-36C2DL-29	Cupboard Unit, Left, 36"W X 30"D X 29" H with 2 drawers, file/file	222	\$5,963
	MCD-H-36C2DL-32	Cupboard Unit, Left, 36"W X 30"D X 32" H with 2 drawers, file/file	225	\$5,963
	MCD-H-36C3DL-32	Cupboard Unit, Left, 36"W X 30"D X 32" H with 3 drawers, box/box/file	230	\$6,185
	MCD-H-36C3DL-39	Cupboard Unit, Left, 36"W X 30"D X 39" H with 3 drawers, box/file/file	256	\$6,244

Cupboard Unit With 2 & 3 Drawers (Cupboard Right)	Model Number	Description	Wgt.	List Price
	MCD-H-36C2DR-29	Cupboard Unit, Right, 36"W X 30"D X 29" H with 2 drawers, file/file	222	\$5,963
	MCD-H-36C2DR-32	Cupboard Unit, Right, 36"W X 30"D X 32" H with 2 drawers, file/file	225	\$5,963
	MCD-H-36C3DR-32	Cupboard Unit, Right, 36"W X 30"D X 32" H with 3 drawers, box/box/file	230	\$6,185
	MCD-H-36C3DR-39	Cupboard Unit, Right, 36"W X 30"D X 39" H with 3 drawers, box/file/file	256	\$6,244

Cupboard Unit With Open Storage (Cupboard Left)	Model Number	Description	Wgt.	List Price
	MCD-H-36COSL-29	Cupboard Unit, Left, 36"W X 30"D X 29" H with open storage	186	\$4,244
	MCD-H-36COSL-32	Cupboard Unit, Left, 36"W X 30"D X 32" H with open storage	190	\$4,244
	MCD-H-36COSL-39	Cupboard Unit, Left, 36"W X 30"D X 39" H with open storage	204	\$4,304

Cupboard Unit With Open Storage (Cupboard Right)	Model Number	Description	Wgt.	List Price
	MCD-H-36COSR-29	Cupboard Unit, Right, 36"W X 30"D X 29" H with open storage	186	\$4,244
	MCD-H-36COSR-32	Cupboard Unit, Right, 36"W X 30"D X 32" H with open storage	190	\$4,244
	MCD-H-36COSR-39	Cupboard Unit, Right, 36"W X 30"D X 39" H with open storage	204	\$4,304

Open Storage Units	Model Number	Description	Wgt.	List Price
	MCD-H-36OS-29	Open Storage, 36"W X 30"D X 29" H	185	\$3,253
	MCD-H-36OS-32	Open Storage, 36"W X 30"D X 32" H	189	\$3,253
	MCD-H-36OS-39	Open Storage, 36"W X 30"D X 39" H	202	\$3,279

\* Note: For Triangle Corner Unit with Shelves, use Bookmark MCD-TCS units.

Prices and specifications subject to change without notice

P-HERITAGECIRCDKESKS-240114

# Heritage

## Circulation Desks

Open Storage Unit With Drawer	Model Number	Description	Wgt.	List Price
	MCD-H-360SD-29	Open Storage, 36"W X 30"D X 29" H with drawer	200	\$3,990
	MCD-H-360SD-32	Open Storage, 36"W X 30"D X 32" H with drawer	204	\$3,990
	MCD-H-360SD-39	Open Storage, 36"W X 30"D X 39" H with drawer	218	\$4,027

Open Storage Unit With 2 & 3 Drawers (Open Storage Left)	Model Number	Description	Wgt.	List Price
	MCD-H-360S2DL-29	Open Storage, Left, 36"W X 30"D X 29" H with 2 drawers, file/file	209	\$5,781
	MCD-H-360S2DL-32	Open Storage, Left, 36"W X 30"D X 32" H with 2 drawers, file/file	212	\$5,781
	MCD-H-360S3DL-32	Open Storage, Left, 36"W X 30"D X 32" H with 3 drawers, box/box/file	220	\$5,999
	MCD-H-360S3DL-39	Open Storage, Left, 36"W X 30"D X 39" H with 3 drawers, box/file/file	240	\$6,261

Open Storage Unit With 2 & 3 Drawers (Open Storage Right)	Model Number	Description	Wgt.	List Price
	MCD-H-360S2DR-29	Open Storage, Right, 36"W X 30"D X 29" H with 2 drawers, file/file	209	\$5,781
	MCD-H-360S2DR-32	Open Storage, Right, 36"W X 30"D X 32" H with 2 drawers, file/file	212	\$5,781
	MCD-H-360S3DR-32	Open Storage, Right, 36"W X 30"D X 32" H with 3 drawers, box/box/file	220	\$5,999
	MCD-H-360S3DR-39	Open Storage, Right, 36"W X 30"D X 39" H with 3 drawers, box/file/file	240	\$6,261

Kneespace Unit	Model Number	Description	Wgt.	List Price
	MCD-H-36KS-32	Kneespace Unit, 36"W X 30"D X 32" H	138	\$3,756
	MCD-H-36KS-39	Kneespace Unit, 36"W X 30"D X 39" H	151	\$3,789

Corner Units	Model Number	Description	Wgt.	List Price
45 Degree Flat	MCD-H-30FC45-29	Flat Corner, 30"W X 30"D X 29" H	74	\$3,499
	MCD-H-30FC45-32	Flat Corner, 30"W X 30"D X 32" H	77	\$3,499
	MCD-H-30FC45-39	Flat Corner, 30"W X 30"D X 39" H	84	\$3,838

90 Degree Extended Flat	Model Number	Description	Wgt.	List Price
	MCD-H-30EFC-29	Flat Ext. Corner, 66"W X 30"D X 29" H	168	\$6,454
	MCD-H-30EFC-32	Flat Ext. Corner, 66"W X 30"D X 32" H	177	\$6,454
	MCD-H-30EFC-39	Flat Ext. Corner, 66"W X 30"D X 39" H	190	\$6,639

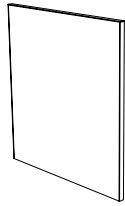
90 Degree Square	Model Number	Description	Wgt.	List Price
	MCD-H-30SC-29	Square Corner, 30"W X 30"D X 29" H	152	\$4,148
	MCD-H-30SC-32	Square Corner, 30"W X 30"D X 32" H	155	\$4,148
	MCD-H-30SC-39	Square Corner, 30"W X 30"D X 39" H	170	\$4,173

Triangle Corner Unit	Model Number	Description	Wgt.	List Price
	MCD-H-30TC-29	Triangle Corner, 30"W X 30"D X 29" H	88	\$3,265
	MCD-H-30TC-32	Triangle Corner, 30"W X 30"D X 32" H	91	\$3,265
	MCD-H-30TC-39	Triangle Corner, 30"W X 30"D X 39" H	98	\$3,437

\* Note: For Triangle Corner Unit with Shelves, use Bookmark MCD-TCS units.

# Circulation Desk End Panels

Note: One Terminating End Panel is required for each exposed end of a complete desk assembly. End Panels are available in all standard design lines. Terminating end panels are available to create right or left facing units. Right side and left side is determined from the perspective of the desk user.



Heritage	Model Number	Description	Wgt.	Price
	MCD-H-29EP-LH	Heritage Finished Left End Panel for 29"H Unit	19	\$763
	MCD-H-29EP-RH	Heritage Finished Right End Panel for 29"H Unit	19	\$763
	MCD-H-32EP-LH	Heritage Finished Left End Panel for 32"H Unit	20	\$763
	MCD-H-32EP-RH	Heritage Finished Right End Panel for 32"H Unit	20	\$763
	MCD-H-39EP-LH	Heritage Finished Left End Panel for 39"H Unit	24	\$871
	MCD-H-39EP-RH	Heritage Finished Right End Panel for 39"H Unit	24	\$871

# Transactions Tops

Transaction Tops				List Price
	MCD-H-36-TRX	Heritage Transaction Top 36"W X 7"H	19	\$738
	MCD-H-72-TRX	Heritage Transaction Top 72"W X 7"H	33	\$1,411
	MCD-H-30SC-TRX	Heritage Transaction Top Square Unit 9"D X 7"H	19	\$1,760
	MCD-H-30EFC-TRX	Heritage Transaction Top Extended Flat 9"D X 7"H	30	\$2,045

Set Up Charges and Upcharges for Non-Standard and Custom Finishes		
Model Number	Description	List Price
Non-Standard PVC	Upcharge, per color, per order, for non-standard PVC	\$911
Custom Finish	Upcharge for custom stain finish	\$640
Non-Standard Stain	Upcharge for non-standard stains already matched	\$283
Sprayon Finish	Upcharge, per color, per order, for Sprayon finish	\$329
Non-Standard HPL	Upcharge for nonstandard HPL (applies to Bella and Romak only)	\$690